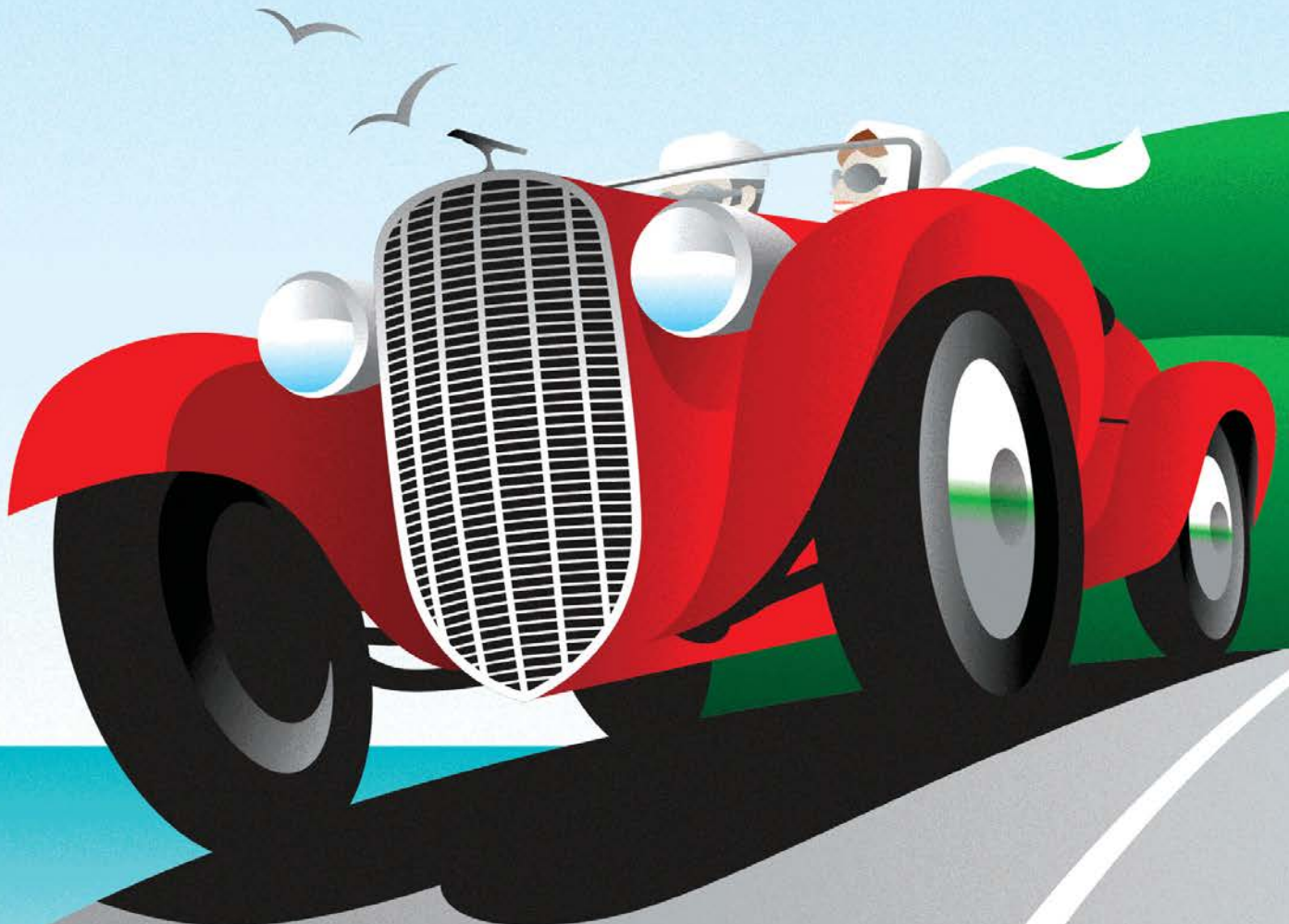


BAY to BIRDWOOD

*Sunday 22 October
National Motor Museum*

baytobirdwood.com.au



OFFICIAL PROGRAM



BAY to BIRDWOOD

The Bay to Birdwood starts at West Beach, on the lands of the Kurna Nation, and concludes in Birdwood, on the lands of the Peramangk Country. We pay our respects to Kurna and Peramangk elders past, present and emerging and acknowledge their ongoing custodianship of these lands.



The History Trust of South Australia acknowledges the First Nations Peoples of South Australia, whose living cultures and connection to Country began in time immemorial and continue into the present. We affirm our commitment to the truth telling called for in the Uluru Statement from the Heart as a necessary contribution to reconciliation. Artwork by Elizabeth Close.

PROGRAM

SUNDAY 22 OCTOBER 2023

THE START - BARRATT RESERVE, WEST BEACH

- 6:00 am Gates open at Barratt Reserve, West Beach Parks
Breakfast and coffee available until 10.30am
- 7:00 am Announcements commence
- 7:30 am Welcome to Country and Smoking Ceremony
- 7:45 am Vehicle departure begins

THE ALTERNATIVE START - CIVIC PARK, MODBURY

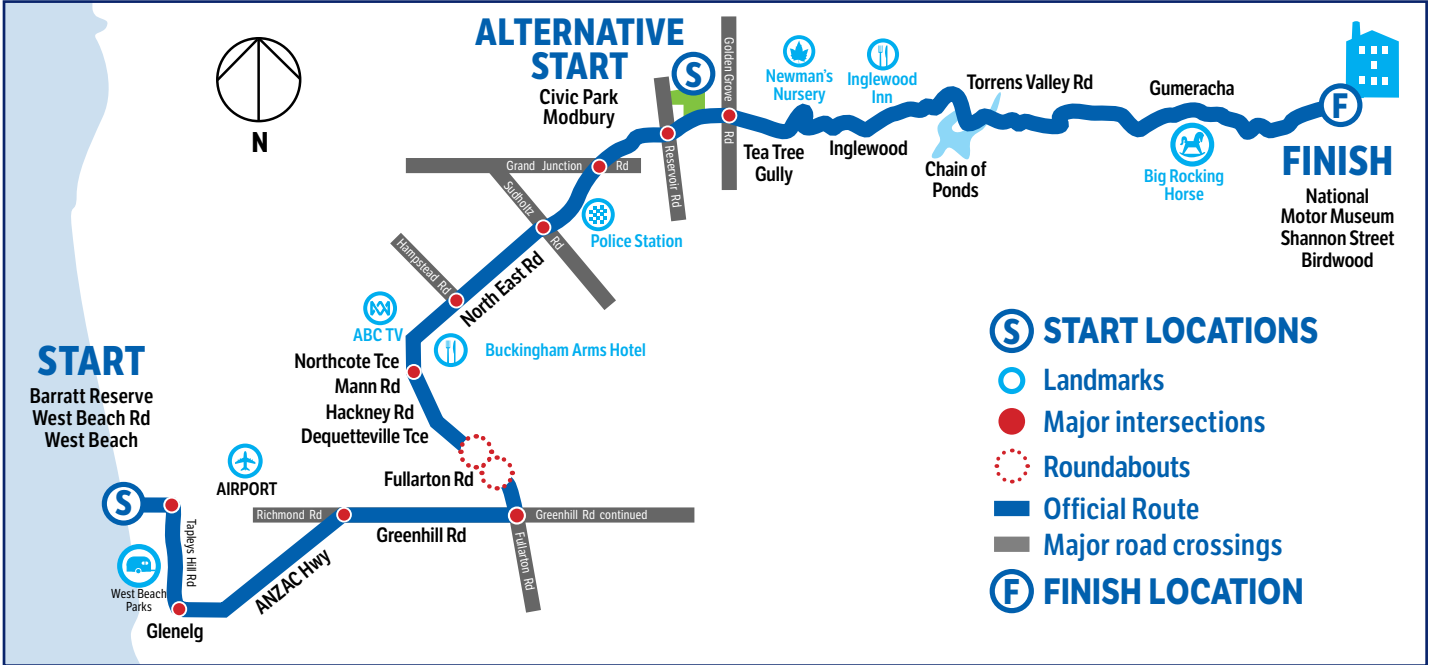
- 7:00 am Gates open at Civic Park, Modbury
Breakfast and coffee available
- 8:30 am First vehicles leave

THE FINISH - NATIONAL MOTOR MUSEUM, BIRDWOOD

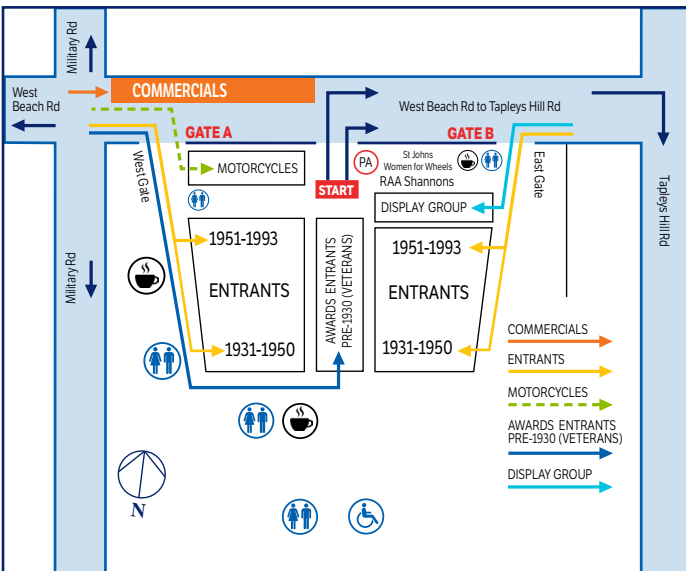
- 9:30 am First vehicles arrive at National Motor Museum
- 10:00 am National Motor Museum gates open
Retro music by DJ Driller and roaming music
by Atlantic Street Band
- 12:30 pm Welcome and acknowledgments
- 12:45 pm Welcome to Country and Smoking Ceremony
- 1:00 pm Fashions on the Field competition
- 2:00 pm Announcement of award winners and presentation of trophies
- 5:00 pm National Motor Museum gates and grounds close



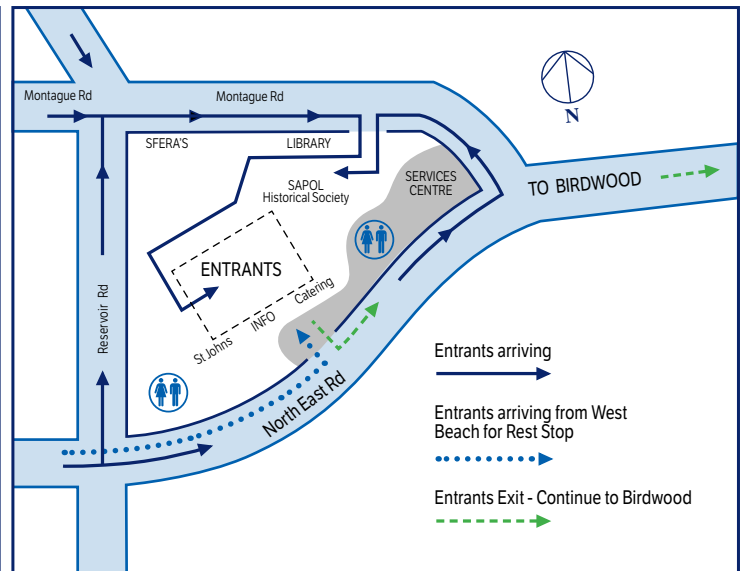
OFFICIAL ROUTE



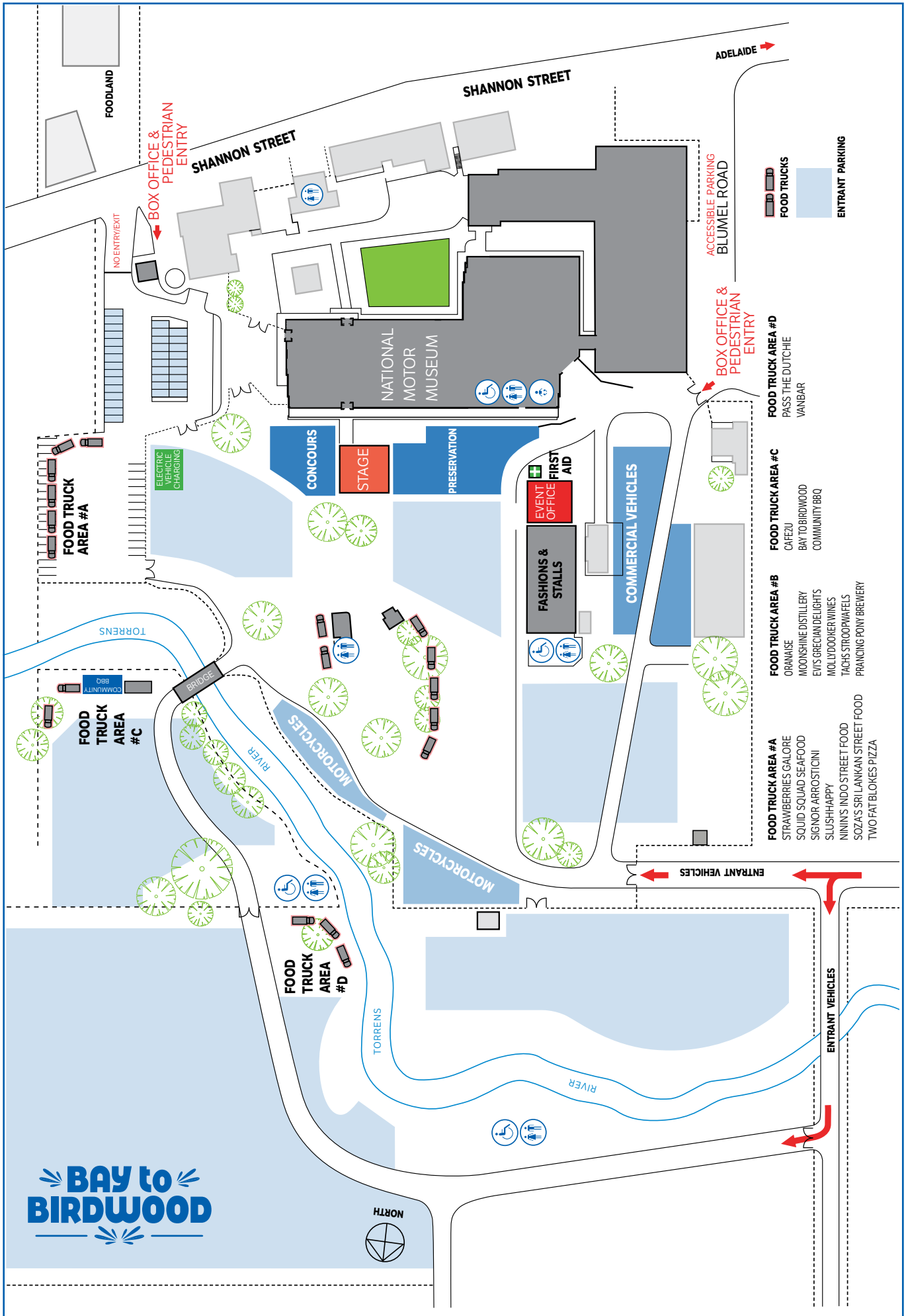
THE START MAP



THE ALTERNATIVE START



FINISH FESTIVAL





GOVERNOR OF SOUTH AUSTRALIA

**Her Excellency The Honourable Frances
Adamson AC**
Governor of South Australia

A message from Her Excellency The Honourable Frances Adamson AC, Governor of South Australia

Each year the Bay to Birdwood brings delight to thousands as they line the route from Glenelg into the Hills to watch the cavalcade of vintage and classic cars.

Rod and I, as Joint Patrons of the Bay to Birdwood, are looking forward to being part of this wonderful day.

Spectators are enthralled by these vehicular treasures, the result of many hours spent polishing and buffing, and of tireless effort of keeping them in working order.

As well as enjoying the spectacle, I am particularly looking forward to presenting the trophies for the Concours d'Elegance Awards.

In doing so, I will be following proudly in the footsteps of my mother, the Hon Jennifer Cashmore AM, who, as Minister for Tourism, made the presentation at the inaugural Bay to Birdwood in 1980.

A much-anticipated event on the South Australian tourism calendar, the Bay to Birdwood brings many visitors from interstate and overseas to enjoy our city, the beautiful Adelaide Hills and, at the finishing line, the remarkable National Motor Museum - the home, incidentally, of the former Vice Regal Rolls Royce.

The event has earned national recognition as Australia's premier historic motoring event; and it is fitting that it should take place in South Australia, as the state with the highest per-capita rate of ownership of historic vehicles in the nation!

Congratulations to the owners of these historic vehicles and the organisers of the Bay to Birdwood, for bringing great joy to car enthusiasts and many others.

Start your engines!

Her Excellency The Honourable Frances Adamson AC
Governor of South Australia





PREMIER OF SOUTH AUSTRALIA

Peter Malinauskas
Premier

A message from the Premier of South Australia

It's a great pleasure to celebrate our iconic Bay to Birdwood: a beloved South Australian tradition, and a cherished event for motoring enthusiasts from all across Australia.

A parade of classic and historic vehicles will travel a winding 67-kilometre course from the coast at West Beach through to the National Motor Museum in the Adelaide Hills, with over 90,000 spectators cheering them on along the route.

It's a celebration of motoring history, with over 1500 lovingly restored and maintained vehicles expected to take part this year, dating from the beginning of the 20th century through to 1993 - many adding to the spectacle by dressing in vehicle-appropriate period costumes.

These vehicles represent a labour of love by thousands of dedicated enthusiasts, and the Bay to Birdwood is a chance for all of us to share in their passion.

Thank you to all at the History Trust of South Australia's National Motor Museum, who have been hosting the Bay to Birdwood and its supporting events ever since the very first Run back in 1980.

It's another reminder that South Australia truly is the Motorsport State, having seen the return of the VAILO Adelaide 500, the Adelaide Motorsport Festival, and dedicated grant programs to support local car clubs - including those that preserve these classic and historic vehicles that are the Bay to Birdwood's true stars.

Whether you're driving your beloved classic vehicle, enjoying the celebrations at the Finish Festival in Birdwood, or waving the drivers on along the route, I hope you take the opportunity to be a part of this uniquely South Australian experience.

See you on the road!

Peter Malinauskas
Premier





MINISTER FOR EDUCATION, TRAINING AND SKILLS

Hon Blair Boyer MP

Minister for Education, Training and Skills

A message from Hon Blair Boyer MP, Minister for Education, Training and Skills

I am thrilled to be celebrating the upcoming Bay to Birdwood, not only as a participant, but as the Minister responsible for the History Trust of South Australia. This year, I'll be joining in on the fun, as I drive a restored 1926 Chrysler 60 vehicle. My three young daughters are excited to be joining me for the ride!

The Bay to Birdwood has been an important fixture in the South Australian events calendar for more than 40 years. It not only showcases incredible car collections but is also a chance to celebrate the wonderful joy of vehicle restoration and collection. It's also a chance to take part in an event that has a huge amount of cultural significance to our state.

We are rightly proud of our car manufacturing history and the Bay to Birdwood is an opportunity to celebrate it.

For the second year now, EV-converted historic vehicles will also take part in the Bay to Birdwood. A brand-new trophy for this award category has been commissioned by the History Trust of South Australia and produced by local artisans at Adelaide's JamFactory.

My congratulations to each of the participants in the Bay to Birdwood, for your dedication and commitment to preserving the history of Australian motoring culture.

A big thank you to the History Trust of South Australia for your care and stewardship of this iconic event, attracting participants from all over Australia.
Enjoy this very special day.

Hon Blair Boyer MP
Minister for Education, Training and Skills





CHAIR BAY TO BIRDWOOD

Micheal Neale

Chair, Bay to Birdwood
Trustee, History Trust of South Australia

A message from Michael Neale, Chair, Bay to Birdwood

Welcome to the 2023 Bay to Birdwood, one of the world's great historic motoring events.

The event last year was quite exceptional. The awards judging, which now occurs on the Saturday, moved from the Torrens Parade Ground to its glamorous new location in the heart of the Adelaide Cultural Institution precinct, the Migration Museum courtyard and the lawns behind the South Australian Museum. Beautiful vehicles in a beautiful location in the very heart of the City of Adelaide. I spoke to hundreds of people last year, motoring enthusiasts, journalists, families just having a look and visitors from overseas who had come specifically for the event.

On the Sunday last year we celebrated the first event since COVID unrestricted by pandemic social distancing rules. Thousands of people congregated at Barratt Reserve in West Beach for the start. A crowd estimated at around 90,000 lined the route, several rows deep in the favourite spots on ANZAC Highway, Greenhill Road, Fullarton Road, Civic Park Tea Tree Gully and the Gumeracha high street. My visitors were stunned at the size of the crowd, even spectator BBQ parties in the driveways of hills properties along the way. We were able to enjoy a full Finish Festival at the National Motor Museum in Birdwood, the likes we hadn't seen since 2019.

In 2022 we retired the old trophies for the Concours d'Elegance, with two new trophies launched - one for pre 1950s vehicles and another for vehicles built in 1950 or later. Both of the trophies were stunningly beautiful and rich in symbolic meaning, designed by artists from Adelaide's famous craft and design studio, JamFactory. We also introduced an award category for EV Conversions of historic vehicles, taking an international leadership position in this important practice emerging around the world.

It was quite an exceptional year, but for me, one thing made the event more exceptional than ever before.

This was the first year in which we had entries from every decade of the 20th century, all on display at the Finish Festival. I can remember looking out over the assembled vehicles with people dressed in period-appropriate costumes for their vehicles. I can remember seeing a 1904 De Dion-Bouton, a 1991 Honda and vehicles from every decade in-between, all having made the ascent from the city. Looking out over the field, I saw a glimpse of the entire history of motoring. It was a solitary moment of elation - a quiet time in my busy life when I could feel as though I was involved in something unique and timeless. I know I will feel the same again this year. I hope you all do too. It is a gift. It is the Bay to Birdwood.

Michael Neale
Chair, Bay to Birdwood



FASHIONS ON THE FIELD



The Bay to Birdwood is a historic motoring event, but it is fashion that truly steals the show. Participants are encouraged to dress in outfits that represent the style trends of the early 1900's all the way through to 1993. Like machinery, fashion has evolved considerably over the past 120 years and each unique outfit offers an insight to the broader social and cultural contexts of each period. What we wear tells a story.

These individual stories are unmissable along the 67 kilometre run from West Beach to Birdwood, where hundreds of costumed participants wind back the clock and transform public roads into a rolling exhibition of authentic period style.

In addition to this larger ethos, there are two distinctive fashion segments at the 2023 Bay to Birdwood.

Concours d'Elegance

The Bay to Birdwood Concours d'Elegance Award is judged not only on the presentation of each vehicle, but also that of the driver and their passengers. Entrants who assemble outfits that most accurately represent the era and style of their vehicle are granted the highest number of possible points. The entrant with the highest combined vehicle and occupant score will be presented with the prestigious trophy at the end of the day.

Fashions on the Field Competition

The Fashions on the Field competition has become a major component of the Bay to Birdwood Finish Festival. The event is a chance for participants to have their outfit formally celebrated and compete for wonderful prizes.

This year, we will revel in fashion and trends from bygone eras, from top hats to acid wash, go-go boots to shoulder pads, and everything in between. Entrants from previous years have taken inspiration from wartime uniforms, Mod & Rocker subcultures, the Roaring Twenties, Disco Fever, Hollywood Glamour and much more.

THERE ARE THREE AWARD CATEGORIES:

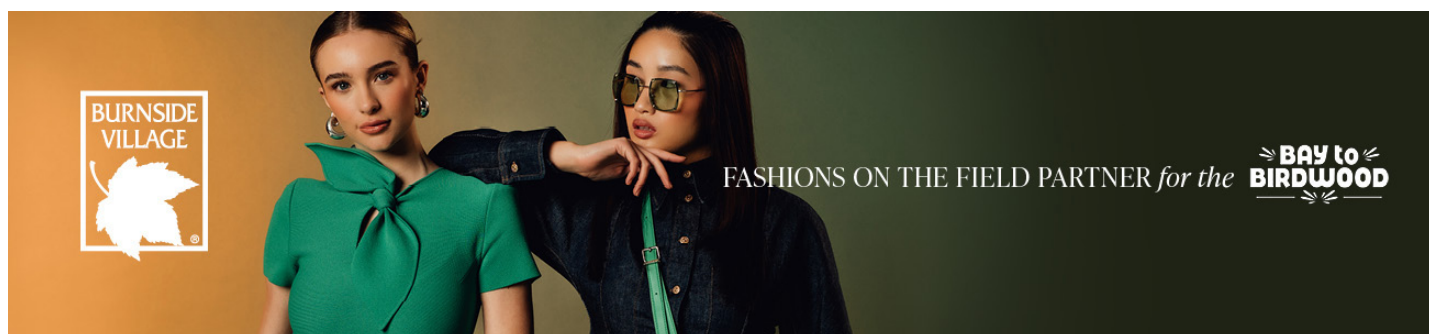
- ✓ **Best Female Fashion**
- ✓ **Best Male Fashion**
- ✓ **Best Group Fashion**

The Best Female Fashion and Best Male Fashion categories are open to anyone, irrespective of gender or identification. They are intended to frame historical conditions of dress and match the thematic tone of the event. Register for whatever competition you feel most comfortable in.

Entrants are judged on their accuracy, style and presentation, but above all, entrants are encouraged to have fun and be creative.

Register as an entrant at our Fashions on the Field tent or simply join the audience to show your support.

Watch fashion history come to life.



The 2023 Fashions on the Field competition is kindly supported by Burnside Village.

AWARDS

THE PURSUIT OF EXCELLENCE

One of the Bay to Birdwood's most important features is the judging and presentation of the awards, including the Concours d'Elegance, the Preservation and the EV Conversion Awards.

The Concours d'Elegance Award is the most prestigious award presented at the Bay to Birdwood. It follows the original Concours d'Elegance format in that the overall appearance of the vehicle and passengers is judged. The vehicles are assessed on a number of criteria including paint, engine bay, interior, and overall effect. The dress of the entrants is judged according to how closely their appearance is associated with the era of their vehicle.

Introduced in 2016, the Preservation Award is a category for vehicles that have not been restored or modified, but still present in excellent original condition. The interest in untouched and largely preserved vehicles has been growing within the historic motor vehicle movement for many years. Since 2020, there have been two Concours d'Elegance Awards and two Preservation Awards, presented to the categories of Pre-1950 Vehicles and the Post-1950 Vehicles.

In a world-first, and in alignment with a shift within historic vehicle circles, the Bay to Birdwood welcomed electric converted historic vehicles in 2022 and will do so again in 2023. The Bay to Birdwood has always welcomed vehicles modified to run on alternative fuel sources, including liquefied petroleum gases. This new category is standalone with unique conditions.

The Bay to Birdwood would like to express the gratitude to our judges who are recognised experts in the field of motoring and generously volunteer their time at the Awards, especially to Lucinda Osborne, Director of Judges and member of the Bay to Birdwood Advisory Committee.

Director of Judges

Lucinda Osborne

Costume Judges

Anna Vlach

Sandra Murrell

Judges Assistant

Shirley Tonkin

Vehicle Judges

Carmine Carofano

Jon Chittleborough

Ben Finnis

Simon Fitzpatrick

Gary Hubbard

Larry Kavanagh

Peter Koszewski

Daryl Meek

Paul Murrell

Paul Oliver

Bruce Tonkin

Roger Trethewey

Nigel Ridgway

Eric Rodda



PREVIOUS WINNERS

1980	Stephen, Christina, Gabriella & Elizabeth Boros 1930 Model A Ford
1982	Terry Parker 1908 Matchless Motorcycle & Sidecar
1984	Donald & Elsa Cuppleditch 1913 Empire Runabout
1986	Colin Davis 1909 Renault Roadster
1988	J M Verco 1912 Ford T Runabout J M Ellis 1928 Packard Limousine
1990	J M Ellis 1928 Packard Tourer
1992	C & J Sorgensen 1904 De Dion (Tonneau)
1994	R & H Forss 1928 Talbot AF 14/45 Coupe
1996	Allan & Judy Steele 1924 Rugby Tourer
1997	L P Khabbaz 1965 Ford XP Coupe
1998	Donald & Elsa Cuppleditch 1913 Empire Runabout
1999	David Major 1954 Aston Martin - DB2/4 Coupe
2000	Don & Marg Evans 1948 Jaguar Mk V
2001	Graham Juttner Jaguar Mk II Sedan
2002	C & E Minge 1924 Nash Hearse
2003	Mick Mitolo 1955 MG TF Roadster
2004	Peter Whelan 1929 Packard Limousine
2005	Lyell & Julie Blackman 1956 MG A Roadster
2006	John & Robyn Whittaker 1952 Mercedes Benz 220
2007	Greg Meyers 1971 MV Augusta 125 GTLS Motorcycle
2008	David Lean 1941 BMW R12 Motorcycle Outfit
2009	Leon Parbs 1969 Ford Capri
2010	Neil & Gaynor Francis 1914 Napier T68 Tourer
2011	Peter & Lynda Ninnis 1958 Ford Fairlane 500 Skyliner
2012	Jason Edwards 1955 MG TF

2013	Anthony Perre 1967 Chevrolet Chevelle
2014	John Whittaker & Robyn Whittaker 1953 Mercedes Benz 330S
2015	Mark Kraulis 1956 Chevrolet Bel-Air Coupe
2016	- CONCOURS d'ELEGANCE Ryan & Kirsty Turner 1926 Pontiac 6-27
2016	- PRESERVATION Natalie Halstead 1949 Sunbeam S7
2017	- CONCOURS d'ELEGANCE Paul Mason 1968 Holden HK Monaro
2017	- PRESERVATION Paul Aikman 1966 Pontiac Bonneville
2018	- CONCOURS d'ELEGANCE Stan Livissianos 1959 Chrysler Imperial Crown Convertible
2018	- PRESERVATION Elizabeth Murphy 1935 Chrysler Plymouth
2019	- CONCOURS d'ELEGANCE Alvin Chua 1957 BMW Isetta 300
2019	- PRESERVATION John McConville 1973 Mercedes Benz 280E
2020	- CONCOURS d'ELEGANCE vehicles built prior to 1950 Geoff Mitton 1904 De Dion-Bouton V Rear Entrance Tonneau
2020	- PRESERVATION vehicles built prior to 1950 Ian Oates 1912 Ford Model T Tourer
2020	- CONCOURS d'ELEGANCE vehicles built from 1950 Peter Cadzow 1968 Ford XT GT Falcon Sedan
2020	- PRESERVATION vehicles built from 1950 Ryan Piekarski 1969 Holden HT Monaro
2022	- CONCOURS D'ELEGANCE vehicles built prior to 1950 Michael Ferguson 1932 Chevrolet BA Confederate Moonlight Speedster
2022	- PRESERVATION vehicles built prior to 1950 Michael Keogh 1935 Albion
2022	- CONCOURS D'ELEGANCE vehicles built from 1950 Simon Harrison 1966 Ford Cortina Mk 1
2022	- PRESERVATION vehicles built from 1950 John Johnson 1987 Volvo 780

*Prior to 2016 the Concours d'Elegance was the only award

* No awards were presented in 2021 due to Covid-19

AWARD ENTRANTS

Award	Entry	First Name	Last Name	Year	Make	Model	Body Style	Registration	Club	
Concours d'Elegance Pre-1950s	1188	Colin	Behn	1920	Harley Davidson	W	M/C Solo	YYA389	VVMCCSA	
	1271	Roger	Boehm	1926	Rugby	R	Sedan	S703BDG	AHR	
	0707	Mark	Randell	1929	Morris	MC1428	Tourer	DD812S	AHMRC	
	0652	Malcolm	Adamson	1936	SS Jaguar	Airline	Saloon	9114	JDCSA	
	1052	Kerrie	White	1937	Lincoln	Zephyr	Coupe	22Y23		
	1327	Russell	Vine	1940	Austin	Eight	Sedan	AU1940	NMVM	
	0908	Cosmo	Monterososso	1949	Holden	48-215 FX	Sedan	149	48-FJHCSA	
Concours d'Elegance Post 1950s	0617	Tim	Harper	1950	Bentley	Mk VI Special	Tourer - Drop-head	220060	BDCSA	
	0372	Mick	Monterososso	1953	Holden	FX	Sedan	RFX853	48-FJHCSA	
	1085	David	Jarrett	1956	Ford	Thunderbird	Coupe	TBD000	SCC	
	1216	Graham	Nuske	1961	Volkswagen	Kombi	Pickup	S295CBX	SAMC	
	0667	Lew	Toop	1963	Holden	EJ Premier	Sedan	269445	SCC	
	0100	Volker	Stroeher	1964	Volkswagen	Karmann Ghia	Coupe	S426CRW		
	0618	Tim	Harper	1964	Bentley	S3	Saloon	2375	BDCSA	
	1058	Peter	Ninnis	1965	Ford	XP Falcon Squire	Station Wagon	0465H1	SHVCVC	
	0788	David	Fuller	1967	Holden	HR	Sedan	GMH1967	MCCSA	
	0354	Dino	Pietrobon	1968	Plymouth	Road Runner	Coupe	RRJ426	CMCC	
	0036	Sean	Basford	1969	BMW	2002	Coupe	BMW069	BMWOCSA	
	1326	Ian	Burnett	1971	Triumph	TR6	Sports	XF548	SCC	
	0159	Corey	Armstrong	1973	Mazda	Capella RE	Sedan	RLF546	SDCC	
	1022	Alan	Scroop	1973	Chevrolet	Corvette	Coupe	73VETT	CPA	
	0131	Jason & Jess	Ackland	1976	Holden	HX Sandman	Panel Van	HX	RVCCC	
	Electric Conversion	1482	Matt	Hooper	1970	Land Rover	109 Series 2a	Wagon	ELR109	
		0472	Matthew	Stead	1975	BMW	2002	Coupe	S058BMX	
Preservation Pre-1950s	0597	Alfred	Vella	1980	Toyota	Celica	Coupe	8813H9	WestDHVC	
	0642	Michael	Keogh	1922	Ford	Utility	Buckboard	XB622N	HCVCA	
	0646	Christopher	Hutchins	1925	Chevrolet	Utility	Utility	XA479A	HCVCA	
	0647	Nathan	Keogh	1927	Chevrolet	Utility	Buckboard	S112ASG	HCVCA	
	0086	Peter	Mead	1954	Wolseley	6/80	Sedan	351785		
	0859	Clive	Berry	1955	Austin	A30	Sedan	460837	A7CSA	
	1289	Giulia	Carrocci	1955	Volkswagen	Beetle	Coupe	SVW555	48-FJHCSA	
	0455	Ian	Tooley	1957	Volkswagen	Type 1 Beetle	Sedan	S524CGW	GVVCVC	
	1466	Nick	Maloney	1961	Holden	EK Special	Sedan	REK138	SMASA	
	0109	Nick	Maloney	1962	Chrysler	Imperial Crown	Coupe	62CROWN	SESM	
	0264	Phillip	Stephens	1962	Chrysler	Valiant	Sedan	S110BEH	SMASA	
	0917	Rob	Kavanagh	1962	Holden	EK	Sedan	EK0620	CNC	
	0282	Dale	Penney	1964	Ford	XM Falcon	Sedan	160117	MAPS	
	0690	Graham (Joe)	Geue	1965	Ford	XP Falcon	Utility	581760	SACC	
	1329	Tim	Elsom	1965	Fuji	Rabbit	Scooter	ELSOM	LCA	

AWARD ENTRANTS

Award	Entry	First Name	Last Name	Year	Make	Model	Body Style	Registration	Club
	0711	Dale	Tonkin	1970	Ford	XY	Sedan	RVB389	FCCSA
	0968	Roberto	Formato	1970	Mazda	Cosmo Sport	Coupe - Sports	RDR309	AROCA
	1344	Paul	Field	1970	Jaguar	E Type Series 2 2+2	Coupe	RGJ163	SCC
	0443	Amanda	Lloyd	1972	Holden	Belmont HQ	Sedan	RTY914	SMASA
	0621	Mark	Seidel	1972	Ford	Capri	Coupe	REC178	EFV8C
	1421	Barry	O'Shea	1973	Chrysler	Charger	Coupe	RLF795	CCCSA
	0314	Andrew	Bell	1974	Volkswagen	Passat	Sedan	SAS434	VWCSA
	0452	John	Newton	1974	Holden	Monaro LS	Coupe	LSHQ74	MCCSA
	0635	Trevor	Turton	1975	Holden	HJ	Utility	SBG212	BVGMOC
	1454	David	Keats	1975	Chrysler	GC Galant	Wagon	S463CRZ	CCCSA
	0901	John	Parr	1977	Chrysler	SE Regal	Sedan	17825H	
	0445	Leslie	Tarnay	1978	Holden	Commodore	Sedan	SDV851	SCC
	1174	Rick	Grainger	1978	Ford	XC Cobra	Coupe	SZC151	RCC
	0883	Andrew	Cadd	1980	Ford	XD Falcon S Pack	Sedan	SEG416	MOC
	1169	Dianne	Dolman	1983	Ford	XE Fairmont Ghia	Sedan	PURR14	ACC
	0203	Paul	Edginton	1984	Mercedes Benz	280CE	Coupe	SEC090	MBCSA
	0497	Ian	Rick	1986	BMW	E28 525e	Sedan	UTV170	ACCMB
	1141	Jamie	Crowe	1988	Holden	VL SS Group A Commodore	Sedan	AA365B	SMASA
	0182	Alan	Tudorovic	1989	Mercedes Benz	560SEC	Coupe	6173	MBCSA
	0202	Paul	Edginton	1990	Mercedes Benz	560SEC	Coupe	SEC	MBCSA
	0821	Peter	Kruger	1992	Mercedes Benz	600SL	Convertible	DPKV12	SCC
	0916	Dave	Kavanagh	1992	Volvo	940	Sedan	XD139L	SMASA
	1055	Chris	Knight	1992	BMW	K100RS	M/C Solo	S96ATW	COMCC

ENTRANT LIST

AWARD ENTRANTS



Concours d'Elegance



Preservation



Electric Conversion

Entry	First Name	Last Name	Year	Make	Model	Body Style	Registration	Club
0001	Michael	Neale	1923	Willys	Overland	Tourer	WZG354	
0002	Michael	Neale	1949	Bentley	Mark VI	Saloon	XC509Y	SCC
0003	Paul	Clisby	1934	Buick	SRS 50	Sedan	SRS050	AMHCC
0004	Lisa	Smith	1939	Vauxhall	J	Tourer - Convertible	WNO510	VOCASA
0005	Simon	Harrison	1966	Ford	Mark 1 Cortina	Sedan	RAD066	RSOCSA
0006	Stephen	Keogh	1935	Albion	Utility	Truck - Light	XA204H	HCVCA
0007	John	Johnson	1987	Volvo	780	Coupe	00313M	VCCVIC
0008	Eric	Rodda	1985	Holden	Barina MB	Hatchback	PLUGIN	
0009	Michael	Neale	1970	MG	B	Convertible	XNT526	
0010	Michael	Neale	1974	Leyland	Moke	Tourer	VKH381	SCC
0011	Debra	James	1970	Morris	Mini Cooper S MK II	Sedan	5627	CCCCSA
0012	Nick	Waldie	1993	M.A.N.	SL202	Bus	WJM984	
0013	Vicki	Smith	1974	Toyota	Celica	Coupe	UEG043	
0014	Alastair	Mcmillan	1979	Toyota	Corolla KE55	Coupe	SZN205	
0015	Jackson	Standen	1984	Volvo	240	Sedan	BLU240	
0016	Brett	Graham	1984	Holden	WB	Van	RAW253	
0017	Tony	Webb	1967	Prince	Skyline GTB	Sedan	CH5228	
0018	Grant	Mitton	1978	Holden	HZ Kingswood	Station Wagon	SCZ354	
0019	Darin	Marous	1988	Mitsubishi	Colt	Sedan	UJZ298	
0020	Symon	Williamson	1966	Land Rover	Series 2A 88"	Wagon	RPF157	
0021	Steve	Bennet	1966	Porsche	912	Coupe	SWB066	
0022	Jonathan	Niehuus	1963	Ford	Thunderbird	Hardtop	RFN038	
0023	David	Daw	1977	Chevrolet	Corvette	Coupe	CC570Y	
0024	Jason	Lowe	1950	Chevrolet	Styleline	Sedan	CHEV50	
0025	Richard	Carroll	1968	Holden	HK	Coupe	SDO071	
0026	Josh	Cunningham	1984	Datsun	1200	Utility	DAT1200	
0027	Josh	Cunningham	1972	Mazda	RX 2	Coupe - Club	72RX2	
0028	Roger	Mcmellon	1964	Dodge	Phoenix	Sedan	RVJ454	
0029	Luke	Mitchell	1982	Holden	Commodore	Sedan	WXL941	
0030	Neil	Bisset	1964	MG	B	Convertible	DD539L	MGCCSA
0031	Clare	Strachan	1957	MG	A	Tourer - Convertible	MGA1957	
0032	Allan	Mitchell	1970	Ford	Falcon	Sedan	XY0000	FCCSA
0033	Mark	Strachan	1964	Ford	Cortina	Sedan	64MK1	SCC
0034	Mark	Strachan	1968	Volkswagen	Kombi	Van	XA000D	SCC
0035	Corey	Turnbull	1984	Holden	HDT VK SS	Sedan	SSHDT	
0036	Sean	Basford	1969	BMW	2002	Coupe	BMW069	BMWOCSA
0037	Greg	Kennedy	1971	Holden	Kingswood	Sedan	RBG271	FX-HZHCC
0038	Christopher	Boydon	1974	Dodge	Valiant	Utility	RFW127	CCCSA
0039	Alexander	Hearse	1971	Ford	Falcon XY GT	Sedan	RGT701	PCCSA
0040	Ryan	Piekarski	1969	Holden	HT Monaro GTS	Coupe	RBV890	
0041	James	Mcwaters	1977	Chrysler	Charger	Coupe	SXJ402	
0042	Alan	Litchfield	1972	Chevrolet	Corvette	Coupe	RAY072	CCSA
0043	Richard	Simmons	1979	Datsun	Stanza	Coupe	STANZA	SMASA
0044	Richard	Simmons	1979	Nissan	Skyline	Coupe	DD521B	SMASA
0045	Adam	Kretschmer	1968	MG	B	Coupe - Convertible	MGB1968	MGCCSA
0046	Curtis	Mitchell	1979	Toyota	FJ40	Wagon	VBP193	
0047	Stuart	Ramsey	1928	Ford	Model A	Roadster	S123AZR	MAFCSA
0048	Shaun	Kennedy	1953	Chevrolet	Bel Air	Sedan	CHEV53	SMASA
0049	Andrew	Telford	1972	Chevrolet	Corvette	Coupe	CC140N	MBMRCSA
0050	Matthew	Benneche	1955	Holden	FJ Special	Sedan	31066	A7CSA
0051	Kym	Butson	1922	Indian	Scout	M/C Solo	S74BKJ	
0052	Adrian	Belperio	1990	Mercedes Benz	300SE	Sedan	VAH454	
0053	Rocco	Pascale	1977	Chrysler	CL Charger	Coupe	ROC770	WRNRCC
0054	Nicholas	Phillips	1974	Volvo	164TE	Sedan	S600BOI	VCCSA
0055	Chris	Symons	1970	Holden	Brougham	Sedan	RHC426	SMASA
0056	Dennis	Mobbs	1959	Holden	FC	Station Sedan	RFC133	FE-FCHCCSA
0057	Dennis	Mobbs	1978	Holden	Gemini	Coupe	SLE780	
0058	Allan	Smith	1958	Morris	Minor	Coupe	MORRIE	MMCCSA
0059	Andrew	Heffernan	1978	Chrysler	CM Regal	Sedan	SDK665	CCCSA
0060	Scott	Duncan	1963	Austin Healey	Sprite	Convertible	SPR062	AHSDC
0061	Kimberly	Falco	1967	Ford	Mustang	Coupe	S767BSZ	MOC
0062	Tim	Browne	1927	Dodge	Tourer	Tourer - Convertible	OO1927	
0063	David	Tolcher	1971	Dodge	AT4 - 575	Tray Top	SB03DG	LMVEMC

ENTRANT LIST

AWARD ENTRANTS

C Concours d'Elegance

P Preservation

E Electric Conversion

Entry	First Name	Last Name	Year	Make	Model	Body Style	Registration	Club
0064	Bruce	Trebilcock	1954	MG	TF	Tourer	54MGTF	MGCCSA
0065	Simon	Mander	1936	Austin	Seven	Coupe - Doctors	S536ATL	A7CSA
0066	Heidi	Mander	1966	Ford	Thunderbird	Coupe	66BIRD	
0067	Mike	Pearl	1962	Holden	EK	Station Sedan	SEK362	
0068	Wayne	Buckerfield	1950	BSA	Bantam	M/C Solo	Buckerfield1	
0069	Rick	Lloyd	1976	Triumph	Stag	Convertible	13647H	ABCCC
0070	Richard	Walne	1955	Austin Healey	BN100	Tourer	VXX699	AA40CC
0071	Mark	Hine	1950	Vincent	Rapide	M/C Solo	04RH8	VRV
0072	Robin	Dunk	1971	MG	Midget	Convertible	RDI275	SpriteCSA
0073	Mervyn	Dunk	1961	Wolseley	15/60	Sedan	S386ABK	RVCCC
0074	Michael	Munson	1980	Chevrolet	Camaro Z28	Coupe	CMROV8	ACC
0075	Stephen	Perkins	1993	Jaguar	XJ40	Sedan	S329CGD	TBAC
0076	Trevor & Bernie	Young	1963	Holden	EH	Utility	WNF263	JMCCA
0077	Simon	Wakely-Young	1963	Holden	EJ	Utility	NQM612	JMCCA
0078	Corrin	Wakely-Young	1983	Toyota	Landcruiser	Wagon	S866CLJ	JMCCA
0079	Matthew	Carn	1991	Holden	Commodore	Sedan	VKU921	CCHE
0080	Tim	White	1966	Ford	Mustang	Coupe - Convertible	S910AOI	MOC
0081	Russell	Stuckey	1969	Fiat	500	Sedan	3097H2	CCitCCVIC
0082	Richard	Daly	1971	Chrysler	By Chrysler	Hardtop	RXW253	CMCC
0083	Colin	Mcdonald	1993	BMW	840Ci	Coupe	45123J	PMEA
0084	Tim	Salmon	1966	Morris	Mini	Coupe	MINI66	MiniCSA
0085	Malcolm	Wilson	1954	Austin Healey	100/4	Roadster - Sports	10584H	ColCCC
P 0086	Peter	Mead	1954	Wolseley	6/80	Sedan	351785	
0087	Franz	Heinrich	1954	Ford	Zephyr Mark I	Sedan - Club	ZCAR54	PAVRC
0088	Greg	Lush	1972	Leyland	Mini	Clubman	FOSL49	MiniCSA
0089	Peter	Castle	1983	Datsun	280ZX	Coupe - Sports	S916AYY	
0090	Wayne	Biggs	1974	Volkswagen	Beetle	Sedan	RZZ734	
0091	Ian	Stefanoff	1974	Holden	LH Torana	Sedan	SAO260	
0092	Dave	Ball	1974	Volkswagen	Beetle	Saloon	BTLE74	SMASA
0093	Jac	Ericson	1993	M.A.N.	SL202	Bus	WJP533	SCC
0094	Albert	Mead	1979	Toyota	Landcruiser	Utility	RHJ045	AtujMCC
0095	Trent	Truran	1973	Holden	HQ	Sedan	RDG776	SMASA
0096	Jake	Rivers	1978	Ford	F100	Pickup	HOMERJ	
0097	Damian	Clare	1977	Pontiac	Trans AM	Coupe	TA77	
0098	Michael	Gilmore	1972	Austin	Kimberley Mk II	Sedan	Gilmore1	MGCCSyd
0099	Stephen	Morris	1990	BMW	535i	Sedan	70431H	BMWCCVIC
C 0100	Volker	Stroeher	1964	Volkswagen	Karmann Ghia	Coupe	S426CRW	
0101	Paul	Lennon	1960	Austin Healey	3000	Tourer - Convertible	3000MK1	AHOC
0102	Matthew	Ford	1974	Toyota	FJ40 Landcruiser	Utility	S672BJA	
0103	Paul	Spizzo	1964	Volkswagen	Kombi	Van	SPLT64	VECSA
0104	Paul	Spizzo	1954	Volkswagen	Kombi	Utility	BARNIE	VECSA
0105	Darren	Penrose	1962	Holden	EJ	Sedan	REJ062	EHHC
0106	Ralph	Uppill	1924	Dort	Sports Tourer	Tourer - Sports	46876	AHMRC
0107	Shane	Grant	1977	Holden	LX Torana SLR 5000	Sedan	RCH308	SMASA
0108	Ricky	Belisle	1976	MG	Midget	Tourer - Convertible	NTN888	SpriteCSA
P 0109	Nick	Maloney	1962	Chrysler	Imperial Crown	Coupe	62CROWN	SESM
0110	Warren	Inman	1966	Volkswagen	Beetle 1300 Deluxe	Sedan	BUG066	MGCCSA
0111	Tom	Harlow	1969	Shelby	GT350	Convertible	SNAKE	SCC
0112	Chelsea	Porter	1974	Ford	ZG Fairlane	Sedan	SNM709	GVVCVC
0113	Peter	Otten	1969	MG	B	Convertible	VLU117	MGCCSA
0114	Nigel	Wooster	1917	Dodge	Model 30	Roadster	S351CFI	GVVCVC
0115	Bob	Kenny	1924	Ford	Model T	Speedster	S178CSJ	NMVM
0116	Giancarlo	Rodella	1970	Ford	Capri	Coupe	RHB502	A7CSA
0117	Bob	Kammerman	1959	Holden	FC	Sedan	OLDN59	FX-HZHCC
0118	Joseph	Brettig	1982	M.A.N.	SL200	Bus	STA812	
0119	Ugur	Ahmet	1974	Chrysler	Valiant	Sedan	MRLIME	CCCSA
0120	Peter	De Jong	1962	Chrysler	Valiant S Series	Sedan	XA560T	
0121	John	Messent	1955	Jaguar	Mk VII	Saloon	305	JCCC
0122	Quentin	Van Weenen	1969	Mercedes Benz	280SE	Sedan	SKR357	SMASA
0123	Alex	Ross	1967	MG	B	Roadster - Sports	67B	SCC
0124	Jenny	Marshall	1957	Armstrong Siddeley	Sapphire	Limousine	AA256C	ASCCA

ENTRANT LIST

AWARD ENTRANTS



Concours d'Elegance



Preservation



Electric Conversion

Entry	First Name	Last Name	Year	Make	Model	Body Style	Registration	Club
0125	Jeremy	Robinson	1970	MG	Midget	Roadster - Sports	MHL17	SpriteCSA
0126	Mike	Barkway	1978	Mercedes Benz	280SE	Sedan	SHX280	MBCSA
0127	Trevor & Kathy	Donaldson	1969	Peugeot	404	Sedan	PEU404	CAF
0128	Peter	Forbes	1951	Bentley	Mark 6	Saloon	8998	RROCA
0129	Ian	Ross	1962	Morris	850	Sedan	SI136B	
0130	Albert	Sabadin	1977	Chrysler	Charger	Coupe	SSH260	CCCSA
C 0131	Jason & Jess	Ackland	1976	Holden	HX Sandman	Panel Van	HX	RVCCC
0132	Peter	Spajic	1970	Holden	HG Monaro	Coupe	SHG708	
0133	Paul	Simmonds	1972	Chrysler	VH Valiant	Sedan	SVH072	SMASA
0134	Paul	Sutton	1967	Jaguar	Series 1.5 E Type	Coupe - Sports	XC430P	SCC
0135	Joshua	Boag	1974	Toyota	Sprinter Trueno	Coupe	CC086V	
0136	Jon	Wood	1968	Datsun	2000 Sports	Convertible	RSL705	DSOANSW
0137	Chris	Allen	1964	Volvo	121	Wagon	RAW121	VCCSA
0138	John	Petr	1975	Honda	Civic	Hatchback	SUX278	
0139	Marc	Margetts	1986	Lotus	Excel	Coupe	6003H2	
0140	John	Mconville	1973	Mercedes Benz	280E	Sedan	2340J	SCHMC
0141	Andrew	Hitchcock	1972	Ford	XY	Sedan	S160ADA	PLAC
0142	Vanessa	Binks	1985	Mercedes Benz	280E	Sedan	VNR575	VMCC
0143	David	Gavini	1959	Cadillac	Devile	Coupe - Convertible	RIZ059	GVVCVC
0144	Nicholas	Benn	1985	Mercedes Benz	O305	Bus	WJI659	HCVCA
0145	Ian	Sellick	1966	Ford	XP Falcon	Hardtop	26983	SMASA
0146	Michelle	Vidau	1964	Holden	EH	Wagon	MV1963	
0148	Gary	Pascoe	1956	Morris	Minor	Utility	S869AEW	CNC
0149	Martin	Brown	1968	Ford	Falcon XT	Utility	RFN700	FOCCSA
0150	Lyn	James	1974	Ford	Escort Mk I Mexico (Replica)	Coupe	SXH635	FOCCSA
0151	Rod	Leslie	1982	BMW	E21 323i	Sedan	VGS736	BMWDCSA
0152	Tim	Noblet	1973	Mercedes Benz	280CE	Coupe	SAA008	
0153	Jim	Pilkington	1978	Mercedes Benz	280E	Sedan	VJJ404	HMVCSA
0154	Karen	Lynch	1980	Leyland	Moke Californian	Tourer	MOKE04	SAMC
0155	Allan	Goddard	1929	Chevrolet	Tourer	Tourer	XRR993	
0156	Mark Keith	Badcock	1959	Morris	Minor	Sedan	XX190M	MCSA
0157	Mark Keith	Badcock	1959	Triumph	Herald	Coupe	S245CFI	
C 0158	Daniel	Scott	1969	Mercedes Benz	280SE	Sedan	SEW108	SCC
0159	Corey	Armstrong	1973	Mazda	Capella RE	Sedan	RLF546	SDCC
0160	Velimir	Satalic	1972	Ford	XA GT	Sedan	VEL351	PLAC
0161	Michael	Klein	1939	Buick	Roadmaster	Sedan	MA0066	BCCA VIC
0162	Trevor	Unwin	1978	Holden	HZ	Wagon	SKS999	FLCCSA
0163	Mike	Fawcett	1963	Land Rover	88" SWB	Utility	UFE859	
0164	Fraser	Bell	1975	Mercedes Benz	450SL	Convertible	S616CUH	MiniCSA
0165	Stephen	Bryers	1970	Holden	Monaro	Coupe	PTW068	SCACC
0166	Allan	Ingham	1975	Holden	Monaro	Coupe	SRF109	MCCSA
0167	Tara	Crossman	1972	Volkswagen	Beetle	Sedan	ROL378	
0168	Brenton	Woodward	1976	Holden	Torana SS	Hatchback	LXSS	SEAC
0169	Jon	Sharp	1965	Ford	GT Cortina	Sedan	XLK827	
0170	Duncan	Hughes	1982	Holden	Commodore	Sedan	VH3300	SMASA
0171	Paul	Richards	1973	ASP	340 A	Clubman	AA767W	SCC
0172	Tony	Cappelluti	1967	Austin Healey	3000 BJ8	Coupe - Convertible	AH1967	
0173	Claire	Nairn	1942	Ford	GPW	Utility	NAVY42	
0174	Trevor	Unsworth	1927	Chrysler	60	Roadster	CH1927	GVVCVC
0175	Ron	Sernecki	1991	Honda	Civic	Sedan	VSR348	
0176	Colin	Lock	1970	Ford	Mustang	Coupe	BLUE70	MOC
0177	Tyson	Jeanes	1955	Morris	Minor	Sedan	VKV850	MMCCSA
0178	Matthew	Dent	1957	MG	A	Roadster	MARILYN	MGCCSA
0179	Roger	Sweetman	1964	Daimler	250	Saloon	S321CHL	JCCC
0180	John	Jeffery	1966	Ford	Thunderbird	Coupe	2501	CACMC
0181	John	Mallia	1964	Wolseley	6/110	Sedan	06789H	WCCV
P 0182	Alan	Tudorovic	1989	Mercedes Benz	560SEC	Coupe	6173	MBCSA
0183	Rob	Lonie	1968	MG	B	Roadster	RDL068	
0184	Neville	Paech	1972	Chevrolet	Corvette	Coupe	DD141F	MCCC
0185	Michael	Bock	1944	Ford	Blitz	Pickup	C22991	MVPSSA
0187	Geoff	Reid	1957	Dodge	Truck	Truck - Light	XDJ057	SCC
0188	Darren	Feuerherdt	1972	Holden	XU1 LJ Torana	Coupe	RED932	HTCSA

ENTRANT LIST

AWARD ENTRANTS

C Concours d'Elegance

P Preservation

E Electric Conversion

Entry	First Name	Last Name	Year	Make	Model	Body Style	Registration	Club
0189	Catherine	Son	1991	Toyota	Celica	Convertible	STC183	
0190	Scott	Woodcock	1959	Oldsmobile	Ninety Eight	Coupe	OLDS98	GVVCVC
0191	Steven	Pope	1959	Ford	100e Prefect	Sedan	ENFO59	
0192	Steve	Dalton	1979	Honda	CX500	M/C Solo	S95BEL	VJMC
0193	Penny	Yap	1968	MG	B MkII	Tourer	MGB68	
0194	Olaf	Bunge	1962	Chrysler	Valiant SV1	Sedan	RTU759	R&SSVCC
0195	Nicholas	Gabrielli	1970	Chrysler	Valiant VG Pacer	Hardtop	FUNCOOL	SICC
0196	Stuart	James	1967	Holden	HR	Sedan	STU186	FX-HZHCC
0197	Philip	Jackson	1948	MG	TC	Tourer - Sports	VEV066	SCC
0198	Andrew	Hayes	1913	Vauxhall	Prince Henry	Tourer	1913	VetCCSA
0199	Travis	Moore	1971	Holden	HQ GTS	Coupe	RXA969	
0200	Robert	Besednjak	1976	Chrysler	Charger	Coupe	RVK318	
0201	Wayne	Powell	1973	Holden	HQ	Sedan	RZS998	MCCSA
P 0202	Paul	Edginton	1990	Mercedes Benz	560SEC	Coupe	SEC	MBCSA
P 0203	Paul	Edginton	1984	Mercedes Benz	280CE	Coupe	SEC090	MBCSA
0204	John	Robinson	1958	Oldsmobile	Super 88 Holiday	Coupe	SLICKAZ	SMASA
0205	Paul	Smyth	1977	Holden	Torana LX	Sedan	SCK736	SMASA
0206	Nick	Fordham	1956	Volkswagen	Beetle	Sedan	296956	
0207	Gareth	Threlkeld	1956	Peugeot	203C	Sedan	GLW054	
0208	Thomas	Nowak	1984	Mazda	RX 7	Coupe - Sports	UXM666	
0209	Peter	Leipus	1965	Jaguar	S-Type	Sedan	DD569D	JDCSA
0210	Rob	Revitt	1969	Riley	Elf Mk III	Sedan	ELF069	RMCSA
0211	Chris	Ellis	1972	Chrysler	Pacer	Sedan	REG072	CCCSA
0212	Fran	Graetz	1973	Holden	HQ Premier	Sedan	RZL478	VMCC
0213	Neil	Graetz	1988	Daihatsu	Hijet	Truck - Light Delivery	UOK070	VMCC
0214	Neil	Graetz	1935	Panther	100	M/C Outfit	89696	VMCC
0215	Rob	Seidel	1953	Holden	48-215 FX	Sedan	215215	48-FJHCSA
0216	Trevor	Bailey	1949	Singer	4A	Roadster	101428	SingCCSA
0217	Thomas	Maguire	1989	BMW	325i	Convertible	XDP328	MBCSA
0218	Dick	Trice	1981	Laverda	Jota	M/C Solo	S96BPC	GVVCVC
0219	Kym	Atwell	1992	Mazda	MX5	Convertible	WPP394	
0220	Jason	Gilchrist	1971	Porsche	911 Targa	Coupe	A911	VWCSA
0221	Gavin	Meachern	1975	Holden	Torana LH SLR 5000	Sedan	GM5000	
0222	Robert	Styling Afsm Oam	1971	MG	B	Roadster	RJS854	MGCCSA
0223	Tamir	Dunning	1958	Chevrolet	Corvette	Convertible	58C1	SMASA
0224	Graham	Kimber	1976	Pontiac	Grand Prix	Coupe	DD923K	PontCC
0225	Mark	Wieszzyk	1969	Shelby	GT500	Fastback	69GT500	MOC
0226	David	Grear	1971	Ford	Fairlane	Sedan	RGW218	A7CSA
0227	Wojtek	Swietek	1974	Toyota	Land Cruiser	Coupe - Convertible	SHM061	UC
0228	Graeme	Halprin	1938	Morgan	4/4	Roadster	EVR240	VetCCSA
0229	Bill	Sandford	1966	Holden	HD Special	Sedan	OUR179	
0230	Trevor	Chapman	1974	Triumph	Spitfire	Sports	S263BYL	AMHCC
0231	Lesley	Dellar-Levingston	1990	Mazda	MX5	Tourer	TOYMX5	
0232	Lynette	Spry	1977	Mercedes Benz	450SL	Coupe - Convertible	S367ASG	SCC
0233	Simon	Phin	1970	Chrysler	VG Valiant Regal	Sedan	RHG694	CCCSA
0234	Patrick	Gauci	1950	Morris	Minor Low Light	Sedan	MNT150	MCSA
0235	Michael	Chancellor	1954	Morris	Minor	Sedan	S747CUH	MCCSA
0236	Peter	Parsons	1954	Holden	FJ	Sedan	VYK620	FX-HZHCC
0237	Peter	Hattersley	1970	Pontiac	Trans AM	Coupe	DD682J	PontCC
0238	Michael	Pretty	1987	M.A.N.	SG280H	Bus	STA954	HCVCA
0239	David	Nelson	1950	Fiat	Topolino	Sedan	FIAT50	IMCC
0240	Brian	Cramond	1965	MG	B	Roadster	RVF966	A7CSA
0241	Brian	Cramond	1969	Morris	Mini	Sedan	RFJ498	A7CSA
0242	Campbell	James	1966	Austin Healey	Sprite	Convertible	SPR966	
0243	Wasantha	Wadanambi	1961	Morris	Minor	Coupe	UPL614	MCSA
0244	Miike	Thiele	1958	Cadillac	Coupe Deville	Coupe	S049CDK	TBAC
0245	Michael	Bosnakis	1965	Ford	Mustang	Coupe	65PONY	
0246	David	Ey	1942	Indian	741B	M/C Solo	INDI42	VVMCCSA
0247	Chris	Browne	1974	Ducati		M/C Solo	SS1974	DOCSA
0248	Mark	Standen	1971	Volvo	142S	Sedan	RLU059	VCCSA
0249	Emma & Alexander	Borgas & Pickering	1967	MG	B	Convertible	27681	FLCCSA
0250	John	Birrell	1923	Gray	N	Buckboard	GRAY23	NARC
0251	Daniel	Rutgers	1965	Land Rover	Series 2	Utility	26204	SCC

ENTRANT LIST

AWARD ENTRANTS

C Concours d'Elegance

P Preservation

E Electric Conversion

Entry	First Name	Last Name	Year	Make	Model	Body Style	Registration	Club
0252	Gerald	Lee	1990	Subaru	Brumby Agquip 90 Special	Utility	AGQP90	AMHCC
0253	Michael	Beesley	1963	Ford	Thunderbird	Coupe	SPR163	CNC
0254	Chris	Botchen	1974	Holden	HQ	Sedan	H350Q	GVVCVC
0255	Chris	Botchen	1929	Hupmobile	Century A	Coupe	HUPP29	GVVCVC
0256	John	Graetz	1972	Holden	Torana S	Sedan	RXU105	HTCSA
0257	Ian	Thompson	1956	Maico	Taifun 400	M/C Solo	S4643	HMCCQLD
0258	Dale	Wilson	1954	Volkswagen	114	Sedan	VW1954	VWCSA
0259	Chris	Thorne	1959	SMZ	S3A	Convertible	RZE924	SMASA
0260	Alex	Gavini	1971	Ford	XY Falcon 500	Sedan	RJG023	SMASA
0261	Jacek	Holgar	1971	Volkswagen	Manta Ray II	Buggy	RTM365	VCCSA
0262	Jacek	Holgar	1971	Volvo	1800E	Coupe	RKT766	VCCSA
0263	Jose	Ribeiro	1972	Porsche	911T	Targa Top	S564BWV	PCCSA
0264	Phillip	Stephens	1962	Chrysler	Valiant	Sedan	S110BEH	SMASA
0265	Geoff	Lemar	1936	Triumph	L2/1	M/C Solo	87480	SMASA
0266	Daryl	Mckay	1971	Holden	Torana LC	Sedan	RTT891	ACC
0267	Doug	Winfield	1968	Chevrolet	Camaro	Coupe	S322BBA	CPA
0268	Howard	Locking	1991	Holden	VN Commodore S	Sedan	313205	GVVCVC
0269	Ashley	Giles	1964	Ford	Fairlane	Sedan	S809CDV	
0270	Craig	Johnson	1962	Ford	Falcon Futura	Sedan	UOZ959	FCCSA
0271	Robin	Puckridge	1960	Humber	Super Snipe	Sedan	H17668	HCCSA
0272	Michael	Pavlou	1975	Holden	HJ	Sedan	SWS135	VVCAA
0273	Clive	Schlegelmilch	1959	MG	A	Tourer - Sports	SCH013	A7CSA
0274	Merawyn	Hocking	1973	Jensen	Healey Mk II	Convertible	UPF511	A7CSA
0275	Ian	Maxted	1929	Austin	7	Tourer	VKU563	VSCCSA
0276	Susie	Morris	1986	Isuzu	Bellett	Sedan	RNG810	AHR
0277	Mike & Elsj	Coles	1978	Fiat	X1/9	Coupe - Convertible	SCT596	FLCCSA
0278	Allan	Forbes	1953	Holden	FJ	Sedan	FJ0053	48&FJHOCNSW
0279	Clive	Palmer	1977	Holden	HX	Sedan	SHM703	PADARC
0280	Jenny	Schiller	1955	MG	TF 1500	Sports	MG1955	MGCCSA
0281	Alan	Sharp	1928	Dodge	Tourer	Sedan - Touring	DB0028	SMASA
0282	Dale	Penney	1964	Ford	XM Falcon	Sedan	160117	MAPS
0283	Andrew	Gepp	1973	Ford	XA GT	Utility	RYD156	SMASA
0284	Ross	Takacs	1979	Holden	Statesman	Sedan	VOC902	FX-HZHCC
0285	Lino	Nuzzo	1956	Chevrolet	Bel Air	Sedan	BEL056	
0286	Nerine	Maslin	1937	Austin	7	Tourer - Convertible	VVP649	A7CSA
0287	Jason	Quigg	1967	Prince	Skyline GT	Sedan	CH9558	PSGTR
0288	Zane	Oliphant	1976	Datsun	260Z	Coupe - Sports	ZEE260	ACC
0289	David	Berner	1967	Ford	Mustang	Coupe	29687H	HBCC
0290	Graeme	Oliver	1967	Chrysler	VE Valiant	Sedan	82699H	
0291	Paul	Kirkham-Stevens	1954	Morris	Minor	Sedan	WNK020	A7CSA
0292	Terry	Shipard	1989	Holden	SV 5000	Sedan	SV0094	RROCA
0293	Stephen	Arthur	1977	Triumph	Stag	Convertible	SYD077	StagQCSA
0294	Brad	Scrivens	1955	Austin	A30	Saloon	SYD876	A7CSA
0295	Andrew	Ingleton	1976	Chrysler	VK Valiant	Sedan	SVK076	CCCSA
0296	Andrew	Ingleton	1972	Chrysler	VH Charger 770	Coupe	SVH340	CCCSA
0297	Paul	Rees	1986	Citroën	BX 16 TRS	Coupe	VXJ194	
0298	Debra	Cliff	1971	Ford	XY Fairmont	Sedan	RVA394	PADARC
0299	John	Baker	1968	Ford	Galaxie	Sedan	RSL963	MCCC
0300	Brett	Riley	1959	Edsel	Ranger	Sedan	S240BAU	ASRFSA
0301	Bill	Bentley	1960	Elfin	Streamliner	Sports	S190CAN	SCC
0302	Allan	Hawkes	1960	MG	A	Roadster - Sports	100054	MGCCSA
0303	Ryan	Couchman	1978	Holden	HZ	Wagon	SXV936	SMASA
0304	Paul	Coombe	1925	Dodge	Tourer	Tourer	69058	CRCASA
0305	Steven	Willacy	1976	Ford	Fairmont GXL	Sedan	SCR888	FOCCSA
0306	Elise	Butson	1966	Volkswagen	Beetle	Sedan	SAS785	VWCSA
0307	Raymond	Grose	1984	Holden	WB	Sedan	SDV084	CCHE
0308	Ryan	Semmler	1977	Holden	HX	Wagon	SHE659	BVGMOC
0309	Malcolm	Jowitt	1965	Chrysler	Valliant AP6 V8	Sedan	RAV200	SCC
0310	Benny	Marsh	1993	Toyota	Celica	Coupe	VNW855	
0311	Guy	Ellis	1929	Armstrong Siddeley	20 hp	Saloon	98890H	CCLVDC
0312	Chris	Craft	1974	Holden	HQ Premier	Sedan	PREM74	SMASA
0313	Wes	Bray	1964	MG	1100	Sedan	WB1100	MGCCSA

ENTRANT LIST

AWARD ENTRANTS

C Concours d'Elegance

P Preservation

E Electric Conversion

Entry	First Name	Last Name	Year	Make	Model	Body Style	Registration	Club
P 0314	Andrew	Bell	1974	Volkswagen	Passat	Sedan	SAS434	VWCSA
0315	Greg	Stafford	1970	Triumph	TR6	Coupe - Convertible	18226H	MGCCCast
0316	Matthew	Earley	1973	Kawasaki	Z1 900	M/C Solo	SP118	
0317	David	Taylor	1976	Moto Morini	350 Sport	M/C Solo	TEM091	
0318	Dom	Zappia	1979	BMW	633CSI	Coupe	AA605F	IMCC
0319	Dom	Zappia	1959	Fiat	500	Coupe	RSO165	IMCC
0320	Nick	Hastings	1990	Ford	Laser TX3 Turbo 4WD	Hatchback	BOOST4	
0321	Evan	Wrobel	1968	Holden	HB Brabham SL Torana	Sedan	RYU761	
0322	Ed	Ordynski	1969	Morris	Cooper S	Sedan	RNF377	AMHCC
0323	John	Van Der Lans	1984	Nissan	Bluebird	Sedan	TRX910	RCC
0324	Peter	Bartlett	1949	Fiat	500C	Cabriolet	FIAT49	IMCC
0325	Mark	Harvey	1976	Datsun	260Z	Coupe	LUMSHUI	NDCC
0326	Chris	Teare	1963	Cadillac	Series 62	Coupe - Convertible	SEXTY3	RHR&C
0327	Colin	Rogers	1952	Holden	48-215 FX	Utility	UYA177	MMCCSA
0328	Colin	Rogers	1955	Morris	Minor	Sedan	SXF497	MMCCSA
0329	Robert	Francis	1977	Yamaha	XT500C	M/C Solo	TEH651	AtujMCC
0330	Jessie	Sawford	1970	Austin	1800	Sedan	RCN763	A7CSA
0331	Richard	Verner	1964	Rambler	Classic 660 Cross Country	Wagon	S122BKF	
0332	Richard	Verner	1964	Rambler	American 330	Sedan	UJY844	
0333	Simon	Mangion	1957	Chevrolet	Bel Air	Coupe	57FOX	SMASA
0334	Clinton	Pitman	1978	Ford	Cortina	Sedan	S414CLN	FOCCSA
0335	Narelle	Pitman	1985	Ford	Telstar	Sedan	S050CSG	FOCCSA
0336	Sarah	Warmington	1975	Volkswagen	Kombi	Van	SVA113	VECSA
0337	Toby	Coates	1959	Morris	Minor 1000	Sedan	WYX938	MCSA
0338	Toby	Coates	1927	Standard	Open Tourer	Tourer	XA684F	MMCCSA
0339	David	Evans	1966	Ford	Futura	Coupe	S129CAV	
0340	Fiona	Miller	1967	Dodge	Polara	Coupe	S831BJJ	CRCASA
0341	Geoffrey	Mitton	1904	De Dion-Bouton	V	Rear Entrance Tonneau	1866	SCC
0342	Grant	Barker	1980	Ford	Falcon	Utility	SXD380	SMASA
0343	Daniel	Simpson	1976	Land Rover	Range Rover	Station Wagon	RRC076	LRRSA
0344	Mat	Wallis	1975	Ford	Fairmont	Sedan	SFM075	
0345	Mat	Wallis	1977	Mercedes Benz	240D	Sedan	SMP642	
0346	Malcolm	Osborne	1961	Vauxhall	Victor Super	Sedan	VAUX61	VOCASA
0347	Travis	McDonald	1915	Ford	Model T	Tourer	DD241B	VetCCSA
0348	John	Cattanach	1963	Holden	EH	Utility	0117H7	MD
0349	Justin	Doran	1971	Chrysler	CH Hardtop	Hardtop	RLX739	CCCSA
0350	Benjamin	Fletcher	1958	Morris	Minor 1000	Hatchback	BF1000	
0351	Herbert	Grarock	1974	Holden	Monaro GTS	Sedan	RHQ774	NHVC
0352	Ronald	Versteegh	1968	MG	Midget	Tourer	UWD885	DOCSA
0353	Damien	Byrne	1968	Morris	Mini Deluxe	Coupe	SML068	SMASA
C 0354	Dino	Pietrobon	1968	Plymouth	Road Runner	Coupe	RRJ426	CMCC
0355	Simon	Manifold	1969	Ford	Falcon XT 500	Sedan	RXT069	SMASA
0356	Trish	Osterman	1974	Bedford	CF	Van	S320AZE	DOCSA
0357	Clynton	Parsons	1976	Leyland	Moke	Utility	MOKE76	DOCSA
0358	Benjamin	Cauchi	1975	Datsun	260Z 2+2	Sedan	GRN260	AMCCSA
0359	Peter	Brown	1970	Morris	Mini Cooper S	Saloon	RCO838	
0360	Hamish	McDonald	1913	Ford	Model T	Tourer	DD290B	VetCCSA
0361	Scott	Brumfield	1977	Holden	HZ Kingswood	Sedan	SSU192	FX-HZHCC
0362	Pete	Thornton	1969	Triumph	TR6	Coupe - Convertible	TR1969	TSOASA
0363	Marc	Read	1955	MG	TF 1500	Roadster - Sports	MG0055	MGCCSA
0364	Dennis	Cottle	1976	Holden	Kingswood	Station Wagon	SRX155	FX-HZHCC
0365	Craig	Kepgh	1975	Chrysler	VJ Charger	Coupe	YGA985	CACMC
0366	Kingsley	Taylor	1930	Ford	Model A	Coupe	S172AIA	MTFCA
0367	Lucien	Young	1972	Peugeot	504	Saloon	PUG504	PCC
0368	Albert	Camilleri	1975	Holden	HJ Coupe Utility	Utility	SFJ331	FX-HZHCC
0369	Paul	Willmott	1975	Harley Davidson	FX	M/C Solo	THL604	
0370	Greg	Watson	1949	Rover	P3 Rover 75	Sedan	S493CSL	RCCSA
0371	Arch	Boonen	1976	Mercedes Benz	450SL	Convertible	SL1976	MBCSA
C 0372	Mick	Monterosso	1953	Holden	FX	Sedan	RFX853	48-FJHCSA
0373	Ross	Treadwell	1959	MG	A	Coupe	ROP152	MGCCSA
0374	Chris	Grantham	1952	Jawa	500 Perak	M/C Solo	JAWA53	

ENTRANT LIST

AWARD ENTRANTS



Concours d'Elegance



Preservation



Electric Conversion

Entry	First Name	Last Name	Year	Make	Model	Body Style	Registration	Club
0375	Robert & Elizabeth	Simpson Grivell	1959	MG	A	Roadster	MGA059	MGCCSA
0376	Arch	Boonen	1975	Triumph	TR6	Convertible	SOY666	TSOASA
0377	Julie	Stevens	1976	Volvo	244DL	Saloon	SKD710	VCCSA
0378	Julia	Clancy	1937	Austin	7	Tourer - Convertible	WMU756	A7CSA
0379	Stephen	Chalker-Holz	1946	Mercury	Coupe	Coupe	15677J	
0380	Liam	Dwyer	1951	BSA	Bantam	M/C Solo	S42BOR	
0381	Dr Alan	Reddrop	1950	Daimler	Consort DB18	Saloon	WNH515	RMCSA
0382	Steven	Philp	1975	Datsun	120Y	Sedan	RAD210	ADC
0383	Kellie	Baker	1968	MG	B	Coupe - Convertible	DD851S	MGCCSA
0384	Arch	Boonen	1970	Rambler	Javelin	Coupe	RPS333	AMCRCA
0385	John	Moss	1987	BMW	635CSI	Coupe	BMW635	GVVCVC
0386	Chris	Shaw	1977	BMW	320	Sedan	CSE213	BMWCCVIC
0387	John	Pritchard	1966	Holden	HR	Utility	HR2106	48-FJHCSA
0388	Alexander	Van Den Berk	1981	Volvo	244	Sedan	VUW248	VCCSA
0389	Nathan	Newstead	1973	Land Rover	Series 3	Tray Top	RYJ283	
0390	Mike	Sellwood	1964	Holden	EH	Sedan	UEF718	FX-HZHCC
0391	Peter	Jarrett	1964	Holden	EH Special	Wagon	RWW124	
0392	Brad	Mottram	1955	Jaguar	XK140	Coupe - Fixed Head	0116H2	JCCVIC
0393	Rhoda	Jeffery	1983	Toyota	Hilux	Utility	UMT998	GVVCVC
0394	Matthew	Bond	1971	Buick	Riviera	Sedan	RIV455	SCC
0395	Matthew	Bond	1960	Jaguar	Mk II	Sedan	DD828M	SCC
0396	Martin	Lewis	1946	Austin	16	Sedan	AUST16	A7CSA
0397	David	Collings-Wells	1986	Honda	Integra	Hatchback	TOBY86	
0398	Craig	Collings-Wells	1990	Honda	Concerto	Sedan	VAV888	HonCC
0399	Robert	Mclaughlin	1968	Alfa Romeo	1750 GTV	Coupe	ORM105	AROCA
0400	Richard	Counsel	1973	Aston Martin	AMV8	Coupe	AML8	AMOCVIC
0401	Ian	Rose	1964	Holden	EH	Sedan	S716BxB	MVMC
0402	Ian	Rose	1956	Holden	FJ	Sedan	S578COE	MVMC
0403	Ian	Rose	1979	Holden	UC Torana	Sedan	RUC888	MVMC
0404	Heather	Thomson	1969	MG	B	Roadster	10818H	MGCCVIC
0405	Philip	Walker	1971	MG	B	Roadster	RGX511	MGCCSA
0406	Christopher	Morris	1979	Daihatsu	F20	Four Wheel Drive	SEA444	SMASA
0407	Andrew	Kynaston	1955	Morris	Minor	Sedan	NODDY2	MVVC
0408	John	Taylor	1933	Crossley	10	Tourer - Convertible	CR1933	CAF
0409	Shane	Ferguson	1968	Jaguar	420G	Sedan	RNR964	JDCSA
0410	Chris	Rover	1965	Ford	Mustang	Coupe	MUST65	MOTM
0411	Jamie	Reese	1974	Chevrolet	Corvette	Coupe	74VET	CCSA
0412	Denise	Murison	1969	MG	B	Convertible	VPB258	MGCCSA
0413	Michael	Mullins	1992	Subaru	Liberty RS Turbo	Wagon	RST000	NDCC
0414	Simon	Ringwood	1971	Chrysler	VF Valiant	Sedan	RSX259	CRCASA
0415	Lee	Taylor	1958	Morris	Minor	Sedan	S612CNL	MCSA
0416	Kevin	Simonsen	1954	MG	TF1250	Roadster - Sports	MG054	MGCCGel
0417	Tony	Impedovo	1974	Holden	Monaro	Sedan	SNH293	AMCCSA
0418	Jordan	King	1954	Morris	Minor	Sedan	MM1954	MMCCSA
0419	Malcolm	Linke	1928	Chevrolet	National	Roadster - Sports	WPU525	
0420	Andrew	Lear	1975	Ford	XB GT	Sedan	JG3375	PLAC
0421	Garren	Harrell	1988	TVR	350 i	Convertible	TVR215	FLCCSA
0422	Tim	Williams	1983	Holden	Commodore SLE	Sedan	UXB267	SMASA
0423	David	Ford	1975	Toyota	Landcruiser	Station Wagon	S236CGW	MtGVVCC
0424	Michael	Brook	1971	Chevrolet	Corvette	Convertible	71VETT	PADARC
0425	Annette	Tonissen	1937	Buick	80/40	Sedan	UTT754	AAAC
0426	Ricky	Pietrobon	1968	Holden	HK Brougham	Sedan	RFK250	CMCC
0427	Mack	Ferguson	1971	Morris	Mini 1100	Saloon	UGA753	MtGVVCC
0428	Ian	Howard	1969	Land Rover	Series 2A	Utility	S631BSK	
0429	Steve	Arnold	1967	Holden	HR Premier	Sedan	REY888	SMASA
0430	Jim	Stephen	1967	Prince	Skyline GT	Sedan	70977H	PSGTR
0431	Caillin	Howard	1958	Land Rover	Series 1 88"	Convertible	S728CGF	LRRSA
0432	Caillin	Howard	1953	Land Rover	Series 1 80"	Convertible	S596CMB	LRRSA
0433	Lynette	Flavel	1953	Chevrolet	150	Sedan	VCL964	SMASA
0434	Julie	Tkalec	1969	Datsun	Sports 2000	Roadster	RAS550	
0435	Greg	Didenko	1976	Ford	Fairlane	Sedan	SYP737	FCCSA
0436	Brian	Zanker	1969	Ford	Falcon	Sedan	GTXW69	SCC
0437	Brian	Zanker	1970	Ford	Falcon XY	Sedan	ROA002	SCC

ENTRANT LIST

AWARD ENTRANTS

C Concours d'Elegance

P Preservation

E Electric Conversion

Entry	First Name	Last Name	Year	Make	Model	Body Style	Registration	Club
0438	Brian	Zanker	1970	Ford	Falcon	Sedan	RGT108	SCC
0439	Edward	Little	1990	Volkswagen	T3 Syncro	Van	S474CNR	
0440	Steve	Dalton	1974	Holden	Monaro GTS	Coupe	RHQ777	MCCSA
0441	Richard	Verco	1974	Holden	Monaro GTS	Coupe	RHQ555	MCCSA
0442	Kim	Kennedy	1951	Triumph	Thunderbird	M/C Solo	03ZH2	
P 0443	Amanda	Lloyd	1972	Holden	Belmont HQ	Sedan	RTY914	SMASA
0444	Rachael	Lavender	1967	Toyota	Corona	Sedan	REN598	SMASA
P 0445	Leslie	Tarnay	1978	Holden	Commodore	Sedan	SDV851	SCC
0446	Petrus	Schwerzel	1990	Mazda	MX5	Tourer	S334BDX	
0447	David	Kimber	1919	Ford	Model T	Buckboard	T06216	MTFCA
0448	Peter	Ruta	1960	Triumph	TR3A	Tourer - Sports	1960	TRR
0449	Kate	Hurst	1929	Buick	29/24	Roadster	BUIK29	AHR
0450	Stuart	Headland	1965	Morris	Mini	Sedan	RLZ098	
0451	Terry	Carney	1956	Morris	Minor	Saloon	HECTOR	ACC
P 0452	John	Newton	1974	Holden	Monaro LS	Coupe	LSHQ74	MCCSA
0453	David	Carlyle	1935	Buick	8-40	Sedan	XHK434	MtGVVCC
0454	Christopher	Neill	1978	Chrysler	Regal	Sedan	88339H	SCHMC
P 0455	Ian	Tooley	1957	Volkswagen	Type 1 Beetle	Sedan	S524CGW	GVVCVC
0456	Ian	Sargent	1916	GCS		M/C Solo	3271	AMC
0457	John	Lawson	1987	Porsche	911 Carrera	Coupe	1874H2	HDVVCDC
0458	Robin	Webb	1950	MG	TD	Roadster	JSE277	
0459	Cheryl	Cossich	1974	Volkswagen	Beetle	Sedan	DD190B	
0460	Pantelis	Kakkoufas	1956	Ford	Thunderbird	Coupe - Convertible	RAVEN56	
0461	John	Hall	1973	Holden	Premier	Sedan	62581H	GHMC
0462	Peter	Charlesworth	1990	Bentley	Mulsanne	Saloon	S177ADX	SCC
0463	Carolyn	Bull	1974	Holden	HQ	Panel Van	MYHQ308	
0464	Leslie	Farrell	1975	Lincoln	Continental Mark IV	Coupe	LINC75	FOCCSA
0465	Alice	Farrell	1978	Ford	TE Cortina Ghia	Sedan - Club	GHIA78	FOCCSA
0466	Damien	Jeffrey	1941	Ford	Jailbar	Pickup	S226CUI	
0467	Regan	Jeffrey	1978	MG	B	Tourer - Convertible	XX289F	GVVCVC
0468	Colin	Layzell	1970	Ford	XY GT	Sedan	RGT752	
0469	Andrew William	Gwinnett	1960	Chevrolet	Corvette	Coupe - Convertible	910	WACC
0470	Stuart	Vaughan-Williams	1949	MG	TC	Sports	VGU120	MGCCSA
0471	Kevin	Stephens	1971	Morris	Mini K	Sedan	RBL921	MiniCSA
E 0472	Matthew	Stead	1975	BMW	2002	Coupe	S058BMX	
0473	Barry	Weckert	1963	Holden	EH	Sedan	REH925	EHC
0474	Antony	Veale	1951	Jaguar	Mk V	Sedan	760	JDCA
0475	Antony	Veale	1966	Daimler	250	Sedan	DAIMLER	JDCA
0476	Steve	Koronis	1975	Holden	HJ	Utility	94893H	MMCC
0477	David	Peterson	1965	Morris	Mini	Sedan	MINI65	MiniCSA
0478	Greg	King	1967	Holden	HR Premier	Sedan	02115H	BDEHCC
0479	Frank	Tripodi	1974	Triumph	Stag	Coupe - Convertible	STAG11	StagOCSA
0480	Ron	Landers	1932	Ford	American Sprint	Racer	LANDERS1	
0481	Brian And Patricia	Lock	1975	Mercedes Benz	450SL	Convertible	SLA333	SACC
0482	Trevor	Pfeiffer	1966	Ford	Mustang	Sedan	CC315K	
0483	Tim	Spurdens	1983	Rover	SD1 3500SE	Sedan	VGJ560	RCCSA
0484	David	Seaton	1973	Volkswagen	Beetle	Sedan	RMD610	VECSA
0485	Andrew	Gower	1969	Jaguar	E Type	Coupe - Fixed Head	62544H	JCCVIC
0486	Ethan	Kasearu	1988	Volvo	240 GL	Sedan	UPR792	VCCSA
0487	Ethan	Kasearu	1989	Volvo	240 GL	Sedan	WKA083	VCCSA
0488	Peter	Oborn	1981	Alfa Romeo	Alfasud Ti	Hatchback	UDT356	AROCA
0489	Richard	Bastian	1974	Jaguar	XJ6L	Sedan	RMB022	MAPS
0490	Richard	Bastian	1923	Buick	23-4-35	Tourer	23BUICK	MAPS
0491	Steve	Mattschoss	1965	MG	B	Tourer - Sports	REJ454	MGCCSA
0492	Steve	Mattschoss	1976	Holden	Torana	Sedan	S112CDE	HTCSA
0493	Steve	Mattschoss	1971	Ford	Cortina	Sedan	ROD812	CCCSA
0494	Phil	Sparrow	1985	Lotus	Esprit	Coupe - Sports	ESPRIT	VWCSA
0495	Leila	Sturm	1966	Volvo	122	Sedan	RED122	VCCSA
0496	Brian	Worden	1965	Ford	Mustang	Coupe	SIXTI5	MOC
P 0497	Ian	Rick	1986	BMW	E28 525e	Sedan	UTV170	ACCMB
0498	Frank	Liemareff	1968	Mercedes Benz	200	Sedan	RMB200	MBCSA
0499	Michael	Smith	1966	Holden	HR Special	Sedan	SPE186	ACC
0500	Vikash	Mani	1968	Datsun	2000 Sports	Convertible	SLO311	DSOANSW

ENTRANT LIST

AWARD ENTRANTS



Concours d'Elegance



Preservation



Electric Conversion

Entry	First Name	Last Name	Year	Make	Model	Body Style	Registration	Club
0501	Merv	Murphy	1966	Ford	XP Falcon	Utility	136853	FOCCSA
0502	Peter	Cooper	1976	Jaguar	XJ6	Saloon	41606J	ACCAW
0503	Trevor	Byrne	1966	Ford	Mk1 Cortina GT	Sedan	MYGTM1	CCCCSA
0504	John	Symonds	1965	Chrysler	Valiant AP6	Sedan	VYB343	RVCC
0505	Andrew	Stone	1971	Ford	Falcon	Sedan	RGT246	
0506	Andrew	Stone	1980	Ford	Cortina	Sedan	TE	
0507	Ian	Diss	1937	AJS	37/18	M/C Solo	748KH	BHMCC
0508	Gregory	Quick	1971	Holden	Kingswood	Wagon	RUF870	WRNRCC
0509	Stephen	Krohn	1984	Holden	Statesman Caprice	Sedan	93372H	MMCC
0510	Mark	Stevenson	1963	Volvo	122s	Saloon - Sports	STV063	VCCSA
0511	Rhys	Elliott	1935	Pontiac	Straight 8	Sedan	PONT35	
0513	Billy	Cattanach	1942	Ford	Jailbar	Truck	0461H7	MD
0514	Jason	Polkinghorne	1966	Holden	HR	Sedan	POLX66	BVGMOC
0515	Richard	Cave	1968	Ford	Mustang	Fastback	SEC060	SMASA
0516	Kieran	Oshanessy	1979	Holden	HZ	Sedan	97779H	MD
0517	Brian	Herde	1922	Essex	Model A Wizard Smith Speedster (Replica)	Speedster	VFY751	CNC
0518	Tony	Walcroft	1969	Chevrolet	C3 Corvette	Coupe - Convertible	1969VET	CCSA
0519	Simon	Tothill	1966	Morris	1100	Sedan	UJH254	MCSA
0520	Robert	Howie	1934	Plymouth	PF	Roadster	PF1934	SCC
0521	Robert	Howie	1968	Ford	Fairmont	Sedan	RXT686	SCC
0522	Robert	Howie	1964	Holden	Premier	Sedan	AWSM64	SCC
0523	Liam	Brown	1964	Mercedes Benz	220S	Saloon	SLT927	MBCSA
0524	Adrian	Brown	1977	Mercedes Benz	450SL	Roadster	DD107F	MBCSA
0525	Anthony	Montecalvo	1985	Mazda	929	Hardtop	UCJ743	
0526	Russell	Langstreth	1981	Holden	Commodore SLE	Sedan	SLE088	CCHE
0527	Steve	Stevens	1975	Holden	Statesman Caprice	Sedan	SLK777	FX-HZHCC
0528	Richard	Jeffries	1967	MG	B	Roadster	MG1967	SCDSA
0529	Stephen	Hooper	1961	Holden	EK	Utility	REK610	FB-EKHCC
0530	Peter	Procenko	1957	Chevrolet	Belair	Hardtop	FIDDY7	SMASA
0531	Kim	Meyer	1975	Ford	F100	Pickup	SWZ509	FF100CA
0532	Rudy	Rygucki	1978	Chevrolet	Corvette	Coupe	DD123A	CCSA
0533	Davide	Bertoni	1967	Holden	HR	Station Wagon	WAGN67	CNC
0534	John	Goddard	1968	Sunbeam	Alpine Series 5	Roadster	ALPN68	SunOCSA
0535	Stephen	Mcdonald	1959	MG	A	Roadster	RZB001	MGCCSA
0536	Con	Arvanitakis	1977	Holden	Monaro GTS	Sedan	SXJ636	MCCSA
0537	Joe	Gavini	1976	Holden	HJ	Sedan	SFR754	GVVCVC
0538	Tania	Densley	1981	Leyland	Moke	Convertible	S669AKP	MiniCSA
0539	Greg	Lush	1990	Toyota	Camry	Sedan	VGY595	MiniCSA
0540	Randall	Rains	1964	Chrysler	AP5 Valiant	Sedan	RR1964	CCCCSA
0541	Richard	Fewster	1971	Ford	Escort Lotus Twincam	Sedan	1838	SCC
0542	Nicholas	Gray	1944	Ford	GPW	Utility	S055CLD	WVCG
0543	Wayne	Thomas	1967	Holden	HR	Sedan	HRSA67	HD-HRHCC
0544	Brad	Evans	1968	Datsun	1600	Sedan	RFD377	LMVEMC
0545	Jessica	Rogers	1972	Ford	Capri	Coupe	PLUM72	MCSA
0546	David	Arnold	1966	MG	B	Roadster	SEM866	RVCC
0547	John	Carlson	1956	Buick	Special	Hardtop	56BUICK	SMASA
0548	Daniel	Carpinelli	1963	Holden	EJ Special	Sedan	XKM528	
0549	Garry	Knight	1965	Morris	Cooper S	Sedan	137735	MK
0550	Seidel	Keith	1965	Morris	Cooper S	Sedan	BB485H	MK
0551	Gerry	Metschke	1974	MG	B GT	Coupe	SIX490	MiniCSA
0552	Foti	Katis	1971	Dodge	Charger	Coupe	DD717P	CMCC
0553	Andrea	Santin	1925	Nash	Roadster	Roadster	XKG209	VVCAASA
0554	Tony	Carpinelli	1985	Suzuki	MightyBoy	Utility	VOP659	
0555	Fiona	Mcfarlane	1971	Chrysler	Charger	Coupe	RLS265	CCCCSA
0556	Graeme	Pederson	1954	Holden	FJ	Sedan	FJ54	NDCC
0557	Damian	Grant	1969	Fiat	500	Sedan	RWW742	IMCC
0558	Robert	Riggs	1971	Holden	Brougham	Sedan	RWR520	FX-HZHCC
0559	James	Currie	1957	MG	Roadster	Coupe - Convertible	RLY936	
0560	Barry	Hedley	1966	Morris	Mini Cooper S	Sedan	472198	MK
0561	Ian	Moore	1938	Morris	8/40	Tourer	98051H	MRNSW
0562	Brian	Forth	1950	MG	TD	Tourer - Sports	RVO270	MGCCSA

ENTRANT LIST

AWARD ENTRANTS

C Concours d'Elegance

P Preservation

E Electric Conversion

Entry	First Name	Last Name	Year	Make	Model	Body Style	Registration	Club
0563	Brian	Forth	1924	Harley Davidson	FE Superspeed	M/C Outfit	HD1924	VVMCCSA
0564	Dennis	Jachmann	1968	Chevrolet	Impala	Sedan	WGB775	ACCMB
0565	Paul	Aikman	1966	Pontiac	Bonneville	Hardtop	BONN66	CNC
0566	Emma	Harrell	1989	Honda	Prelude	Coupe	S188AOP	
0567	Chris	Wiren	1963	Chrysler	Valiant S Series	Sedan	RPF670	CCCSA
0568	Darren	Shotton	1966	Ford	Mustang	Sedan	RHD347	MOC
0569	Jodie	Wiren	1979	Ford	LTD	Sedan	S501ADC	CCCSA
0570	Ron	Axford	1978	Holden	HZ	Utility	RHZ878	SMASA
0571	Anne-Marie	Pijanka	1971	Jaguar	XJ6 Series I	Sedan	XJ6JAG	JDCSA
0572	Con	Sarris	1970	Plymouth	Barracuda	Hardtop	CUDA1	CCCSA
0573	Danny	Sarris	1974	Chrysler	Chrysler	Sedan	SAN410	CCCSA
0574	Barry	Booth	1992	Subaru	Brumby	Utility	S610CTF	MRSA
0575	Ashton	Spangler	1953	Austin	A30	Sedan	375188	A7CSA
0576	Adrian	Bell	1983	Ford	TC Cortina XL	Sedan	RMK003	CCCSA
0577	Hugh	Davis	1944	Dodge	WC	Carrier - Weapons	79304M	MVPSSA
0578	Stephen	Bailey	1951	Triumph	5T	M/C Solo	TO055	COMCC
0579	Ian	Sweetman	1949	MG	TC	Roadster	VFK279	A7CSA
0580	Jim	Myhill	1966	Morris	1100	Sedan	WXI653	SCC
0581	Hamish	Pipe	1965	Wolseley	6/110 MkII	Sedan	110CO	VCCWA
0582	Jeffrey	Doecke	1980	Kawasaki	Ltd 250	M/C Solo	TFP896	
0583	Karl	Doecke	1956	BSA	Bantam	M/C Solo	S48BHC	
0584	Ian	Bradshaw	1980	Holden	Commodore HDT	Sedan	7188H8	
0585	Bill	Shearer	1974	Toyota	Celica	Coupe	SUO665	
0586	Robert	Veitch	1976	Holden	Monaro GTS	Sedan	HX76	MCCSA
0587	Annette	Brown	1966	Triumph	Herald	Coupe	RXU551	A7CSA
0588	George	Hobbs	1934	Triumph	Southern Cross Sports	Tourer - Sports	1735	AAAC
0589	Malcolm	Thomas	1975	Chevrolet	Sedan	Sedan	SYH000	PUMPS
0590	Wayne	Millman	1973	Volkswagen	Beetle	Sedan	XHG375	VCCWA
0591	Lamperd	Jason	1964	Ford	XM Futura	Hardtop	GP289	FCCSA
0592	John	Wallis	1940	Chrysler	Plymouth	Sedan	296613	
0593	Graham	Alderson	1926	Dodge	4	Tourer	RRR770	CRCASA
0594	Stephen	Swinden	1979	Holden	HZ Statesman SLE	Sedan	KITTI8	
0595	Gordon	Elley	1957	Jaguar	E Type	Coupe	S894CLH	
0596	David	Woodfield	1980	Holden	Commodore	Sedan	SPE605	
0597	Alfred	Vella	1980	Toyota	Celica	Coupe	8813H9	WestDHVC
0598	Michael	Buxallen	1928	Dodge	Fast 4	Tourer	WKU499	CRCASA
0599	John	Grech	1979	Ducati	900 Supersport	M/C Solo	SS1979	
0600	David & Angela	Rogers	1950	Jaguar	Mk V	Sedan	MK0005	JDCSA
0601	Natalie	Tompkins	1966	Ford	Mustang	Coupe	S842AGA	CNC
0602	Eric	Wallis	1973	Mercedes Benz	350SLC	Coupe - Fixed Head	RZG933	MBCSA
0603	David	Misan	1960	MG	A	Convertible	MGA1600	JCCC
0604	John	Fairburn	1966	MG	B	Convertible	SO66AGF	
0605	Ed	Liparts	1986	Subaru	Vortex	Coupe	UTU980	
0606	Luke	Ivanov	1963	Ford	Falcon	Sedan	XLENT1	BVFC
0607	Peter	Williams	1985	Ford	Laser	Hatchback	85LAZR	FOCCSA
0608	Graham	Weckert	1964	Holden	EH	Sedan	RAS252	BVHVC
0609	Nick	Goddard	1965	Land Rover	Series 2A	Hardtop	B64FR	PVCCTAS
0610	Bill	Byrne	1971	MG	B	Roadster - Sports	STD642	SMASA
0611	Lachlan	McDonald	1915	Ford	Model T	Tourer	CC782W	VetCCSA
0612	Kylie	Veitch	1971	Volkswagen	Superbug	Convertible	BRUCE27	
0613	Darrell	Eades	1974	International	3800	Prime Mover	XS57CA	
0614	Grant	Closter	1934	Chevrolet	Standard	Sedan	CLOG34	MVMC
0615	Ilario	Salerno	1958	Chevrolet	Corvette	Roadster - Sports	VETT58	WRNRCC
0616	Tim	Harper	1973	Triumph	TR6	Sports	RTR006	SCC
0617	Tim	Harper	1950	Bentley	Mk VI Special	Tourer - Drophead	220060	BDCSA
0618	Tim	Harper	1964	Bentley	S3	Saloon	2375	BDCSA
0619	Daniel	Moriarty	1956	Ariel	VB	M/C Solo	TF432	VVMCCSA
0620	Ted	Mumme	1912	Buick	28	Roadster	1704	MVECNT
0621	Mark	Seidel	1972	Ford	Capri	Coupe	REC178	EFV8C
0622	Allan	Plenty	1985	Holden	Commodore BT1	Sedan	UQD800	SAPHS
0623	Philip	Radoslovich	1968	Alfa Romeo	1750 GTV	Coupe	GTV105	AROCA
0624	Don	Gowland	1950	Chevrolet		Sedan	305937	VVCAA

ENTRANT LIST

AWARD ENTRANTS



Concours d'Elegance



Preservation



Electric Conversion

Entry	First Name	Last Name	Year	Make	Model	Body Style	Registration	Club
0625	Les	Wright	1976	Ford	F100	Utility	SBR643	
0626	William	Clarke	1966	Vauxhall	Viva	Sedan - Club	RNA779	SCC
0627	Andrew	Marr	1982	Datsun	Bluebird	Sedan	X15077	
0628	Jake	Hartmann	1970	Volkswagen	Buggy	Sedan	BUGGIE	
0629	Jenny	Warner	1980	Honda	Civic	Hatchback	SVC219	HonCC
0630	Mark	Warner	1967	Honda	S600	Convertible	RCS600	HonCC
0631	Dean	Edmunds	1962	Chrysler	Valiant S Series	Sedan	GHJ123	BVHVC
0632	Sean	Jamieson	1960	Morris	Minor	Sedan	MRMORRI	MCSA
0633	Colin	Taylor	1976	Holden	HJ	Sedan	SRR890	
0634	Mark	Van Roekel	1962	Holden	EJ	Sedan	VFL993	AtujMCC
P 0635	Trevor	Turton	1975	Holden	HJ	Utility	SBG212	BVGMOC
0636	Robin	Regester	1946	Dodge	D24 Custom Sedan	Sedan	00345M	CRCVIC
0637	Peter	Brown	1969	Land Rover	Light Weight Air Portable	Utility	S896BOW	LRRSA
0638	Scott	Whitehead	1980	Ford	Falcon XD	Sedan	SZV001	SMASA
0639	Russell & Liz	Driver	1925	Buick		Tourer	350SE	
0640	Richard	Boruch	1964	Holden	EH	Station Sedan	116142	SMASA
0641	Bobbi	Hutchins	1969	MG	B	Tourer	XEP185	MGCCSA
P 0642	Michael	Keogh	1922	Ford	Utility	Buckboard	XB622N	HCVCA
0644	Michael	Quinn	1974	Rambler	Matador	Coupe	RVR565	WVCC
0645	Elizabeth	Murphy	1935	Chrysler	Plymouth	Sedan - Touring	YY276U	HCVCA
P 0646	Christopher	Hutchins	1925	Chevrolet	Utility	Utility	XA479A	HCVCA
P 0647	Nathan	Keogh	1927	Chevrolet	Utility	Buckboard	S112ASG	HCVCA
0648	Rod	Niejalke	1928	Ford	Model A	Tourer	DON001	MAFCSA
0649	Bruce	Lucking	1978	Lincoln	Continental	Coupe	SLC078	FCCSA
0650	Allan	Britcher	1984	Jaguar	XJS	Coupe	XJSC84	JDCSA
0651	Martin	Ross	1949	Vauxhall	Caleche	Tourer - Convertible	S262ANI	VOCASA
C 0652	Malcolm	Adamson	1936	SS Jaguar	Airline	Saloon	9114	JDCSA
0653	Philip	Measday	1970	Ford	XW	Sedan	RGS470	SMASA
0654	Graham	Williams	1962	Chrysler	Valiant S Series	Sedan	WMW817	HMVCSA
0655	Nick	Fordham	1989	BMW	K1	M/C Solo	BMWK01	AtujMCC
0656	Don	Crouch	1969	Jaguar	E Type Series 2 +2	Sedan - Club	XB434A	JDCSA
0657	John	Hoy	1971	Rover	P6B	Sedan	27476H	
0658	Daniel	Pitt	1972	Volkswagen	Beetle	Saloon	SFD717	MRSA
0659	Karen	Mead	1991	Nissan	Silvia S13	Coupe	SLV013	SMASA
0660	Owen	Mcardle	1925	Chevrolet	Superior K	Tourer	51330	VVCAASA
0661	Daryl	Steed	1964	Holden	EH	Sedan	225064	
0662	Ian	Potts	1963	Chrysler	AP5	Sedan	S527BGU	
0663	Trevor	Sinclair	1967	Prince	GTB	Sedan - Touring	S967ADC	PSGTR
0664	Danielle	John	1976	Holden	HX	Sedan	SYT177	
0665	Graham	O'Neill	1969	Alfa Romeo	1750 GTV	Coupe	RUW112	AtujMCC
0666	Clive	Spreadbury	1978	MG	B	Convertible	MGB777	SpriteCSA
C 0667	Lew	Toop	1963	Holden	EJ Premier	Sedan	269445	SCC
0668	Brendon	Hampton	1947	Bennett & Wood	Acme	M/C Solo	S00AUA	
0669	Richard	Kingston	1972	Chrysler	Valiant Charger	Coupe	693XWQ	
0670	Michael	Dodd	1989	Harley Davidson	FXSTC Softail	M/C Solo	THL440	
0671	Zonda	Weckert	1970	MG	B	Convertible	ZONDA1	MGCCSA
0672	Rod	Crawford	1973	Chrysler	VJ Charger	Coupe	RHC049	SCC
0673	Rod	Crawford	1915	Ford	Model T	Roadster	YP1915	MTFCA
0674	Rod	Watson	1947	International	KBS 7	Truck - Tray Top	240377	AHMRC
0675	Ian	Mcperson	1988	Holden	VL Calais	Station Wagon	VLHDT8	
0676	Ronald	Janusaitis	1968	Morris	1100	Sedan	ROV916	
0677	Sebastian	Altamura	1982	Mitsubishi	Sigma	Sedan	URH065	
0678	Alan	King	1988	Toyota	Celica	Hatchback	VXT425	
0679	Arthur	Saridakis	1971	Ford	Galaxie LTD	Coupe	BADAS	CNC
0680	Bruce	Brody	1926	Rugby	M	Buckboard	7464	WMHVS
0681	Kirsty	Whitten	1958	Holden	FC	Sedan	0403H2	BDEHCC
0682	Tim	Stock	1983	Datsun	Bluebird	Station Wagon	SII910	
0683	Greg	Heidrich	1962	Chrysler	Royal	Sedan	XSP847	
0684	Lloyd	Laing	1947	BSA	XB31	M/C Solo	TEJ425	AtujMCC
0685	Dragan	Miletic	1986	Toyota	Corolla	Hatchback	VPY337	
0686	John	Van Ruth	1989	Volvo	740 GLE	Wagon	RJV740	VCCSA

ENTRANT LIST

AWARD ENTRANTS

C Concours d'Elegance

P Preservation

E Electric Conversion

Entry	First Name	Last Name	Year	Make	Model	Body Style	Registration	Club
0687	Anne	Bolst	1989	Toyota	Celica White Lightning	Hatchback	AB0000	
0688	Peter	Ryan	1923	Hudson	Essex	Tourer - Convertible	XD429F	
0689	Brian	Mcgaffin	1958	Buick	Special	Sedan	2552H2	MMCC
P 0690	Graham (Joe)	Geue	1965	Ford	XP Falcon	Utility	581760	SACC
0691	Nick	Rotolo	1986	Nissan	EXA	Sedan	S538BFY	
0692	Nicholas	Rotolo	1976	Holden	Kingswood	Sedan	SPYDA6	
0693	Colin	Smith	1963	MG	B	Tourer - Convertible	MYMG63	MGCCSA
0694	David	Argent	1970	Ford	Fairlane	Sedan	RZD777	FCCSA
0695	Daryl	Pilmore	1972	Holden	HQ	Utility	RXT 024	SMASA
0696	Kym	Woolford	1950	Holden	48-215 FX	Sedan	FX	A7CSA
0697	Mark	Hoad	1950	Land Rover	Series 1	Utility	DD049F	LRRSA
0698	Ben	Fordham	1964	Mercedes Benz	220S	Saloon	S272CGZ	
0699	Harry	Moate	1970	Holden	HT	Sedan	RTH714	PUMPS
0700	Brenton	Schulz	1978	Holden	HZ	Sedan	SDF596	AAAC
0701	Alan & Tracy	Rayner	1963	Jaguar	Mk II	Saloon	CATMK2	BVHVC
0702	Jeffrey	Fisher	1959	Morgan	4/4	Tourer	S629CCJ	SCC
0703	Ian	Thorpe	1952	MG	TD	Tourer - Convertible	MGTG0	SCC
0704	Neville	Eltze	1971	Ford	Fairmont	Sedan	82098H	WMHVS
0705	James	Carter	1917	Dodge	Model 30	Roadster	SCCSA1	SCC
0706	Chris	Brine	1959	Austin Healey	Sprite Mk I	Tourer	BUGEYE	SpriteCSA
C 0707	Mark	Randell	1929	Morris	MC1428	Tourer	DD812S	AHMRC
0708	Mark	Randell	1927	Morris	MC1463	Roadster	UJH530	AHMRC
0709	Craig	Brocklehurst	1970	Plymouth	Barracuda	Coupe	S035BVV	WRNRCC
0710	Jonathan	Griggs	1970	Morris	1300	Sedan	S070BCT	
P 0711	Dale	Tonkin	1970	Ford	XY	Sedan	RVB389	FCCSA
0712	Garry	Gailey	1955	Holden	FJ	Sedan	RFJ138	GFX-FJCSA
0713	Daryl & Maree	Pendlebury	1992	Mercedes Benz	180E	Sedan	4573H2	SHVCVC
0714	Jock	Mcleod	1966	Holden	HR	Sedan	OZZY66	MCSA
0715	Gregory	Northey	1970	Holden	HG	Utility	RGO243	
0716	Brian	Dearman	1979	Holden	HZ	Station Wagon	904	VVCAASA
0717	Graham	Daley	1969	Holden	HB Torana	Coupe	RFM740	HTCSA
0718	Warren	Beames	1964	Holden	EH	Panel Van	WXE621	PLAC
0719	Marie	Keneally	1948	Packard	Straight Eight	Sedan	WZP818	
0720	Terrence (Terry)	Jones	1946	Dodge	D24C	Sedan	WMX624	CRCASA
0721	Philip	Erickson	1967	Dodge	AT4	Truck	RPE669	CRCASA
0722	Philip	Erickson	1947	Morris	M8	Van	ETSA50	
0723	Alexander	Hames	1935	Dodge	Tourer	Utility	WEC326	CRCASA
0724	Bailey	Hames	1975	Leyland	Moke	Convertible	SRV800	CRCASA
0725	Mark	Biagi	1972	Chrysler	Charger RT E49	Coupe	RTT049	CCCSA
0726	Chris	Weckert	1956	Volkswagen	Beetle	Sedan	S503CLE	VECSA
0727	Judith	Baker	1969	MG	B MK II	Coupe	SYG537	
0728	Colin	Dennis	1977	Chevrolet	Corvette	Coupe	XB451G	CCSA
0729	Lawrie	O'Connor	1954	Vauxhall	E	Tourer	47186H	VOCANSW
0730	Mark	Johnston	1962	Pontiac	Laurentian	Sedan	19643	VPVMC
0731	Mark	Van Loenen	1928	Pontiac	Tourer	Tourer	ROI928	GVVCVC
0732	Mark	Van Loenen	1958	Morris	Minor	Sedan	VHX357	GVVCVC
0733	Nigel	Steel Scott	1923	Rolls Royce	20	Tourer	SCO020	SCC
0734	Nigel	Steel Scott	1954	Aston Martin	DB 2/4	Coupe	SCO024	SCC
0735	Nigel	Steel Scott	1922	Rolls Royce	20	Roadster	SCO022	SCC
0736	Nigel	Steel Scott	1925	Alvis	SC 12/50	Roadster	SCO025	SCC
0737	Nigel	Steel Scott	1904	Speedwell	10	Rear Entrance	SCO004	VetCCSA
0738	Hans	Vormelker	1963	Volkswagen	Beetle	Tonneau	106493	VWCSA
0739	David	Searles	1927	Chevrolet	Capitol	Saloon	S895BOE	ZZOC
0740	David	Searles	1956	Ford	Mk 1 Zephyr	Truck - Light	S896BOE	ZZOC
0741	Antony	Scammell	1970	Ford	Capri	Coupe - Convertible	GT3000	CCCSA
0742	Stephen	Mulady	1967	Holden	HR	Coupe	1HOLDEN	EHHC
0743	Stephen	Mulady	1969	Ford	Mustang	Utility	FAST351	EHHC
0744	Carmen	Wright	1961	Triumph	Herald	Fastback	S311BTJ	EHHC
0745	Stephen	Mulady	1963	Holden	Herald	Coupe - Convertible	SPECIAL	EHHC
0746	Richard	Barwa	1968	Volkswagen	Country Buggy Type 197	Sedan	RAZ477	VECSA
0747	Michael	Holland	1976	Jaguar	XJ12	Tourer	UJE967	BVRC
0748	Colin	Redmond	1955	Renault	4CV (750)	Sedan	UDU121	CAF

ENTRANT LIST

AWARD ENTRANTS



Concours d'Elegance



Preservation



Electric Conversion

Entry	First Name	Last Name	Year	Make	Model	Body Style	Registration	Club
0749	Roger	Bruys	1968	Ford	Mustang	Convertible	RPS390	MOC
0750	Daniel	Adamson	1946	Jaguar	Mk IV	Saloon - Sports	233160	JDCSA
0751	Grant	Laughton	1926	Chrysler	70	Tourer	SRJ715	BVFC
0752	Renato	Di Stefano	1977	Volkswagen	Kombi	Utility	VW1977	AROCA
0753	Ross	Urquhart	1948	Wolseley	14HP	Sedan	00119	CCCT
0754	Fred	Marshall	1971	Holden	HG Kingswood	Sedan	RNY542	
0755	Richard	Howard	1952	Bedford	OL	Truck	RFB007	CMRC
0756	Lindsey	Howard	1956	Dodge	Kingsway Coronet	Sedan	S890AYI	CMRC
0757	Martin	Stockley-Smith	1946	Mercury	Eight	Sedan	17644J	
0758	David	Daly	1979	Holden	HZ	Utility	STZ579	FX-HZHCC
0759	Justin	Dix	1977	Holden	Belmont	Van	SHN814	
0760	Brian	Davis	1976	Datsun	260Z	Coupe	ZZZ260	FOCCSA
0761	Fred	Butcher	1977	Daimler	XJC	Coupe	MICH17	JDCSA
0762	Dennis	Lorenz	1967	Holden	HR	Sedan	RHC087	FB-EKHCC
0763	Dennis	Lorenz	1971	Ford	XY	Sedan	RTT311	FCCSA
0764	Jamie	Lorenz	1962	Holden	EK	Sedan	S881AII	FB-EKHCC
0765	Clement	Lasscock	1951	Austin	A90 Atlantic	Convertible	ROKN51	A7CSA
0766	Jordan	Nockolds	1976	Datsun	260Z 2+2	Hatchback	SMC063	
0767	Luke	Bossy	1973	Bentley	T1	Saloon	RRS675	TOYOC
0768	Warren	Stocker	1974	Rolls Royce	Silver Shadow II	Sedan	ROLLS	
0769	Vince	Lopizzo	1980	Alfa Romeo	Alfasud	Coupe	SUD080	AROCA
0770	Robert	Billing	1970	Morris	Mini	Sedan	BRICK3	HBSA
0771	Jason	Behrndt	1978	Alfa Romeo	Alfasud	Coupe	SUD	
0772	Geoff	Hillier	1977	Yamaha	DT175 Enduro	M/C Solo	S47BPP	
0773	Peter	Jasper	1955	Holden	FJ	Utility	S387AWO	SEFX-FJCC
0774	Jessica	Kruger	1977	Volkswagen	Kombi	Microbus	DPK277	MCCSA
0775	Ian	Briggs	1966	Chrysler	VC Valiant Regal	Sedan	RED536	
0776	Ken	Macgregor	1981	BMW	R100CS	M/C Solo	81BMW	
0777	Dave	Chapman	1949	Norton	ES2 500	M/C Solo	26LH6	
0778	Les	Salmon	1943	Harley Davidson	WLA	M/C Solo	26LH	
0779	Alex	Kalfas	1966	Harley Davidson	FLH	M/C Solo	S30BMR	
0780	Craig	Warner	1949	Bedford	PC	Utility	RKG277	
0781	Richard	Neale	1971	Holden	HQ	Coupe	RVL675	MCCSA
0782	Craig	Warner	1967	Peugeot	204	Sedan	PUG204	CAF
0783	Frank	Molnar	1969	Chrysler	Valiant	Hardtop	RVF469	CCCSA
0784	Corey	Giglio	1966	Chrysler	VC Valiant	Sedan	277845	CCCSA
0785	Paul	Smulders	1929	Chevrolet	Roadster	Roadster - Sports	108011	WVCCC
0786	Luke	Caldwell	1956	Jensen	541	Saloon - Sports	541	
0787	Craig	Nixon	1965	Prince	Skyline GT	Sedan	S144BRJ	MAPS
0788	David	Fuller	1967	Holden	HR	Sedan	GMH1967	MCCSA
0789	Constantinos	Trakas	1969	Holden	Torana	Sedan	SPM255	
0790	Tony	Mckenzie	1982	Holden	TF Gemini	Sedan	STF582	TMC
0791	Russell	Mcmurray	1966	Ford	Mustang	Convertible	RMS066	
0792	Olivia	Smith	1960	Morris	Minor 1000	Sedan	WNN345	MMCCSA
0793	Melanie	Niscioli	1971	Ford	ZD Fairlane	Sedan	UKT347	SMASA
0794	Ryan	Garnett	1950	Riley	RM	Roadster	S708CCD	RMCSA
0795	Jack	Cave	1971	Volkswagen	Beetle	Sedan	S753CNI	SMASA
0796	Paul	Carter	1953	Plymouth	Cranbrook	Coupe - Convertible	S355AVR	SMASA
0797	David	Matthews	1940	Chevrolet	Ridemaster Deluxe	Hearse	2498	AHMRC
0798	David	Matthews	1964	Holden	EH Premier	Sedan	323075	AHMRC
0799	Ed	Telke	1938	Dodge	MK Stack	Truck - Tray Top	S374CGA	
0800	Tony	Conroy	1973	Citroën	DS	Sedan	GIGI73	CitCSA
0801	David	Ward	1949	MG	YT	Tourer	YOO378	MTFCA
0802	Frank	Vandenbroek	1969	Ford	Mustang	Fastback	URT978	
0803	Daniel	Falco	1973	Ford	Falcon	Coupe	RZP927	SMASA
0804	Mark	Stevens	1970	Holden	LC Torana	Sedan	RKH256	
0805	Ron	Jenkins	1973	Toyota	Corona	Sedan	RMA246	VCASA
0806	David	Hurst	1962	Chrysler	Valiant S Series	Sedan	SSV062	R&SSVCC
0807	Ralph	Brudenell	1967	Prince	Skyline GT	Sedan	64111H	PSGTR
0808	Nick	Keen	1974	Maserati	Merak	Coupe - Sports	XB164G	SCC
0809	Mitchell	Gavini	1984	Toyota	KE70 Corolla	Wagon	RKE084	

ENTRANT LIST

AWARD ENTRANTS

C Concours d'Elegance

P Preservation

E Electric Conversion

Entry	First Name	Last Name	Year	Make	Model	Body Style	Registration	Club
0810	Len	Jeffries	1958	Chevrolet	Viking 60	Tipper	LJEFFRIES1	
0811	Len	Jeffries	1946	Pontiac	Chieftain	Sedan	XLN778	PontCC
0812	Stuart	Bowshall	1974	Ford	Cortina TC	Sedan	SNP188	MTFCA
0813	Dale	Halling	1959	Austin Healey	Sprite Mk I	Tourer - Convertible	SNT113	SpriteCSA
0814	Nate	Fuss	1969	Toyota	Corona	Sedan	DD051K	
0815	Tony	De Bari	1969	Ford	Cougar	Convertible	MC1969	CMCC
0816	Peter	Flavel	1988	Jaguar	XJ40	Sedan	XRC792	GVVCVC
0817	Tristan	Kleinig	1976	Holden	HJ 1 Tonne	Utility	SBM128	
0818	Glenn	Bennett	1928	Ford	A	Tourer	7106	VDC
0819	Alan	Mcdonald	1947	Ford	Jailbar	Pickup	PKUP47	EFV8C
0820	Ian	Voysey	1913	Ford	Model T	Tourer - Convertible	S988AIJ	VetCCSA
P 0821	Peter	Kruger	1992	Mercedes Benz	600SL	Convertible	DPKV12	SCC
0823	Jarrad	Odgers	1968	Morris	Mini-Matic	Sedan	BB692A	MiniCSA
0824	Rowan	Valentine	1939	Packard	1708	Limousine	PKRD39	
0825	Rowan	Valentine	1964	Holden	EH	Sedan	S525CJL	
0826	Antony	King	1928	Ford	A	Phaeton	XA743F	
0827	David & Wendy	Lithgow	1948	Jaguar	Mk V	Coupe - Drophead	183160	JDCSA
0828	Tim	Shepherd	1968	Jaguar	340	Sedan	EHM460	
0829	Tim	Shepherd	1965	Jaguar	E Type	Coupe	ZUG219	
0830	David	Gaspar	1965	MG	B	Tourer	SSW022	MGCCSA
0831	Stephen	King	1965	Prince	Skyline GT	Sedan	09579H	PSGTR
0832	Peter	Friend	1964	Rover	P5 3 ltr	Coupe	ROVR64	RCCSA
0833	Michael	Nilsen	1965	Ford	XP Falcon	Coupe	DEVL65	
0834	Sharon	Stanbury	1954	Chevrolet	Bel Air	Sedan	411416	
0835	Wayne	Champion	1972	Alfa Romeo	2000 GTV	Coupe	S147CEX	AROCA
0836	Phillip	Luff	1950	Land Rover	Series 1	Utility	ROA989	GVVCVC
0837	Murray	Broad	1977	Mercedes Benz	350SLC	Coupe	VFO380	AROCA
0838	Jodie	Stopp	1984	Toyota	Corolla CS	Sedan	ROLA84	WACC
0839	Gordon	Gray	1978	Chrysler	CM Regal SE	Sedan	SCX318	CCCSA
0840	Benjamin	Dujmovic	1990	Holden	Commodore SS	Sedan	SSS090	CCHE
0841	Rod	Prime	1966	Holden	HR Premier X2	Sedan	2232	CCSA
0842	Anthony & Joyce	Mayo	1927	Chevrolet	Capitol	Tourer	AMAYO	
0843	Mark	Drechsler	1972	Yamaha	LS3	M/C Solo	OLDEM8	VJMC
0844	Colin	Beames	1979	Holden	HZ	Ambulance	SHZ043	FX-HZHCC
0845	Tom	Gowen	1969	BSA	A65 Lightning	M/C Solo	S69BMK	NMCC
0846	Scott	Knoblauch	1955	Holden	FJ	Special	SURF55	48-FJHCSA
0847	Michael	Rollinson	1984	Toyota	Celica Supra	Coupe	84SUPRA	
0848	Richard	Ramsey	1976	Datsun	260Z	Coupe	UGA692	NDCC
0849	Andrew	Lyndon	1984	Holden	Camira SL	Sedan	SLK398	SMASA
0850	Bob	Kretschmer	1939	SS Jaguar	1.5 L	Sedan	SS1939	JCCC
0851	Celena	Tucker	1970	Volkswagen	Beetle	Sedan	DD514A	VWCSA
0852	Brenton	Spangler	1972	Volkswagen	Kombi Campervan	Microbus	RDW483	A7CSA
0853	David	Dunk	1923	Levis	Popular	M/C Solo	DUNK3	VVMCCSA
0854	David	Dunk	1984	Kawasaki	KR250A	M/C Solo	YYN391	VVMCCSA
0855	David	Dunk	1950	Ariel	500 Red Hunter	M/C Solo	S48BJL	VVMCCSA
0856	David	Evans	1951	BSA	A10	M/C Solo	S31AWX	MGCCSA
0857	Joshua	Natt	1973	Leyland	Mini	Sedan	RZR916	
0858	Philip	Ivanov	1959	Holden	FC	Utility	YESA59	FE-FCHCCSA
P 0859	Clive	Berry	1955	Austin	A30	Sedan	460837	A7CSA
0860	Beverley	Hewison	1972	BMW	2002	Sedan	SED54B	BMWDCSA
0861	Neil	Palmer	1924	Dodge	Tourer	Tourer	36887	CRCSA
0862	Peter	Gill	1977	Holden	HJ	Ambulance	S549BGW	HOC
0863	Peter	Gill	1949	BSA	600cc	M/C Outfit	S60BRA	BSAOA
0864	Peter	Gill	1971	Holden	HJ	Ambulance	RGU638	HOC
0865	Ivan	Cooke	1970	Jaguar	XJ6 4.2	Saloon	RKL700	JDCSA
0866	Bruce & Jenny	Collins	1946	Ford	Mercury	Sedan	61997D	EFV8CNSW
0867	Ashley	Lavingdale	1973	Holden	LJ Torana	Coupe	RLG845	HTCSA
0868	John	Frangiosa	1967	Ford	Mustang	Convertible	MU1967	GVVCVC
0869	Jacqui	Dickin	1972	Chrysler	Charger	Coupe	30052H	
0870	Chris	Kennedy	1972	Leyland	Moke	Tourer	MOKE42	GVVCVC
0871	Brad	Mawet	1974	Holden	Statesman	Sedan	SNE763	JCCC
0872	Alexander	Visintin	1976	Suzuki	LJ50	Convertible	140293	
0873	Stephen	Andersen	1971	Ford	Capri	Coupe	94734H	CapriCC

ENTRANT LIST

AWARD ENTRANTS



Concours d'Elegance



Preservation



Electric Conversion

Entry	First Name	Last Name	Year	Make	Model	Body Style	Registration	Club
0874	Anthony	Ampt	1964	Jaguar	Mk II	Saloon	JBY622	
0875	Roger	Keane	1962	Holden	EJ	Station Sedan	172557	AAAC
0876	Graham	Warner	1952	Chevrolet	52-1016	Sedan	109589	MTFCA
0877	Graham	Warner	1925	Hupmobile	E1	Tourer	RBZ895	MTFCA
0878	Keith	Williams	1968	Triumph	TR5	Convertible	TR5000	TSOASA
0879	Kevin	Kleinig	1973	Holden	HQ	Sedan	RUM801	BVHVC
0880	David	Bassett	1954	Morris	Sedan	Sedan	S037BLP	MCSA
0881	Stephen	Lambert	1968	Morris	Mini	Sedan	WTK682	
0882	Neil	Sommers-Cain	1976	Cadillac	Calais	Coupe	DD492H	NCCA
P 0883	Andrew	Cadd	1980	Ford	XD Falcon S Pack	Sedan	SEG416	MOC
0884	Rob	Denton	1927	Ford	Model T	Roadster	FORD27	NARC
0885	John	Eastick	1972	Volkswagen	Superbug 1600	Sedan	REA088	MTFCA
0886	Richard	Wilson	1971	Triumph	TR6	Coupe	26477H	SHVCVC
0887	Graeme	Henderson	1963	Holden	EH	Sedan	25131H	BDEHCC
0888	Adam	Furniss	1974	Ford	XB Falcon GT	Sedan	CH5971	MRDMC
0889	Brendon	Lyons	1976	Morris	Mini Cooper S	Sedan	S647AJU	MiniCSA
0890	Diane	Burpee	1964	Ford	Anglia 105E	Coupe	VHU356	A7CSA
0891	Diane	Burpee	1946	Chevrolet	Stylemaster	Sedan	FREDS46	A7CSA
0892	Craig	Chidley	1987	Holden	VL Commodore Executive	Wagon	OJE170	SMASA
0893	Giles	Willing	1968	Morris	Mini Deluxe	Sedan	83969H	
0894	Kay	Nash	1974	Leyland	Mini	Sedan	SAB758	GVVCVC
0895	Craig	Harding	1967	Chrysler	Valiant	Sedan	VC0225	SMASA
0896	Stacy	Taylor	1977	Pontiac	Trans AM	Coupe	370HLI	
0897	John	Lucas	1951	Cadillac	Fleetwood 60	Sedan	WON184	CLCA
0898	Kenneth	Nelson	1959	Austin	A105 Westminster	Sedan	170987	A7CSA
0899	Greg & Jo	Mawet	1969	Jaguar	420G	Saloon	RKF438	JCC
P 0900	David	Webster	1961	Morris	Minor	Sedan	MINOR0	MMCCSA
0901	John	Parr	1977	Chrysler	SE Regal	Sedan	17825H	
0902	Jack	Winston	1966	Morris	Mini Deluxe	Sedan	UCW089	HMVCSA
0903	Wayne	West	1953	Holden	48-215 FX	Sedan	X48215	48-FJHCSA
0904	Tessa	Sargent	1930	Ariel	E	M/C Solo	4360	AMC
0905	Daniel	Sargent	1912	Triumph	Roadster	M/C Solo	3264	AMC
0906	Mark Anthony	Brady	1967	Ford	Falcon XR	Sedan	RWD148	SCC
C 0907	John	Karetsian	1988	Nissan	Skyline R31	Sedan	VLAKA1	
0908	Cosmo	Monterosso	1949	Holden	48-215 FX	Sedan	149	48-FJHCSA
0909	Anthony	Pettinau	1969	MG	B	Coupe - Convertible	BB390P	CCCSA
0910	Christina	Pettinau	1975	Chrysler	VJ Charger	Coupe	S999BGO	CCCSA
0911	Lisa	Pettinau	1976	Fiat	128	Sedan	SBY266	CCCSA
0912	Tim	Hearse	1969	Chevrolet	Impala SS	Convertible	S069ASV	PCCSA
0913	Tim	Hearse	1929	Plymouth	Tourer	Tourer - Convertible	VG483	PCCSA
0914	Tim	Hearse	1919	Essex	Pacific	Tourer - Convertible	1919ESSEX	PCCSA
0915	Martin	Bradshaw	1965	Datsun	U320	Utility	RWK485	CCCSA
P 0916	Dave	Kavanagh	1992	Volvo	940	Sedan	XD139L	SMASA
P 0917	Rob	Kavanagh	1962	Holden	EK	Sedan	EK0620	CNC
0918	Paul	Frieske	1967	Volkswagen	Beetle	Sedan	RJJ058	GVVCVC
0919	Andrew	Black	1969	Plymouth	Road Runner	Hardtop	RUN383	CCCSA
0920	John	Penley	1979	Datsun	280ZX	Coupe	WCH912	
0921	Glen	Verrall	1932	Austin	7	Tourer	S401COU	A7CSA
0922	Adrian	Watts	1927	Douglas	EW350CC	M/C Solo	WATTS27	A7CSA
0923	Dan	Penley	1966	Dodge	Phoenix	Sedan	VFD868	CCCSA
0924	Mark	Gardiner	1925	Dodge	L	Utility	S511BLW	
0925	Tarsha	Macintyre	1988	Toyota	Celica	Coupe	GT4165	SMASA
0926	Brenton	Mclean	1967	Mercedes Benz	230	Sedan	RSK545	MBCSA
0927	Graham	Tonkin	1933	Ford	V8	Roadster	S041BRB	EFV8C
0928	Ron	Orchard	1967	Ford	Fairlane	Sedan	RWO102	FOCCSA
0929	Warren	Kay	1987	Porsche	928	Coupe	7344H9	
0930	Michael	Arahill	1971	MG	B	Convertible	MG5555	MRNSW
0931	Peter	Olsen	1972	Jaguar	XJ6	Sedan	YOZ99B	
0932	Young	Roger	1972	Ford	Mustang	Convertible	S323BLZ	PCCSA
0933	Robert	Williams	1973	Cadillac	Eldorado	Convertible	CADI73	CCASAR
0934	Darren	Calleja	1964	Holden	EH	Sedan	SEH464	EHHC
0935	Ryan	Penley	1976	Toyota	FJ45	Utility	URU410	

ENTRANT LIST

AWARD ENTRANTS

C Concours d'Elegance

P Preservation

E Electric Conversion

Entry	First Name	Last Name	Year	Make	Model	Body Style	Registration	Club
0936	Richard	Daymond	1954	Holden	FJ Special	Sedan	26180H	MMCC
0937	Jim	Seretis	1974	Volkswagen	Karmann Ghia	Coupe	S596BKN	VECSA
0938	Nigel	Davies	1981	Yamaha	XV1000RH	M/C Solo	WB204	
0939	Darryl	Badcock	1960	Triumph	Herald	Coupe	S338CVS	
0940	Ronald	Lane	1975	Jaguar	XJ6 Series II LWB	Saloon	SYE696	JDCSA
0941	Bruce	Colwell	1937	BSA	G14	M/C Outfit	TB268	BSAMOCSEA
0942	Danny	Galliver	1980	Mercedes Benz	300TD	Station Wagon	URK107	SMASA
0943	John	Veale	1949	BSA	C11	M/C Solo	TGL174	BSAMOCSEA
0944	Robin	St John Sweeting	1969	Volvo	144	Sedan	RNN299	VCCSA
0945	Dodd	Gary	1964	Austin Healey	Sprite	Roadster	RHS1964	SCC
0946	Dean	Ottanelli	1961	Ford	Falcon	Sedan	ROD061	
0947	Paul	Tsoundarou	1979	Mercedes Benz	280SE	Sedan	UJR445	ACC
0948	Nardine	Giles	1952	Morris	Minor Series MM	Sedan	SMM052	MRSA
0949	Sean	Johnson	1974	Ford	Falcon GT	Hardtop	SBB666	
0950	Dylan	Pedler	1965	Ford	Falcon	Utility	RVY309	RCC
0951	Craig	White	1960	Morris	Minor 1000	Sedan	308189	MRSA
0952	Brenton	Woolston	1979	Holden	HZ	Utility	SON448	SCC
0953	Brodie	Chuch	1976	Ford	XB Falcon GT	Sedan	JG3351	SMASA
0954	Michael	Kelman	1938	Chrysler	C18	Sedan - Touring	XLLO52	SICC
0955	Rodney	Twiss	1974	Rolls Royce	Silver Shadow	Sedan	WHI886	SCC
0956	Barry	Martin	1919	Ford	Model T	Buckboard	TF1919	AHMRC
0957	Malcolm	Grossmann	1975	Ford	Escort	Sedan	RSS160	SMASA
0958	Lisa	Dallow	1970	MG	B MkII	Tourer - Convertible	BARBI	MGCCSA
0959	Ross	Anderson	1977	Holden	HZ Premier	Sedan	29958H	WestVHCC
0960	Dean	Bassi	1975	Holden	Monaro LE	Coupe	IOB899	MCCSA
0961	Margaret	Daish	1949	MG	TC	Convertible	MYMG49	
0962	Fiona	Pettinau	1967	Chrysler	VC Valiant	Sedan	RKK702	CCCSA
0963	Glen	Keast	1972	Holden	LJ Torana	Sedan	S378CKO	HTCSA
0964	Andrew	Traeger	1983	Mazda	RX 7	Coupe	XC905L	SMASA
0965	Andrew	Chandler	1960	Morris	Minor	Sedan	MIL160	MCSA
0966	Ian	Proude	1971	Ford	XY GT HO	Sedan	RHO071	PLAC
0967	Grant	Frahm	1965	Ford	Mustang	Coupe - Convertible	US1965	RVCCC
0968	Roberto	Formato	1970	Mazda	Cosmo Sport	Coupe - Sports	RDR309	AROCA
0969	Michael	Williams	1972	Ford	Galaxie	Sedan	RYD784	
0970	Chris	Sheffield	1975	Triumph	Stag	Convertible	STG075	CNC
0971	James	Heidrich	1926	Chevrolet		Truck	S916AAE	
0972	David	Zuchelt	1971	Chevrolet	Stingray	Coupe - Convertible	VETTE71	SCC
0973	Bernard	Papps	1985	Holden	VK	Sedan	UCC869	FX-HZHCC
0974	John	Neldner	1991	Toyota	Celica GT4 (E-ST185-BLMVZ)	Hatchback	DD899P	
0975	Mario	Siciliano	1968	Daimler	DS420	Limousine	1745SV	JDCSA
0976	David	Adler	1977	Ford	Falcon	Sedan	STH302	SMASA
0977	Jake	Trice	1982	Laverda	Jota Bol d'Or	M/C Solo	TGC410	GVVCVC
0978	David	Biven	1935	Austin	10	Tourer - Sports	SZT777	A7CSA
0979	Scott	Carbone	1938	Dodge	Fargo FG33	Truck - Tray Top	SLO038	CRCASA
0980	Christopher	Kinney	1963	Dodge	Phoenix	Sedan	CC143X	RMCSA
0981	Garry	Small	1974	Holden	LH Torana	Sedan	SLJ772	HTCSA
0982	Ken	Parry	1965	Ford	XP Falcon	Coupe	6227H7	WestDHVC
0983	Berry	Treffers	1971	MG	B	Roadster	SCJ857	MGCCSA
0984	Brody	Baker	1965	Chrysler	New Yorker	Coupe	CC965Z	SMASA
0985	Greg	Morphett	1937	Austin	7	Tourer	RTE606	A7CSA
0986	David	Chadbourne	1983	Nissan	EXA	Coupe	EXA000	
0987	Sarah	Jeanes	1968	Morris	Mini-Matic	Sedan	RCY027	MCSA
0988	Anthony (Tony)	Byard	1990	Mercedes Benz	300CE-24	Coupe	XD131F	GVVCVC
0989	Joe	Trimboli	1960	Morris	Minor	Sedan	MORRY1	MMCCSA
0990	David	Searles	1935	Austin	10	Sedan	UJY222	A7CSA
0991	Trevor	Seebom	1935	Morris	8/48 Series 1	Tourer - Sports	OUR840	MCSA
0992	Sas	Scown	1960	Morris	Minor 1000	Sedan	S631AHF	MCSA
0993	Michael	Green	1965	Triumph	Herald	Convertible	SED52W	
0994	Stevens	John	1949	Austin	A40 Devon	Sedan	VUR517	A7CSA
0995	Nigel	Galliver	1985	Jaguar	XJ6 Series III	Sedan	S626CSO	JDCSA
0996	Guy	Parkinson	1983	Toyota	Hilux	Pickup	UMD784	
0997	Lee	Nicolle	1971	Ford	Galaxie	Sedan	RXC494	SCC

ENTRANT LIST

AWARD ENTRANTS



Concours d'Elegance



Preservation



Electric Conversion

Entry	First Name	Last Name	Year	Make	Model	Body Style	Registration	Club
0998	Brenton	Woodley	1965	Holden	HD	Sedan	SLN502	FX-HZHCC
0999	Colin	Jay	1974	Suzuki	RV125	M/C Solo	S28BRE	PAVRC
1000	Gavin & Jeannie	Franklin	1972	MG	B	Roadster - Sports	S121BY	MGCCSA
1001	Cavallaro	Giovanni	1962	Chrysler	Valiant S Series	Sedan	RAD320	CMCC
1002	Andrew	French	1965	Ford	Mustang	Fastback	SLVR65	BDEHCC
1003	Brian	Jayasingha	1970	Ford	Capri GT	Coupe	01853H	MRDMC
1004	Gilbert	Wood	1954	MG	TF	Tourer	RCD602	MGCCSA
1005	Allister	Green	1971	MG	B	Roadster	SMG071	
1006	David	Laubsch	1913	Renault	CB	Tourer	S619BPI	VetCCSA
1007	Pete	Howard	1931	Chevrolet	National	Tourer	VTE148	VVCAASA
1008	Craig	Nixon	1966	Prince	A200GT	Sedan	RVA951	PSGTR
1009	Hannu	Aho	1954	Austin	A30	Sedan	MABEL1	NDCC
1010	Rob	Thiry	1977	Holden	Torana LX	Sedan	SXD015	SCC
1011	Joel	Tozer	1954	Ford	Prefect	Sedan	SVP100	F8-10SVC
1012	Stuart	Zanotti	1969	Holden	Monaro	Coupe	RPP292	MCCSA
1013	Cameron	Nykiel	1969	Morris	Mini K1100	Sedan	MK1969	
1014	Roger	Pfeiffer	1956	Holden	FJ	Sedan	XD292C	48-FJHCSA
1015	Peter	Whelan	1931	Packard	840	Roadster	31840	MTFCA
1016	Graham	Carson	1963	Holden	EH Special	Sedan	63EH	FX-HZHCC
1017	Ian	Farrar	1935	Buick	Series 40	Sedan	S699CKY	SCC
1018	Jenny	Sandland	1929	Chevrolet	Tourer	Coupe	UJA635	55,56,57SA
1019	Graham	Carson	1969	Morris	Cooper S	Sedan	69MK2	FX-HZHCC
1020	Andrew	Scarman	1971	Holden	Torana	Sedan	RLR148	
1021	Brian	Mensforth	1974	Volkswagen	Beetle	Saloon	SAA318	VECSA
1022	Alan	Scroop	1973	Chevrolet	Corvette	Coupe	73VETT	CPA
1023	Brian & Anne	Ford	1958	Wolseley	1500	Sedan	WSL267	MRSA
1024	Amy	Wells	1977	Leyland	Mini Clubman S	Clubman	SCV511	MiniCSA
1025	Graeme	Toddie	1977	Holden	Monaro GTS	Sedan	MNR077	MCVIC
1026	Paul	Sallis	1969	MG	B	Convertible	RYM926	JDCSA
1027	Paul	Sallis	1969	Aston Martin	DBS	Coupe	S277AHS	AMOC
1028	Bob	Allan	1959	BMW	R26	M/C Solo	S09BTA	BVCMCC
1029	Olivia	Lagos	1973	BMW	2002	Cabriolet	VUG615	BMWDCSA
1030	David	Hedger	1972	Datsun	240Z	Coupe	RED240	WACC
1031	Greg	Van Heteren	1966	Ford	Mustang	Coupe	SGT866	CNC
1032	Richard	Russ	1948	Morgan	4/4	Convertible	RNK220	
1033	Spiro	Efstathiadis	1966	Chevrolet	Corvette	Convertible	VETT66	
1034	Jason	Brooks	1924	Fiat	501	Saloon	RPX549	VSCCSA
1035	Nigel	Eate	1966	Ford	Mustang	Convertible	ITSA66	JCCC
1036	Laurie	Pengelly	1943	Willys	Jeep	Convertible	XHX171	AMHCC
1037	Leigh	Whitten	1985	Holden	VK Commodore	Sedan	1745H3	BDEHCC
1038	Adam	Stone	1976	Mercedes Benz	350SLC	Coupe	UMJ410	SMASA
1039	Trevor	Jones	1952	Matchless	G80S	M/C Solo	S40AEO	COMCC
1040	Michael	Nicholson	1925	Chevrolet	Superior K	Tourer - Convertible	SK1925	
1041	Grant	Robinson	1941	GMC	CCKW 353 6x6	Truck - Light	GMC141	MVPSSA
1042	Matthew	Pritchard	1968	Volkswagen	Baja	Coupe	BB636F	SEAC
1043	John	Roberts	1967	Humber	Snipe	Sedan	RGJ592	HCCSA
1044	Garry	Ludwig	1933	Continental	Beacon	Sedan	CB1933	
1045	Garry	Ludwig	1933	Continental	Beacon	Coupe	LUDWIG1	
1046	Rex	Wilson	1925	Amilcar	C4	Roadster - Sports	XX359L	SCC
1047	Allan	Martin	1954	Bentley	R Type	Saloon	RTI954	CRCASA
1048	Rebecca	Martin	1929	DeSoto	Roadster	Roadster	DESOTO	CRCASA
1049	Merv	Robinson	1936	Auburn	852	Cabriolet	935851	NARC
1050	Alan	Milligan	1988	Volvo	740	Saloon	OYJ20	VCCSA
1051	Matthew	White	1939	Packard	1708	Limousine	39	PACA
1052	Carrie	White	1937	Lincoln	Zephyr	Coupe	22Y23	
1053	Karen	Steicke	1930	BSA	Sloper	M/C Solo	S62AEC	BVCMCC
1054	Philip	Richter	1930	BSA	Sloper	M/C Solo	S63AEC	BVCMCC
1055	Chris	Knight	1992	BMW	K100RS	M/C Solo	S96ATW	COMCC
1056	Trent	Cilento	1985	Toyota	Corona	Sedan	UUH149	
1057	The Vintage Sports Car Club of SA INC		1924	Rugby	M	Tourer	VGA431	VSCCSA
1058	Peter	Ninnis	1965	Ford	XP Falcon Squire	Station Wagon	0465H1	SHVCVC
1059	Nathan	Hammond	1968	Morris	Mini	Sedan	CC764X	MiniCSA

ENTRANT LIST

AWARD ENTRANTS

C Concours d'Elegance

P Preservation

E Electric Conversion

Entry	First Name	Last Name	Year	Make	Model	Body Style	Registration	Club
1060	Bob	Beard	1980	Holden	Commodore	Sedan	SDX683	
1061	Cesare	Silverii	1968	Holden	HK Monaro	Coupe	02237H	SHVCVC
1062	Scott	Wood	1968	BMW	2002	Sedan	SCW068	BMWDCSA
1063	Greg	Dellow	1966	Ford	Galaxie	Sedan	BLUE66	
1064	Peter	McDonnell	1971	Ford	Falcon	Sedan	RHO393	VVMCCSA
1065	Richard	Rench	1954	MG	TF	Convertible	XLJ728	SCC
1066	Shane	Conry	1968	Rolls Royce	Silver Shadow	Sedan	URS888	RROCA
1067	Steve	Pike	1975	Honda	CB200	M/C Solo	S97ALF	CMCC
1068	Simon	Forrest	1969	Ford	Mustang	Coupe	S597AFJ	SMASA
1069	Lionel	Skinner	1956	Chevrolet	Bel Air	Convertible	WILD56	
1070	Mark	Lockwood	1972	Triumph	Mk II 2.5 PI	Sedan	RTN850	StagOCSA
1071	Steven	Saccoccio	1964	Bedford	J2	Truck - Tray Top	RAK084	HCVCA
1072	ALAN	Whyte	1969	Holden	HT Premier	Sedan	69240H	
1073	Peter	Jelfs	1991	Holden	VN	Sedan	VGG192	ACC
1074	Brian	Triplow	1938	Morris	8/40	Tourer - Convertible	VWM595	MRSA
1075	Nigel	Steele Scott	1950	MG	TD	Roadster	SCO050	SCC
1076	Nigel	Steele Scott	1948	Austin	8 HP	Tourer	SCO048	SCC
1077	LANCE	Mckay	1990	Ford	Capri	Convertible	CAPRI7	RSOCSA
1078	Mark	Kaehne	1970	Morris	Cooper S	Sedan	VAR044	MRSA
1079	Kerry	Kaehne	1938	Morris	8/40	Roadster	161347	MRSA
1080	Steven	Wise	1969	Alfa Romeo	1750	Convertible	SPR139	
1081	Trevor	Shepherd	1947	Dodge	Custom - Fluid Drive	Sedan	629S	SCC
1082	Mark	Browning	1976	Holden	TX Gemini	Coupe	SYS398	SMASA
1083	James	Tol	1964	Ford	Falcon	Panel Van	XM1164	FCCSA
1084	Vincent	Rovere	1981	Delorean	DMC12	Coupe	931AI3	
1085	David	Jarrett	1956	Ford	Thunderbird	Coupe	TBD000	SCC
1086	Albert	Jones	1925	Ford	Model T	Tourer	60499	MTFCA
1087	Emmanuel	Coomblas	1916	Studebaker	4-40	Tourer	VGT201	SCC
1088	Phillip	Hunter	1946	BSA	M21	M/C Outfit	TIC613	
1089	John	Yates	1948	Bristol	400	Coupe - Fixed Head	11142	BOCA
1090	Marie	Sharp	1961	Alfa Romeo	Giulietta Ti	Sedan - Touring	2096H9	AROCAVIC
1091	John	Kelly	1966	MG	B	Roadster	RXF451	MGCCSA
1092	Chris	Greening	1971	BMW	3.0 CS	Coupe	RDN660	
1093	Peter	Best	1941	Ford	Coupe Ute	Utility	FORD41	SCC
1094	Daryl	Deuter	1957	Dodge	Custom Royal	Sedan	WLX019	CCCSA
1095	Cathy	Groot	1974	Chrysler	VJ Charger	Coupe	MOPARR	CCCSA
1096	David	Bicknell	1967	Jaguar	420	Saloon	RAZ161	JDCSA
1097	Jeffrey	Wakefield	1940	Ford	V8 Deluxe	Sedan	RRH226	
1098	Sam	Walker	1965	Chevrolet	Impala	Sedan	S514CNF	SMASA
1099	Kim	Watkins	1973	Ford	Falcon XA	Sedan	RKW173	SMASA
1100	Bradleigh	Watkins	1987	Ford	XF S Pack	Sedan	UEO207	GVVCVC
1101	Andrew	Mckenzie	1953	Land Rover	Series 1 80"	Utility	HUE053	
1102	Peter	Williams	1989	Volvo	244	Wagon	UPY089	VCCSA
1103	Byron	Barnes-Williams	1984	Nissan	300ZX	Targa Top	SZX084	VCCSA
1104	Paul	Irvin	1964	Holden	EH	Sedan	02677H	BDEHCC
1105	Susan	Brunner	1967	Volkswagen	1300 Beetle Deluxe	Saloon	RRT902	COMCC
1106	Maria	Korps	1978	Volvo	245L	Panel Van	SJA428	VCCSA
1107	Terry	Fraser	1973	Honda	CB350	M/C Solo	708GH	UC
1108	Stephen	Edwards	1978	Chrysler	Sigma	Sedan	SXY300	CCCSA
1109	Michael	Girdler	1976	Datsun	260Z 2+2	Fastback	DD126K	NDCC
1110	Paul	Mills	1973	Honda	CB750	M/C Solo	S64BTT	COMCC
1111	Frank	Reed	1925	Rugby	F	Tourer	RUGBY25	VSCCSA
1112	Patrick	Collis	1964	Jaguar	Mk II	Saloon	S112ANM	A7CSA
1113	Cliff	Alvey	1993	Ford	Capri	Convertible	XX475R	A7CSA
1114	Philip	Prior	1969	Holden	HT	Coupe	AHT350	
1115	Jarrod	Roocke	1973	Land Rover	Series 3	Wagon	SYB962	
1116	Jim	Bowering	1955	MG	TF 1500	Tourer - Sports	RDP550	MGCCSA
1117	Jodie	Hogben	1974	Ford	Gran Torino	Sedan	S523CSY	SMASA
1118	Peter	Roper	1991	Toyota	Corolla AE95	Station Wagon	DADA00	MidMCC
1119	Dave	Darwin	1974	Volvo	164	Saloon	SAR164	HCCSA
1120	Andrew	Schwarz	1976	Leyland	Mini	Clubman	SCK873	
1121	Bob	Meyers	1982	Mercedes Benz	SL	Coupe - Sports	MY1982	SCC
1122	Andrew	Grace	1967	Holden	HR	Sedan	RCT504	A7CSA

ENTRANT LIST

AWARD ENTRANTS

C Concours d'Elegance

P Preservation

E Electric Conversion

Entry	First Name	Last Name	Year	Make	Model	Body Style	Registration	Club
1123	Brian	Toogood	1969	MG	B Mark II	Convertible	S925CVA	
1124	Ross	Rasmus	1950	Jaguar	Mk V	Coupe - Drophead	JAGUR5	JCCC
1125	Ethan	Kasearu	1983	Volvo	240 GL	Sedan	390S	VCCSA
1126	Ian	Maxwell	1975	Honda	GL1000	M/C Solo	192RH	
1127	Douglas	Maclean	1950	Jaguar	Mk V	Saloon	RHF928	JDCSA
1128	Darren	Patrick	1969	Ford	Cortina Mk II GT	Sedan	RTF328	FOCCSA
1129	Adam	Savis	1991	Alfa Romeo	33	Sedan	CC691X	AROCA
1130	Chris	Fraser	1976	Holden	HJ	Station Wagon	DD16XO	DRRCC
1131	Wayne	Pearson	1965	Ford	Falcon XP	Sedan	569493	FCCSA
1132	Neil	Thelning	1960	Morris	Minor	Van	UTG 911	MMCCSA
1133	Keith	Williamson	1974	Triumph	Stag	Tourer - Convertible	STAG00	SCC
1134	Keith	Williamson	1968	Jaguar	420	Saloon	JAG420	SCC
1135	Keith	Williamson	1970	Triumph	TR6	Tourer - Convertible	TROO06	SCC
1136	Bruno	Turrini	1966	Isuzu	Bellett GT 1600	Coupe	RLJ387	
1137	Michael	Sawyer	1937	Vauxhall	GY	Sedan	VX1937	VOCASA
1138	Michael	Sawyer	1927	Vauxhall	14/40 LM	Tourer	VX1927	VOCASA
1139	Sharon	Watkins	1948	Morris	Z	Utility	ROG952	MCSA
1140	Kym	Booth	1968	Ford	Mustang	Coupe	SXTEE8	BVFC
1141	Jamie	Crowe	1988	Holden	VL SS Group A Commodore	Sedan	AA365B	SMASA
1143	Robert	Stapley	1959	Simca	Aronde	Sedan	S554BRW	
1144	Colin	Wegener	1962	Holden	EK	Sedan	VJM938	ACCMB
1145	Detlev	Vogt	1975	BMW	R90S	M/C Solo	TIE943	
1146	Allan	Forster	1971	Datsun	1600	Sedan	ROT100	
1147	Wallace	Stewart	1958	Morris	Minor	Utility	RWS200	MMCCSA
1148	Kevin	Weeks	1955	Mercedes Benz	W196	Racer	WEEKS1	MGCCSA
1149	Raymond	Heilman	1986	Mitsubishi	TM Magna Elite	Sedan	58198H	CAVC
1150	Richard	Venning	1935	Packard	12th Series Senior	Tourer	WRV004	RMCSA
1151	Brian	Collins	1924	Oakland	6-54	Tourer - Convertible	RLT333	AAAC
1152	Peter	Rotman	1975	Toyota	Celica	Coupe	ST1975	CNC
1153	Ben	Seidel	1992	Mazda	Cosmo	Coupe	SEIDEL1	
1154	Bryan	Gregson	1973	Jensen	Interceptor Mk III	Sedan	SSS440	JenCCA
1155	Allen	Tolfts	1946	Hudson	Commodore	Coupe - Club	CH1946	
1156	Peter	Lawson	1934	Chevrolet	Master	Roadster	CHV034	MCCSA
1157	Steve	Berno	1974	Mercedes Benz	240D	Sedan	S866CFX	
1158	Garry	Hibble	1966	Morris	Mini	Sedan	RUO643	RCC
1159	Matt	Smaling	1973	Ford	Falcon	Sedan	XGN150	MtGVVCC
1160	Chris	Page	1981	Mitsubishi	Colt	Hatchback	COLT81	
1161	Geoff	Moody	1973	Holden	HQ Monaro LS	Coupe	RYY-521	SMASA
1162	Carlo	Didiano	1953	Morris	Oxford	Sedan	SRB053	AHMRC
1163	Robert	Davenport	1964	Jaguar	S Type	Saloon	XIC064	AROCA
1164	Geoffrey 'Elvis'	Asher	1949	Cadillac	Series 62	Coupe	CADDY49	NCCA
1165	Geoffrey 'Elvis'	Asher	1976	Cadillac	Eldorado	Convertible	27946	NCCA
1166	Glen	Woodforde	1954	MG	TF	Tourer - Convertible	TF1250	SCC
1167	Colin	Hall	1992	Ford	NC Fairlane	Sedan	SNC192	GVVCVC
1168	Patrick	Gill	1991	Suzuki	GSXR	M/C Solo	TIR761	CMCC
1169	Dianne	Dolman	1983	Ford	XE Fairmont Ghia	Sedan	PURR14	ACC
1170	Chris	Duncan	1932	Chevrolet	Confederate	Tourer - Convertible	SRX032	VVCAASA
1171	Roger	O'Loughlin	1953	Horex	Regina 350CC	M/C Solo	TL444	COMCC
1172	Sara	Hall	1954	Morris	Minor	Panel Van	RJB859	SMASA
1173	Daniel	Pearce	1972	Ford	Capri	Coupe	RXL076	SMASA
1174	Rick	Grainger	1978	Ford	XC Cobra	Coupe	SZC151	RCC
1175	Julian	Mcneil	1914	Sunbeam	12-16	Tonneau	SA8275	VetCCSA
1176	Daniel	Parisi	1966	Ford	Mustang	Coupe	XFP302	SMASA
1177	Philip	Carr	1970	Volvo	1800E	Coupe	RUV888	VCCSA
1178	Joanne	Landrigan	1970	Ford	Mustang	Coupe	S467CMT	MOC
1179	Jay	Argy	1958	Volkswagen	Beetle	Sedan	VW1958	
1180	Simon	Kollosche	1979	Chevrolet	Camaro	Coupe	Z28302	SMASA
1181	Greg	Stanley	1971	Holden	Torana	Coupe	1ALJ	
1182	Brian	Rasmus	1967	Chevrolet	Camaro	Convertible	S856CUP	CPA
1183	Robert	Buckley	1974	Leyland	Mini Clubman S	Sedan	SAA581	MiniCSA
1184	Damien	Etscheid	1968	Morris	Mini Deluxe	Sedan	RSH058	MiniCSA
1185	Geraldine	Dohnt	1970	Mazda	Capella	Sedan	VMT875	TBAC

ENTRANT LIST

AWARD ENTRANTS

C Concours d'Elegance

P Preservation

E Electric Conversion

Entry	First Name	Last Name	Year	Make	Model	Body Style	Registration	Club
1186	Vincenzo	Carrocci	1974	Datsun	260C	Sedan	SNG642	FX-HZHCC
1187	Dion	Di Vittorio	1974	BMW	2002 Tii	Coupe	RBO274	BMWDCSA
1188	Colin	Behn	1920	Harley Davidson	W	M/C Solo	YYA389	VVMCCSA
1189	Brett	Pawelski	1970	Chrysler	Valiant	Hardtop	SMS360	CCCSA
1190	Stephen	Cramp	1978	Honda	CB750 Police Edition	M/C Solo	S17BVJ	VVMCCSA
1191	Gavin	Bussenschutt	1984	Mitsubishi	Scorpion	Coupe	S430VPN	AMHCC
1192	Joe	Sommariva	1958	Chevrolet	Corvette	Convertible	S375CSZ	FCSA
1193	John	Hancock	1909	Gregoire	70/4	Runabout	GR1909	VetCCSA
1194	Mike	Barber	1968	Holden	HK Monaro	Coupe	RHK401	SMASA
1195	David	Bernard	1964	Rover	P5	Coupe	S352AYH	RCCSA
1196	Anthony	Kruimel	1967	MG	B	Tourer - Convertible	RAE356	
1197	Marc	Kress	1963	Holden	EJ	Station Sedan	EEJ138	SMASA
1198	Dale	Goldsmith	1979	Chevrolet	Corvette	Coupe	S544AGX	CCSA
1199	Rowan	Eggers	1991	Holden	Caprice	Sedan	SVQ918	MCCC
1200	Brenton	Gallasch	1976	Holden	Torana	Coupe	SLL741	HTCSA
1201	Ray	Thalbourne	1969	Chrysler	Valiant Regal 770	Sedan	RVF318	SMASA
1202	Scott	Prior	1929	REO	Flying Cloud	Sedan	171977	SMASA
1203	Craig	Hayter	1976	Holden	HX Limited Edition	Coupe	SLE976	
1204	Kahiwa	Sebire	1985	Yamaha	RZ250	M/C Solo	INHAL3	
1205	Jon	Chittleborough	1950	Riley	RMC	Roadster - Sports	UYR222	RMCSA
1206	Antonio	Silvestri	1970	Plymouth	Cuda	Coupe	340CUDA	CMCC
1207	Grant	Brindal	1982	Porsche	911 SC	Targa Top	SC1982	PCCSA
1208	Stephen	Eshman	1980	Leyland	Moke	Tourer	MNIMOKE	SAMC
1209	Martin	Jackson	1993	Holden	VR Commodore SS	Sedan	BB605Z	SMASA
1210	Peter	Brennand-Green	1988	Rover	Mini Mayfair	Sedan	XMO274	MiniCSA
1211	John	Razzano	1962	Mercedes Benz	220	Cabriolet	33111	MBCSA
1212	Jaime	Ryals	1969	MG	B GT	Coupe	SXN063	
1213	Joanne	Cave	1969	Lotus	Elan +2	Sedan	RDS820	A7CSA
1214	Andrew	Routley	1966	Morris	1100	Sedan	S721AMD	MCSA
1215	David	Rocklyn	1971	Ford	Fairmont	Sedan	SXY250	NMCC
1216	Graham	Nuske	1961	Volkswagen	Kombi	Pickup	S295CBX	SAMC
1217	Peter	Clemente	1955	Buick	Super	Sedan	BRONX	IMCC
1218	Ronald	Millard	1964	Vauxhall	Victor	Sedan	VFB064	HMVCSA
1219	Bruno	Carrocci	1955	Holden	FJ	Sedan	468046	48-FJHCSA
1220	Paul	Weir	1991	Holden	Calais	Sedan	VFK446	SMASA
1221	Callum	Thomson	1976	Toyota	Corona Mk II	Hardtop	RMX023	SMASA
1222	Matthew	Croall	1985	Volvo	240	Sedan	UTH483	WVCCC
1223	William	Altmann	1958	Holden	FC	Sedan	FC0058	SMASA
1224	Adam	Hatty	1976	Datsun	260Z	Coupe	RGM304	SCDSA
1225	Graeme	Ward	1977	Holden	Torana	Sedan	SXH087	
1226	Kevin	Szekely	1968	Mercedes Benz	280SL	Convertible	DADS68	MBCSA
1227	David	Dunning	1927	Chevrolet	Capitol	Tourer	POPS01	
1228	Peter	Koch	1960	Chrysler	New Yorker	Coupe	NEWYKR	CLCA
1229	Derek	Godfrey	1951	Morris	Oxford MO	Saloon	XMH993	MRSA
1230	Daniel	Leopardi	1970	Fiat	500	Coupe	RED652	
1231	James	Mcindoe	1936	Morris	12/4 Series 2	Tourer	04530H	MRVIC
1232	Bill	Stock	1944	Ford	GPW	Utility	JEEP1944	SPV&MRC
1233	Darren	Saler	1970	Ford	Falcon	Sedan	SAL070	SMASA
1234	Peter	Dettloff	1972	Holden	Torana	Sedan	UOH283	
1235	Ivano	Girardo	1971	Ford	XY Falcon	Sedan	GTHO33	FCCSA
1236	Darryl	Grey	1948	Jaguar	Mk IV	Sedan	4824	SCC
1237	Chris	Jobson	1968	Daimler	250	Saloon	DAIM69	JCCC
1238	Rob	Anns	1978	Datsun	1200	Utility	DD003M	
1239	Richard	Brundell	1948	Indian	Chief	M/C Solo	S46ABK	VVMCCSA
1240	Stephen	Kilpin	1966	Holden	HR	Sedan	RAJ433	ACC
1241	David	Garnett	1935	Austin	Ruby	Roadster	VXV986	A7CSA
1242	Mike	Osborne	1951	Alvis	TA21	Coupe - Convertible	ALVIS1	MAPS
1243	Kevin	Mitchell	1985	Alfa Romeo	Guilietta	Sedan	UTF456	AROCA
1244	Graeme	Mclennan	1925	Oakland	6-54	Roadster	16567H	BHMCC
1245	Daniel	Murray	1968	Ford	Mustang	Coupe	S492AMS	SMASA
1246	Mark	Bartold	1988	Jaguar	XJ-S	Convertible	SED73E	JDCSA
1247	Robert	Noordhoek	1991	Holden	VP Commodore	Sedan	VJJ305	SMASA

ENTRANT LIST

AWARD ENTRANTS



Concours d'Elegance



Preservation



Electric Conversion

Entry	First Name	Last Name	Year	Make	Model	Body Style	Registration	Club
1248	Drew	Fenton	1960	Mercedes Benz	190B	Sedan	UVO956	MBCSA
1249	Michael	Read	1928	Willys	Knight 70A Special Six	Tourer	WIKN70	SMASA
1250	Marcus	Warren	1937	Buick	Standard	Sedan	S809CBA	MVMC
1251	Ed	Scanlon	1984	Toyota	Landcruiser LX	Hardtop	UMJ912	SMASA
1252	Michael	Wohltmann	1984	Mercedes Benz	500SEL	Sedan	UHE462	MBMRCSA
1253	Kingsley	Branson	1960	Volkswagen	Beetle	Sedan	XGO646	GVVCVC
1254	John	Delaat	1973	Leyland	Mini Clubman	Sedan	MINI73	MiniCSA
1255	Shane	Liston	1966	Ford	Cortina	Sedan	SLO440	SMASA
1256	John	Robinson	1976	Holden	HX Kingswood	Sedan	SRX194	SMASA
1257	John	Robinson	1929	Marquette	36S	Coupe	RVB598	SMASA
1258	Graeme	Suckling	1965	Datsun	Fairlady Sports	Tourer - Sports	RSP310	NDCC
1259	Stuart	Martin	1974	Jeep	CJ-6	Utility	SRM054	SDCC
1260	Michael	Hill	1978	Holden	HZ Premier	Sedan	HZP308	FX-HZHCC
1261	Amanda	Lacey	1982	Jaguar	Sovereign	Sedan	RXJ006	
1262	Daniel	Parsons	1984	Vauxhall	Cavalier	Estate	UCD853	
1263	Daniel	Parsons	1975	Leyland	Mini	Sedan	S038BYL	
1264	Don	Barratt	1972	Norton	Commando	M/C Solo	TGW642	NDMA
1265	Clayton	Hayball	1977	Jaguar	XJ6	Sedan	SMG627	JCCSA
1266	Steven	Connell	1967	Austin	1800	Sedan	CRAB67	
1267	Lewis	Jackson	1980	Holden	VC Vacationer	Saloon	SKM848	SMASA
1268	Jim & Margaret	Thompson	1923	Bean	Fourteen	Tourer	33860	VSCCSA
1269	David	Retallic	1929	Chevrolet	International	Roadster - Sports	RCP528	SCC
1270	Liz	Milton	1985	Holden	VK	Sedan	MYV8	SMASA
1271	Roger	Boehm	1926	Rugby	R	Sedan	S703BDG	NARC
1272	Dave	Soroka	1972	Chrysler	VH Charger	Coupe	RVH572	CCCSA
1273	Alec	Harris	1977	Mercedes Benz	300D	Sedan	S187BJE	GVVCVC
1274	Jordan	Bates	1936	Austin	7	Tourer	VGL856	A7CSA
1275	Shane	Hill	1972	Holden	HQ	Utility	RLW219	
1276	Scott	Powell	1978	Holden	Kingswood	Station Wagon	SKW487	FX-HZHCC
1277	James	Rodriguez	1993	Nissan	Skyline	Coupe	S770AAV	
1278	Graham	Billett	1958	Rover	105S	Sedan	ROV057	RCCSA
1279	Bill	Rodriguez	1977	MG	B	Roadster - Sports	S957ABH	
1280	Dave	Carey	1964	Isuzu	Wasp	Utility	RKR020	SMASA
1281	Kerry	Langkilde	1969	Ford	Mustang	Coupe	SWEET69	
1282	Scott	Cullen	1989	Volvo	240	Wagon	S100APV	VCCSA
1283	Trent	Batchelor	1969	Ford	Capri	Coupe	S458CPV	BVFC
1284	Leigh	Ragless	1961	International	AA151	Fire Appliance	RFS000	FCCSA
1285	Chris	Miller	1967	Morris	Mini	Sedan	SER000	MiniCSA
1286	Nigel	Steele Scott	1954	Citroën	Light 15	Sedan	SCO054	SCC
1287	Domenico	Calabro	1964	Fiat	2300 Abarth	Coupe	22427	SICC
1288	Donald	Maclean	1959	Austin	Westminster A99	Saloon	S429BIE	A7CSA
1289	Giulia	Carrocci	1955	Volkswagen	Beetle	Coupe	SVW555	48-FJHCSA
1290	Paul	Wilson	1929	Chevrolet	AC International	Sedan	S714BDZ	NARC
1291	David	Crawford	1993	Triumph	Daytona	M/C Solo	THY635	
1292	Shane	Daly	1965	Ford	Falcon	Sedan	SXP221	AMCCSA
1293	Markus	Ecker	1965	Kreidler	Florett TS	M/C Solo	6963H	CRC
1294	Ian	Hodge	1974	Citroën	D Special	Sedan	97099H	ABCCC
1295	Jeff	Pickett	1968	Ford	Galaxie	Sedan	S162BXX	
1296	Graham	Stanton	1974	Holden	HQ	Sedan	GTS4DR	
1297	Bruce	Lawton	1978	Pontiac	Trans AM	Coupe	78TA	SMASA
1298	Neil	Gray	1929	BSA	S29	M/C Solo	OU1528	AtujMCC
1299	Mark	Abbott	1938	MG	TA	Tourer	VWA182	
1300	Dave	Barber	1971	Holden	HQ Monaro	Sedan	RDG350	MCCSA
1301	Tim	Lacey	1968	Toyota	RT40 Corona	Sedan	RNL020	
1302	David	Bray	1977	Holden	Torana	Sedan	LX1977	HTCSA
1303	Rodney	Dunning	1979	Holden	TE Gemini Sedan	Sedan	SZS270	NARC
1304	Rodney	Dunning	1928	Buick	Tourer	Tourer	VLF308	NARC
1305	Natarsha	Cooke	1971	Ford	XY Falcon GS	Sedan	RDS262	BVFC
1306	Jessica	Dunning	1975	Toyota	Celica	Coupe	SFF244	
1307	Norman	Zacher	1928	Dodge	Tourer	Tourer	S000AIZ	PAVRC
1308	Phillip	Hunt	1978	Chrysler	Charger CL 770	Coupe	SHY716	
1309	Steve	Freeman	1954	Hillman	Husky	Station Wagon	ROK673	HillCCSA
1310	Chris	Dillon	1953	Holden	48-215 FX	Sedan	GAC720	MTFCVIC

ENTRANT LIST

AWARD ENTRANTS

C Concours d'Elegance

P Preservation

E Electric Conversion

Entry	First Name	Last Name	Year	Make	Model	Body Style	Registration	Club
1311	Arthur	Mathews	1947	Austin	Sheerline	Saloon	RBE675	GVVCVC
1312	Ross	Pawley	1970	Morris	Mini Cooper S	Sedan	S477CSW	
1313	Matthew	Hart	1969	Ford	Falcon	Coupe	S940CLH	SMASA
1314	Jake	Bonnici	1923	Ford	Model T	Utility	BOOSH1	MTFCA
1315	Martin	Lovell	1938	Vauxhall	H Caleche	Convertible	VAUX38	
1316	George	Gasiorowski	1981	Mazda	RX 7	Coupe	XX122P	SMASA
1317	Paul	Wheeler	1939	Oldsmobile	Series 60	Roadster - Sports	39OLDS	OCA
1318	Lynnear	Fagan	1918	Dodge	Tourer	Tourer	RMP965	VetCCSA
1319	Richard	Hall	1949	Mercedes Benz	170DS	Sedan	VUJ804	
1320	Mark	Anderson	1911	Humber	12-20	Coupe - Doctors	2793	VetCCSA
1321	John	Warner	1928	Oldsmobile	F28	Tourer	OLDS28	OCA
1322	Simon	Wenzel	1976	Leyland	Mini Clubman	Sedan	SXA099	MiniCSA
1323	Steven	Grist	1923	Studebaker	Light 6	Tourer	STUDE6	MGCCSA
1324	David	Carver	1928	Ford	Model A	Tourer	VGA424	MTFCA
1325	Frederick	Caruso	1936	Singer	Super 9	Sedan	VYD275	
1326	Ian	Burnett	1971	Triumph	TR6	Sports	AFX548	SCC
1327	Russell	Vine	1940	Austin	Eight	Sedan	AU1940	NMVM
1328	Dave	Ferris	1927	Chevrolet	Capitol	Buckboard	AA1927	MCCC
1329	Tim	Elsom	1965	Fuji	Rabbit	Scooter	ELSON	LCA
1330	David	Mccarthy	1938	Rolls Royce	25/30	Saloon	RR1938	JCCC
1331	Michael	Poland	1926	Austin	12	Tourer	VOY088	SCC
1332	Jamie	Sandford-Morgan	1948	MG	TC	Tourer	1943	RCCSA
1333	Graham	Ferris	1928	Willys	Whippet	Buckboard	SEJ340	GVVCVC
1334	Bill	Usher	1977	Toyota	Crown	Sedan	SCM565	AAAC
1335	John	Lockwood	1947	MG	TC	Tourer	TC4830	MGCCSA
1336	David	Broadbent	1948	MG	TC	Roadster	RBS842	MGCCSA
1337	Bevan	Clifford	1947	MG	TC	Tourer	MGTC47	RVCCC
1338	Henry	Mcewen	1985	Subaru	Vortex	Coupe	UHT491	AMHCC
1339	Ronald	Ritter	1971	Yamaha	R5 350	M/C Solo	YZY102	COMCC
1340	Richard	Thwaites	1926	Amilcar	CGS 3	Sports	VXX000	BDCSA
1341	Philip	Pattison	1946	Willys	CJ-2A	Utility	S910BBX	AMHCC
1342	Peter	Mullins	1926	Ford	Model T	Depot Hack	VHZ110	
1343	Michael	Russell	1949	Austin	A40	Tourer	WDG125	MCCC
1344	Paul	Field	1970	Jaguar	E Type Series 2 2+2	Coupe	RGJ163	SCC
1345	Stewart	Heard	1926	Chevrolet	Superior K	Buckboard	XFP962	
1346	Brian	Koch	1949	Bedford	KM	Truck - Light	XS32EZ	NARC
1347	Gordon	Williams	1927	Buick	Tourer	Tourer	VWI027	NARC
1348	Gordon	Williams	1939	Buick	Series 40	Sedan	S739CFM	NARC
1349	Ian	Richards	1947	Royal Enfield	RE125 "Flying Flea"	M/C Solo	C64072	SCC
1350	Raymond	Griffin	1937	Pontiac	Silver Streak	Sedan	87270H	CHACA
1351	Patricia	Gray	1930	Ford	Model A	Roadster	5988CRB	FCCSA
1352	Ian	Gear	1952	Sunbeam-Talbot	Mk II	Sedan	RXA803	SCC
1353	Martin	Blanchard	1929	Ford	Model A	Coupe - Sports	S020BAU	MAFCSA
1354	Stephen	Hoffmann	1928	Buick	27-115	Sedan	XGD378	CRCASA
1355	David	Chantrell	1911	Ford	Model T	Tourer	S543ACT	VetCCSA
1356	Colin	Maginnity	1927	Amilcar	C4	Coupe	7063	MHM
1357	Kylie & Jeff	Howard & Beatty	1937	Morris	8/40 Series 2	Roadster	VGM840	MRSA
1358	Chris	Burton	1948	MG	TC	Coupe	TC4193	MGCCSA
1359	David	Garnett	1932	Austin	Chummy	Tourer	WUI436	A7CSA
1360	Robert	Horn	1940	MG	TB	Tourer	SVW656	MGCCSA
1361	Robert	Horn	1948	MG	TC	Tourer	WLF961	MGCCSA
1362	Ken	Durward	1935	Ford	C	Sedan	VHV935	MTFCA
1363	Michael	Hall	1928	Chevrolet	Capitol	Truck - Light	S732BKE	F8-10SVC
1364	Ian	Thornley	1927	Oakland	6-54	Tourer - Convertible	SLS483	NHVC
1365	Robert	Balfour	1931	Ford	Model A Deluxe	Roadster - Sports	MY1931	MTFCA
1366	Janelle	Gaudet	1946	Austin	Wasp	Convertible	RUS787	A7CSA
1367	Robert	Pridham	1932	Chevrolet	BA Confederate	Roadster	131345	VVCAASA
1368	Sarah	Marquis	1937	Oldsmobile	Truck	Truck - Tray Top	BOXER37	
1369	Paul	Senior	1950	Ford	Prefect	Sedan	S222ANH	VSCCSA
1370	Paul	Senior	1956	BSA	Bantam	M/C Solo	S93AUF	VSCCSA
1371	Greg	Driver	1927	Chevrolet	Capitol	Tourer	RYX000	VVCAA
1372	Alec	Mathieson	1951	International	AL110	Station Wagon	RDL937	

ENTRANT LIST

AWARD ENTRANTS



Concours d'Elegance



Preservation



Electric Conversion

Entry	First Name	Last Name	Year	Make	Model	Body Style	Registration	Club
1373	Robert	Horn	1952	MG	TD	Tourer	UYJ996	MGCCSA
1374	Robert	Horn	1954	MG	TF	Tourer	S768CTC	MGCCSA
1375	Robert	Lynch	1954	Austin	A30	Sedan	WTL186	A7CSA
1376	John	Hams	1955	Holden	FJ	Sedan	448534	
1377	Ben	Walsh	1957	Chevrolet	Bel Air	Two door	CLARE57	
1378	Natasha	Brooks	1958	Sunbeam	Rapier	Sedan	S892CRL	SunCC
1379	Raymond	Burgess	1961	Studebaker	Lark	Sedan	S220AZY	StuCCSA
1380	Dean	Lavers	1961	Volkswagen	Microbus 23-Window	Van	58212H	CWCC
					Samba			
1381	Scott	Rayner	1962	Valiant	S Series	Sedan	SAR225	
1382	John	Hunter	1962	Chrysler	Valiant R Series	Sedan	RVI062	R&SSVCC
1383	Chris	Henschke	1962	Chrysler	Valiant S Series	Sedan	440556	R&SSVCC
1384	Kevin	Ratsch	1964	Holden	EH	Utility	RRZ555	48-FJHCSA
1385	Greg	Green	1966	Toyota	Corona	Sedan	CHARL1	AdelCC
1386	Rodney	Clee	1967	Holden	HR Special	Sedan	ROD726	FX-HZHCSA
1387	Stephen	Turner	1967	Morris	Mini	Sedan	RAC144	MiniCSA
1388	Ronald	Thompson	1967	Chevrolet	Impala	Sedan	61089H	MMCC
1389	Michael	Nielsen	1968	Morris	Mini Minor	sedan	S074BTK	ModMCCSA
1390	Garry	Pattingale	1969	Holden	HK Premier	Sedan	WPF325	WVCC
1391	Andrew	Fox	1970	Holden	HG	Sedan	RSP502	
1392	Leon	Mead	1970	Holden	LC GTR	Coupe	FLO079	HTCSA
1393	Adam	Pickering	1971	Datsun	1200	Sedan	SIR012	A7CSA
1394	Peter	Gorton	1972	Volkswagen	Superbug	Sedan	78139H	GRM
1395	John	Hoskins	1972	Ford	Falcon GT	Coupe	00867H	FCCA
1396	Paul	Tierney	1973	MG	B	Roadster	REG171	MGCCSA
1397	Greg	Payne	1974	Holden	HJ Kingswood	Wagon	SURF74	
1398	Raymond	Burgess	1976	Chrysler	VK Charger	Coupe	S363BAS	CCCSA
1399	Vincenzo	Carrocci	1977	Holden	SL/R Torana	Sedan	SHX030	FX-HZHCC
1400	Rodney	Hill	1978	Holden	Premier	Sedan	SHU062	MCCSA
1401	Lachlan	Crowe	1979	Mercedes-Benz	450SLC	Coupe	S030CRD	MBCSA
1402	Grant	Wyett	1980	Chrysler	CM Regal	Sedan	UBL851	CCCSA
1403	Jessica	Paige	1980	Holden	Kingswood	Sedan	SEB472	CCHE
1404	Christopher	Woolley	1985	Holden	VK Brock Group A	Sedan	VKHDT	SCC
1405	Phil	Johnson	1986	Citroën	2CV6	Sedan	TWOCAN	CitCSA
1406	Ren	Gower	1990	Toyota	Celica	Liftback	RED184	
1407	Garry	Wellington	1990	Ford	Capri	Tourer	XC009Y	BVHVC
1408	Janine	Samarinoff	1990	Mazda	MX5	Roadster - Sports	CHUNKYY	
1409	David	Munday	1993	Range Rover	Vogue	SUV	S689CRY	RR&DCSA
1410	Cheryl	Hage	1948	Oldsmobile	Ace 66	Sedan	247412	OCA
1411	Brodie	Bishop	1923	Fiat	501C	Tourer	SCH501	FLCCSA
1412	Derek	Hutchins	1960	Pontiac	Laurentian	Sedan	UCW198	
1413	Garry	Buckton	1974	Triumph	Stag	Convertible	SAX484	TSOASA
1414	Christopher	Strange	1968	MG	B GT	Coupe - Sports	UEC875	SCC
1415	Peter	Bowen	1957	Ford	Thunderbird	Convertible	TBIRD1	SMASA
1416	Dave	Pinson	1972	Ford	Mustang	Coupe	S328btm	BVFC
1417	Aidan	Scott	1972	Toyota	Crown	Sedan	RAD972	
1418	Daniel	Murray	1965	Ford	Mustang	Sedan	REDGT8	SMASA
1419	George	Kassos	1973	Ford	Gran Torino Sport	Fastback	SGK351	
1420	Geoff	Bartlett	1950	Morris	Minor	Tourer	1537H3	SPC&HCC
1421	Barry	O'Shea	1973	Chrysler	Charger	Coupe	RLF795	CCCSA
1422	Sozo	Nikias	1949	Rover	P3 75	Saloon	S965BPD	SCC
1423	Keith	Bartley	1917	Dodge	4	Tourer	VET196	VetCCQLD
1424	Wayne	Hofmeyer	1983	Kawasaki	GPZ 750 Turbo	M/C Solo	S30BRI	A7CSA
1425	Bruce	Rundell	1948	Ford	Anglia	Sedan	SFK897	PCCSA
1426	Martyn	Carter	1924	Dodge	Tourer	Tourer	S803auc	VetCCSA
1427	Martyn	Carter	1928	Ford	A	Utility	XUC608	VetCCSA
1428	Martyn	Carter	1984	Ford	KB Laser	Sedan	BYO664	VetCCSA
1429	Jamie	Bolton	1964	Triumph	TR4	Roadster	13903J	SCC
1430	CMV Group		1963	Toyota	Landcruiser FJ45	Four Wheel Drive	VNL703	HCVCA
1431	CMV Group		1963	Toyota	Landcruiser FJ45	Utility	WHT280	HCVCA
1432	CMV Group		1974	Toyota	Landcruiser FJ45	Four Wheel Drive	SFJ074	HCVCA
1433	CMV Group		1977	Toyota	Landcruiser FJ55	Four Wheel Drive	sst378	HCVCA
1434	CMV Group		1978	Toyota	Landcruiser HJ45	Four Wheel Drive	SSX124	HCVCA

ENTRANT LIST

AWARD ENTRANTS

C Concours d'Elegance

P Preservation

E Electric Conversion

Entry	First Name	Last Name	Year	Make	Model	Body Style	Registration	Club
1435	CMV Group		1979	Toyota	Landcruiser HJ45	Four Wheel Drive	SOV008	HCVCA
1436	CMV Group		1982	Toyota	Landcruiser FJ45	Utility	UAF025	HCVCA
1437	CMV Group		1982	Toyota	Landcruiser	Troop	UPK331	HCVCA
1438	CMV Group		1982	Toyota	Landcruiser BJ45 Short Wheel Base	Four Wheel Drive	VUL393	HCVCA
1439	CMV Group		1983	Toyota	Landcruiser FJ60	Four Wheel Drive	ULT959	HCVCA
1440	CMV Group		1985	Toyota	Landcruiser BJ75 Mid Wheel Base	Four Wheel Drive	WZN937	HCVCA
1441	CMV Group		1986	Toyota	Landcruiser HJ75	Troop	UJD452	HCVCA
1442	CMV Group		1988	Toyota	Landcruiser FJ60	Four Wheel Drive	UKX568	HCVCA
1443	CMV Group		1988	Toyota	Landcruiser HJ60	Four Wheel Drive	UKA557	HCVCA
1444	CMV Group		1988	Toyota	Landcruiser HJ60 Sahara	Four Wheel Drive	UBJ025	HCVCA
1445	CMV Group		1989	Toyota	DA155	Truck	SB08JB	HCVCA
1446	Paul	Taylor	1947	Bentley	Mk VI Special	Tourer - Drophead	1616	BDCSA
1447	Stephen	Tully	1965	Ford	Mustang	Sedan	RST065	MOC
1448	Frank	Sapio	1927	Chevrolet	Tourer	Sedan	WEM227	MVA
1449	Anthony	Raschella	1934	Plymouth	PF	Sedan	RNT173	
1450	Jereo	Barnes	1928	Willys	Knight	Tourer	WK1928	SCC
1451	David	Beaumont	1927	Bugatti	Type 40	Tourer	T40	BDCSA
1452	John	Mcdonald	1932	Rolls Royce	20/25	Sedan	S792BKX	VSCCSA
1453	Jim	Pearce	1926	Morris	Cowley	Tourer	MC1926	MCSA
1454	David	Keats	1975	Chrysler	GC Galant	Wagon	S463CRZ	CCCSA
1455	Brian	Barwick	1929	Graham Paige	612	Sedan	GP1929	HCMVC
1456	Darren	Booth	1973	Ford	XA GT Falcon	Coupe	S210BOC	FGTCSA
1457	Rob	Davenport	1992	Honda	Beat	Roadster	BEAT01	HonCC
1458	Trevor	Heading	1963	Ford	XL Futura	Sedan	RRS935	LMVEMC
1459	Matthew	Schoepf	1968	Austin	2-45 FG	Bus	RNM710	BPASA
1460	Michael	Smith	1962	Volvo	PV 544 Sport	Coupe	S540BSP	VCCSA
1461	Trent	Stone	1963	Morris	Major	Sedan	SMM063	
1462	Greg	Shrubshall	1956	Vauhall	Velox	Sedan	UEL140	VOCASA
1463	Terry	Clifton	1962	Chrysler	Valiant S Series	Sedan	SXH843	
1464	Simon	Jaensch	1971	Holden	Torana	Coupe	RXR522	MVMC
1465	Darrad	Mclean	1929	Dodge	DA	Tourer	S457CCA	GVVVCV
1466	Nick	Maloney	1961	Holden	EK Special	Sedan	REK138	SMASA
1467	Peter	Viney	1928	Willys	Whippet	Utility	S852ATP	
1468	Greg	Donaldson	1946	MG	TC	Roadster	75819H	CCCT
1469	Tyson	Clark	1983	DeLorean	DMC12	Coupe	FUTURE	DLCUK
1470	Michael	Dendekker	1977	Ducati	900 SS	Sport	SS77	DOCSA
1471	Graham	Modra	1975	Ford	Fairlane	Sedan	SZG302	SCC
1472	Scott	Stevenson	1965	Ford	Mustang	Coupe	S659CUO	SMASA
1473	Jock	Gordon	1967	Austin	FG series	Bus	XGO396	
1474	Chris	Bennett	1968	MG	B	Roadster	HERMG2	RVCC
1475	Chris	Bennett	1976	Daimler	Double Six	Sedan	DOUBL6	RVCC
1476	Nick	Lizzi	1965	Chevrolet	Impala	Coupe	S780CHI	
1477	Julianne	Hein	1944	Willys	Jeep	Sedan - Touring	SYZ281	TBAC
1478	Peter	Magarey	1927	Chevrolet	Capitol	Truck - Tray Top	S387AUD	RVCC
1479	Peter	Magarey	1926	Hupmobile	A	Tourer	WEF140	RVCC
1480	Robert	Brand	1968	Austin	1800 Mk II	Sedan	RBB970	NARC
1481	David	Screaton	1987	Bentley	Mulsanne	Saloon	1674H	
1482	Matt	Hooper	1970	Land Rover	109 Series 2a	Wagon	ELR109	
1483	National Motor Museum		1962	Ford	Anglia	Sedan	VPP408	
1484	National Motor Museum		1960	Dodge	Phoenix	Sedan	157242	
1485	National Motor Museum		1959	Chrysler	Royal AP2	Sedan	DLU816	
1486	National Motor Museum		1926	Chrysler	60	Tourer	CH1926	
1487	Jonathan	White	1959	Wolseley	1500	Sedan	RWI959	MRSA
1488	John	Kither	1925	Essex	Super Six	Tourer	VHX999	
RAA1	RAA		1953	Austin	A40	Panel Van	VPE049	
RAA2	RAA		1955	Morris	Minor	Panel Van	RAA062	
RAA3	RAA		1959	Ford	100E Thames	Panel Van	VPE048	

ENTRANT LIST

AWARD ENTRANTS



Concours d'Elegance



Preservation



Electric Conversion

Entry	First Name	Last Name	Year	Make	Model	Body Style	Registration	Club
RAA4	RAA		1981	Mitsubishi	L300	Panel Van	WEX746	
RAA5	RAA		1988	Mitsubishi	Colt	Hatchback	UUY733	
RAA6	RAA		2005	Toyota	HiAce	Panel Van	XGN653	
SAP1	SA Police Historical Society		1961	Chrysler	AP2 Royal (Highway Patrol)	Sedan	291133	CRCA
SAP2	SA Police Historical Society		1962	BSA	A10	M/C Solo	YYS370	CRCA
SAP3	SA Police Historical Society		1971	BSA	A65 T	M/C Solo	S82AST	CRCA
SAP4	SA Police Historical Society		1962	BSA	A65	M/C Solo	YYM621	SAPHS
W0147	Gary	Rizzolo	1968	Triumph	TR6 Trophy Sports	M/C Solo	6883H	CMCVIC
W0186	Jason	Ohalloran	1973	Dodge	AT4	Utility	RUN313	SMASA
W0512	Rex	Hall	1928	Chevrolet	AB	Tourer	6485	
W0643	Michael	Quinn	1965	Ford	Mustang	Convertible	ESKIMO	WVCCC
W0822	Steve	Amey	1985	Mitsubishi	Pajero	Wagon -Sports	UTF383	
W1142	Christopher	Webb	1953	Jaguar	XK120	Coupe - Drophead	JAG53	JCCVIC

CAR CLUB ABBREVIATION

Club Abbreviated	Club	Club Abbreviated	Club
48&FJHOCNSW	48&FJ Holden Owners Club NSW Inc.	CLCA	Cadillac LaSalle Club Aust. SA
48-FJHCSA	48-FJ Holden Club SA	CACMC	Canberra Antique & Classic Motor Club Inc.
55,56,57SA	55,56,57 Chev Club SA	CapriCC	Capri Car Club Inc. VIC
AAAC	Adelaide Antique Automobile Club Inc.	CCLVDC	Central Coast Leagues Vintage Drivers Club
AdelCC	Adelaide Car Club	CWCC	Central West Car Club
ACC	Adelaide Cruisin' Classics Inc.	CPA	Chevrolet Performance Assoc. SA
ADC	Adelaide Datsun Club	CCCSA	Chrysler Car Club SA
AHMRC	Adelaide Hills Motor Restorers Club Inc.	CRCASA	Chrysler Restorers Club Aust. SA Inc.
AHR	Adelaide Hot Rodders	CRCAVIC	Chrysler Restorers Club Aust. VIC Inc.
AROCA	Alfa Romeo Owners' Club Aust. SA	CHACA	Classic & Historic Automobile Club Aust.
AROCAVIC	Alfa Romeo Owners' Club Aust. VIC	CMCC	Classic & Muscle Car Club SA Inc.
ABCCC	All British Classics Car Club	CCitCCVIC	Classic Citroën Car Club VIC
AMHCC	All Makes Historic Car Club	CMCVIC	Classic Motorcycle Club VIC Inc.
AMCRCA	AMC Rambler Club Aus. SA	COMCC	Classic Owners Motorcycle Club Inc. SA
ACCAW	Antique Car Club Albury Wodonga	CRC	Classic Racer Club Inc.
AMC	Ararat Motorcycle Club	CAF	Club Automobile Francais SA
ASCCA	Armstrong Siddeley Car Club Aust.	CitCSA	Club Citroën SA Inc.
AMOC	Aston Martin Owners Club Inc. SA	CNC	Coffee N Chrome Inc.
AMOCVIC	Aston Martin Owners Club Inc. VIC	CoLCCC	Colac Collectable Car Club
AtujMCC	Atujara Motorcycle Club	CCHE	Commodore & Classic Holden Enthusiasts
A7CSA	Austin 7 Club Inc. SA	CCCT	Cool Country Classics Trentham Inc.
AA40CC	Austin A40 Car Club of Aust. Inc. SA	CMRC	Coorong Mechanical Restoration Club
AHOC	Austin Healey Owners Club SA Inc.	CCCCSA	Cortina Capri Car Club SA Inc.
AHSDC	Austin Healey Sprite Drivers' Club Inc.	CCSA	Corvette Club SA Inc.
AMCCSA	Australian Muscle Car Club SA Inc.	CAVC	Cowra Antique Vehicle Club Inc.
ASRFSA	Australian Street Rod Federation SA	DSOANSW	Datsun Sports Owners Assoc. NSW
ACCMB	Auto Collectors Club Murray Bridge	DLCUK	DeLorean Club UK
BDEHCC	Ballarat & District Early Holden Car Club	DRRCCC	Desert Rats Rod & Custom Car Club Inc.
BVCMCC	Barossa Valley Classic Motorcycle Club Inc.	DOCSA	Ducati Owners Club SA
BVFC	Barossa Valley Ford Club Inc.	EFV8CNSW	Early Ford V8 Club NSW
BVGMOC	Barossa Valley General Motors Owners Club	EFV8C	Early Ford V8 Club SA
BVHVC	Barossa Valley Historical Vehicle Club	EHHC	EH Holden Club SA Inc.
BHMCC	Bendigo Historic Motorcycle Club Inc.	FCCSA	Falcon Car Club SA Inc.
BDCSA	Bentley Drivers Club SA Inc.	FGTCSA	Falcon GT Club SA Inc.
BMWCCVIC	BMW Car Club VIC	FB-EKHCC	FB-EK Holden Car Club SA
BMWDCSA	BMW Drivers Club SA	FE-FCHCCSA	FE-FC Holden Car Club SA Inc.
BVRC	Bordertown Vehicle Restorers Club Inc.	FCSA	Ferrari Club SA
BOCA	Bristol Owners Club Aust.	FLCCSA	FIAT-Lancia Car Club SA
BSAMOCSA	BSA Motorcycle Owners Assoc. Inc	F8-10SVC	Ford 8+10 Sidevalve Club Inc.
BSAOA	BSA Owners Assoc. SA Inc.	FCCA	Ford Coupe Club of Australia
BCCA VIC	Buick Car Club Aust. Inc. VIC	FF100CA	Ford F100 Club Aust. Inc.
BPASA	Bus Preservation Assoc. SA	FOCCSA	Ford Owners Car Club SA Inc.
CCASAR	Cadillac Club Aust. SA Region Inc.	FX-HZHCC	FX-HZ Holden Car Club SA Inc.

Club Abbreviated	Club	Club Abbreviated	Club
GVVCV	Gawler Veteran Vintage & Classic Vehicle Club Inc.	MidMCC	Mid Murray Car Club Inc.
GFX-FJCSA	Generals FX-FJ Club SA Inc.	MVMC	Milang Vintage Machinery Club Inc.
GHMC	Griffith Historic Motor Club Inc.	MMCC	Mildura Muscle Car Club
GRM	Gunnedah Rural Museum	MVVC	Mildura Vintage Vehicles Club Inc.
HDVVDC	Hamilton & District Veteran Vintage Classic Drivers Club	MVPSSA	Military Vehicle Preservation Society SA Inc.
HD-HRHCC	HD-HR Holden Car Club SA	MiniCSA	Mini Club SA
HillCCSA	Hillman Car Club SA Inc.	MK	Mini Kroozers
HCVCA	Historic Commercial Vehicle Club Aust. Inc. SA	MAFCSA	Model A Ford Club SA Inc.
HMCCQLD	Historic Motor Cycle Club QLD	MTFCA	Model T Ford Club Aust. Inc. SA
HMVCSA	Historic Motor Vehicles Club Inc. SA	MTFCAVIC	Model T Ford Club Aust. Inc. VIC
HCMVC	Historic Motor Vehicles Club Victor Harbor	ModMCCSA	Modified Mini Car Club SA
HBCC	Hobsons Bay Mens Shed Motoring & Engineering Group	MCCSA	Monaro Car Club SA Inc.
HOC	Holden Owners Club	MCVIC	Monaro Club VIC
HTCSA	Holden Torana Club SA Inc.	MCSA	Morris Car Club SA Inc.
HonCC	Honda Car Club SA Inc.	MMCCSA	Morris Minor Car Club SA Inc.
HBSA	Hot Bricks SA	MRNSW	Morris Register NSW
HCCSA	Humber Car Club SA Inc.	MRSA	Morris Register SA
IMCC	Italian Made Cars Club	MRVIC	Morris Register VIC
JCCVIC	Jaguar Car Club VIC	MVECNT	Motor Vehicle Enthusiasts Club NT
JCCC	Jaguar Classic Car Club Inc.	MtGVVCC	Mount Gambier Veteran & Vintage Car Club
JDCSA	Jaguar Drivers Club SA	MHM	Murray Heritage Motorists
JenCCA	Jensen Car Club Aust.	MOC	Mustang Owners Club SA Inc.
JMCCA	Juventus Motorcycle Club Adel.	MOTM	Mustangs on the Move
LCA	Lambretta Club Aust. Inc.	NHVC	Naracoorte Historic Vehicle Club Inc.
LRRSA	Land Rover Register SA Inc.	NCCA	National Cadillac Club Aust. SA
PLAC	Lincoln Auto Club Inc.	NMVM	National Military Vehicle Museum
LMVEMC	Lower Murray Vintage Engine & Machinery Club	NDCC	Nissan Datsun Car Club SA
MRDMC	Macedon Ranges & District Motor Club Inc.	NARC	Northern Automotive Restoration Club SA Inc.
MAPS	Maitland Auto Preservation Society Inc.	NDMA	Northern District Motorsport Assoc.
MVA	Majestic Vanners Australia	NMCC	Norton Motorcycle Club SA Inc.
MD	Mallee Drifters	OCA	Oldsmobile Club Aust. Inc.
MCCC	Mannum Classic Car Club	PACA	Packard Automobile Club Aust. Inc.
MBCSA	Mercedes-Benz Club SA Inc.	PUMPS	Peterborough United Machinery Preservation Society
MBMRCSA	Mercedes-Benz Motorsport & Restorers Club SA	PCC	Peugeot Car Club SA Inc.
MGCCCast	MG Car Club Castlemaine Register	PADARC	Pirie & Districts Automotive Restorers Club Inc.
MGCCGel	MG Car Club Geelong Inc.	PMEA	Pittwater Motor Enthusiasts Assoc.
MGCCSA	MG Car Club SA	PontCC	Pontiac Car Club SA
MGCCSyd	MG Car Club Sydney	PCCSA	Porsche Car Club SA Inc.
MGCCVIC	MG Car Club VIC	PAVRC	Port Augusta Vehicle Restorers Club Inc.
		PVCCTAS	Post Vintage Car Club TAS Inc.

CAR CLUB ABBREVIATION

Club Abbreviated	Club
PSGTR	Prince Skyline GT Register
R&SSVCC	R & S Series Valiant Car Club SA Inc.
RR&DCSA	Range Rover & Discovery Club SA
RMCSA	Riley Motor Club SA Inc.
RHR&C	Riverland Hot Rods & Classics
RVCCC	Riverland Vintage & Classic Car Club
RCC	Roadrunner Car Club Inc.
RROCA	Rolls-Royce Owners' Club Aust. SA Inc.
RCCSA	Rover Car Club SA Inc.
RSOCSA	RS Owners Club SA Inc.
SAMC	SA Moke Club Inc.
SAPHS	SA Police Historical Society
SICC	Scuderia Italian Car Club
SCHMC	Silver City Historic Motoring Club Inc.
SingCCSA	Singer Car Club SA
SESM	South East Street Machines Inc.
SEAC	South Eastern Automobile Club
SDCC	Southern District Car Club
SEFX-FJCC	Southern Early FX-FJ Car Club
SPC&HCC	Southern Peninsula Classic & Historic Car Club
SPV&MRC	Southern Ports Vehicle & Motor Restorers Club
SCC	Sporting Car Club SA Inc.
SCDSA	Sports Car Drivers SA
SpriteCSA	Sprite Club SA
StagOCSA	Stag Owners Club Aust. SA
SACC	Strathalbyn Auto Collectors Club Inc.
SMASA	Street Machine Assoc. SA
StuCCSA	Studebaker Car Club Aust. SA Inc.
SunCC	Sunbeam Car Club SA
SunOCSA	Sunbeam Car Owners Club SA
SCACC	Sunshine Coast Antique Car Club
SHVCVC	Swan Hill Vintage & Classic Vehicle Club Inc.
TBAC	Tailem Bend Auto Club
TMC	Torana Motorsport Club SA
TOYOC	Toyota Owners Club SA
TRR	TR Register Aust. Inc
TSOASA	Triumph Sports Owners Assoc. SA
UC	Ulysses Club
VOCANSW	Vauxhall Owners Club Aust. NSW
VOCASA	Vauxhall Owners Club Aust. SA
VMCC	Velocette Motorcycle Club

Club Abbreviated	Club
VVCAA	Veteran & Vintage Chevrolet Assoc. of Aust.
VVCAASA	Veteran & Vintage Chevrolet Automobile Assoc. SA
VVMCCSA	Veteran & Vintage Motorcycle Club SA
VetCCQLD	Veteran Car Club QLD Inc.
VetCCSA	Veteran Car Club SA Inc.
VCCWA	Veteran Car Club WA Inc.
VRV	Vincent Riders VIC
VDC	Vintage Drivers Club
VJMC	Vintage Japanese Motorcycle Club
VSCCSA	Vintage Sports Car Club SA Inc.
VECSA	Volks Enthusiasts Club SA
VWCSA	Volkswagen Club SA
VCCSA	Volvo Car Club SA
VCCVIC	Volvo Car Club Vic
WACC	Walkerville All Cars Club
WRNRCC	Wanderers Rock & Roll Car Club
WVCG	Wartime Vehicle Conservation Group
WestDHVC	Western Districts Historic Vehicle Club
WestVHCC	Western VIC Holden Car Club
WVCCC	Whyalla Vintage & Classic Car Club
WMHVS	Wimmera Mallee Historical Vehicle Society
WCCV	Wolseley Car Club VIC
VPVMC	Yorke Peninsula Vintage Motorcycle Club
ZZOC	Zephyr & Zodiac Owners Club SA

NATIONAL MOTOR MUSEUM

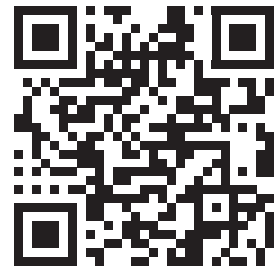
EXPLORE

HISTORY
TRUST
OF SOUTH
AUSTRALIA

ENGAGE

LEARN

EDUCATION AT
HISTORY
TRUST
OF SOUTH
AUSTRALIA



EXPLORE ENGAGE LEARN EXPLORE ENGAGE LEARN EXPLORE ENGAGE LEARN



Government
of South Australia

HISTORY
TRUST
OF SOUTH
AUSTRALIA

NATIONAL
MOTOR
MUSEUM

VAILO
ADL500
ALL IN
23-26 NOV 2023

BUY NOW AT  **TICKETEK**





Watch different.



Life in the Past Lane

Celebrate 40 years of the Bay to Birdwood with the story of one of the world's great motoring events, enjoyed by owners of classic vehicles and those who line the route each year to see them.



Bay to Birdwood Stories

Jump in for the unique stories of six classic and historic vehicles, their histories and place in our culture, and the people who lovingly maintain them.

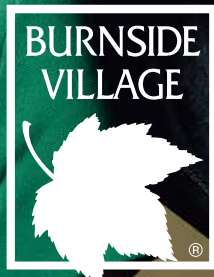


The Alternative Art School

Celebrate the 40-year story of the iconic Adelaide Central School of Art, from its boho beginnings to its status today as one of Australia's leading art schools.

ctvplus.org.au
Powered by community TV





WHERE FASHION LIVES

Home to South Australia's *only ZARA* plus a host of *over 80 celebrated* international & national brands.

PLUS FREE UNDERCOVER CAR PARKING & E-VEHICLE CHARGING.

FASHIONS ON THE FIELD PARTNER for the **BAY to BIRDWOOD**

BURNSIDEVILLAGE.COM.AU



Help us restore and protect nature

**DONATE OR
OFFSET YOUR
CARBON EMISSIONS**

Your support means we can grow more native seedlings, collect more seed for propagation and protect more of our incredible South Australian creatures and landscapes.



TreesForLife





SHARE THE PASSION



**“ NO ONE KNOWS YOUR
PASSION LIKE SHANNONS. ”**



Shannons Home and Comprehensive Car and Bike insurance is for motoring enthusiasts just like you, with features like:

- Choice of repairer
- Agreed value
- Multi-Vehicle & Multi-Policy discounts
- Limited Use & Club Plate cover
- Laid up cover
- One excess free windscreen claim per year
- Total loss salvage options
- Home & Contents Insurance including \$10,000 enthusiast items cover for your collectables & tools
- Towing & storage costs as a result of loss or damage
- Pay by the month premiums at no extra cost

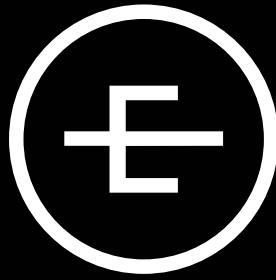
Call Shannons on **13 46 46** for a quote on your **special car, daily drive, bike or your home**, and speak with a genuine enthusiast.

Shannons Pty Limited ABN 91 099 692 636 is an authorised representative of AAI Limited ABN 48 005 297 807, the product issuer. Some benefits only apply to comprehensive vehicle cover. Shannons has not taken account of your objectives, financial situation or needs. Read the Product Disclosure Statement before buying this insurance, available at shannons.com.au. The Target Market Determination is also available. Terms, conditions, limits and exclusions apply. The type of cover must be specified on your certificate of insurance. If you do not use your vehicle in accordance with the vehicle usage shown on your policy certificate you may not be covered in the event of a claim. Discounts do not apply to the optional Shannons Roadside Assist or CTP.



Scan to find out more

**INSURANCE FOR MOTORING ENTHUSIASTS
CALL 13 46 46 FOR A QUOTE | SHANNONS.COM.AU**



E-VALENCE™

RESPONSIBLE SCIENCE



The E-Valence brand by Scientific Correction will be launched later this year. Two years in development, this preeminent range of car care products contains no silicone, solvents or volatile organic compounds (VOC's) making them safer to use and they are all 100% biodegradable. So, you can keep your car and the environment as clean as they should be.

**FOR MORE INFORMATION PLEASE CALL 1300 845 498
OR EMAIL INFO@SCIENTIFICCORRECTION.COM**



WATER BASED



SILICON FREE



SOLVENT FREE



VOC FREE



ANTI-FOG



ANTI-MICROBIAL



BIO-DEGRADABLE



ECO-FRIENDLY

West Beach Parks

holiday · sport · adventure



Come to life.

Only 10 minutes from Adelaide's CBD you will find South Australia's favourite Holiday Park and Retreat with the largest range of sporting fields, two public golf courses, a marina and exciting new adventure activities.

Military Road, West Beach SA
westbeachparks.com.au



**STUCKEY
TYRE
SERVICE**



CLASSIC, VINTAGE & VETERAN NOW AVAILABLE



For over 50 years Stuckey Tyre Service has provided quality tyres and service for classic and collectible cars. In addition to carrying fresh stock from these major manufacturers, our worldwide sources can deliver hard to find tyres for correct and concourse applications.



STUCKEY TYRE SERVICE

828 Sydney Rd, Brunswick VIC, 3056

1300 854 324 www.stuckey.com.au

✉ classic@stuckey.com.au





ALL BRITISH DAY 2024

ECHUNGA RECREATION GROUNDS

Sunday 3rd March 2024

ENTRANTS: The website opens for entries to the 2024 event on 30th September 2023. We will be celebrating the MG marque, hosting our International Motorcycle Muster and also celebrating 90 years of The Sporting Car Club of SA.

SPECTATORS: See South Australia's biggest all British vehicle show with hundreds of historic and classic cars, trucks, commercials and motor cycles displayed on two ovals. There are general interest and automotive stalls and many activities for children.

Adults \$10

Children 6-18 years \$5

Family \$25

Ovals open from 9am for entrants, 10.30am for public admission and the event closes at 3pm.

FURTHER DETAILS: www.allbritishday.com

FINAL WORDS THANK YOU

The History Trust of South Australia would like to thank all sponsors, partners, suppliers, and organisations for making this event one of the world's great historic motoring events. Special thanks to the Bay to Birdwood Advisory Committee which provides strategic advice on the future directions of the Bay to Birdwood and to all volunteers who kindly donate their time, enthusiasm and energy.

EVENT PARTNERS



MEDIA PARTNER



CHARITY PARTNER



SUPPORTING ORGANISATIONS

Adelaide Hills Council
Birdwood CFS
City of Adelaide
City of Charles Sturt
City of Holdfast Bay
City of Tea Tree Gully
City of West Torrens

RAA Road Service
SES Prospect and Enfield
South Australian Police
Tea Tree Gully's Men's Shed
Traffic Management Centre, DPTI
St John Ambulance (SA) Service
Women for Wheels

THE BAY TO BIRDWOOD ADVISORY COMMITTEE

Michael Neale – Chair
Dane Wilden – Executive Officer
Mike Beresford
Tracey Greaves
Daryl Meek

Lucinda Osborne
Tony Simmons
John Hancock
Hamish McDonald





SCAN CODE

GIVING THE PAST A FUTURE NOW!

VISIT OUR MUSEUMS [TODAY](#) ↙





Travel. Our Way.

Fleurieu Peninsula

SOUTHAUSTRALIA.COM